



MUSEUM <sup>of</sup>  
VENTURA  
COUNTY

YEARS IN REVIEW  
2022-2023

CURIOSITY • COMPASSION • CONNECTION

## Message from The Barbara Barnard Smith Executive Director, Elena Brokaw



Over a century ago, the Museum of Ventura County was founded: partly as an homage to the people and cultures who had shaped the community as it stood in 1913, and partially as a cabinet of curiosities—a collection of souvenirs and curios meant to evoke awe.

The Museum of Ventura County has changed a lot since its inception. While we still aim to inspire wonder and curiosity in everyone we reach, our institution exists today in order to change the world. And yes, we know that sounds lofty. But we are certain that, with your help, we can nurture big changes.

How do we plan on achieving our ambitious goals? Everything starts with our belief that by bringing our collective history to light, we will spark curiosity, instill compassion, and foster connection. With every interaction we facilitate and every person we reach, we see how these elements of individual expression can lead to positive, community-wide change.

To catalyze emotions into actions, we aim to illustrate that the world, as we know it, is not fixed. It has changed before, and it will change again. We want our visitors to leave with a sense of agency—an awareness that the future is not just something that happens to them. In everything we do, we create and shape the future.

The Museum of Ventura County hopes you will invest in our mission and join us in creating a more connected future. As we invite you to embark on this journey with us, we ask not only for your patronage but for your partnership.

So, we urge you to delve deeper into our digital offerings, to explore our exhibitions, and to consider how you can contribute to our shared vision of a brighter tomorrow. Whether through a donation, a membership, or simply by spreading the word, your support is instrumental in helping us realize our mission.

Together, let's write the next chapter in the story of the Museum of Ventura County—a chapter filled with curiosity, compassion, and connection.

With gratitude,

A handwritten signature in blue ink that reads "Elena Brokaw". The signature is fluid and cursive, with a large initial "E".

Elena Brokaw  
The Barbara Barnard Smith Executive Director

**Our Vision:** *Inspiring vibrant communities by connecting the past, present, and future.*

**Our Mission:** *The Museum of Ventura County, through its collections, exhibits, educational programs and publications, celebrates the history, art, and culture of Ventura County and the Channel Islands.*



William Kearney,  
Chair



Dr. Richard Rush,  
Vice Chair



Mike Sedell,  
Treasurer



Jessica Arciniega,  
Secretary



Al Lowe



Betsy Chess



David Fukutomi



Dianne McKay



Gabriella  
Navarro-Busch



Jim Scanlon



Julie  
Tumamait-Stenslie



Leslie Leavens



Sarah  
McCarthy-Garcia



Dr. Sevet Johnson



The Museum of Ventura County first opened its doors in 1913 as the Ventura Pioneer Museum. For its first decade, it shared one room with the Chamber of Commerce and Farm Bureau in what was then the County Courthouse. The Museum has come a long way in the last century, and now has multiple sites:



## **THE MUSEUM OF VENTURA COUNTY IN DOWNTOWN VENTURA**

The flagship of the Museum facilities, the downtown Ventura campus has presented programs, exhibitions, and educational activities since its opening in 1977. Situated in the heart of downtown's historic district, the Museum has 3,000 square feet of gallery space, a research library, an events pavilion, an open-air courtyard, plaza, and gardens. These spaces work together to spark curiosity and encourage learning about Ventura County and the region.

## **THE RESEARCH LIBRARY AT THE MUSEUM OF VENTURA COUNTY**

MVC's Research Library houses a vast collection of photographs, maps, oral histories, family papers, and other archival records that together, tell the story of our community. The Research Library is free and open to the public by appointment—its online archive allows researchers access to digitized materials from anywhere in the world.

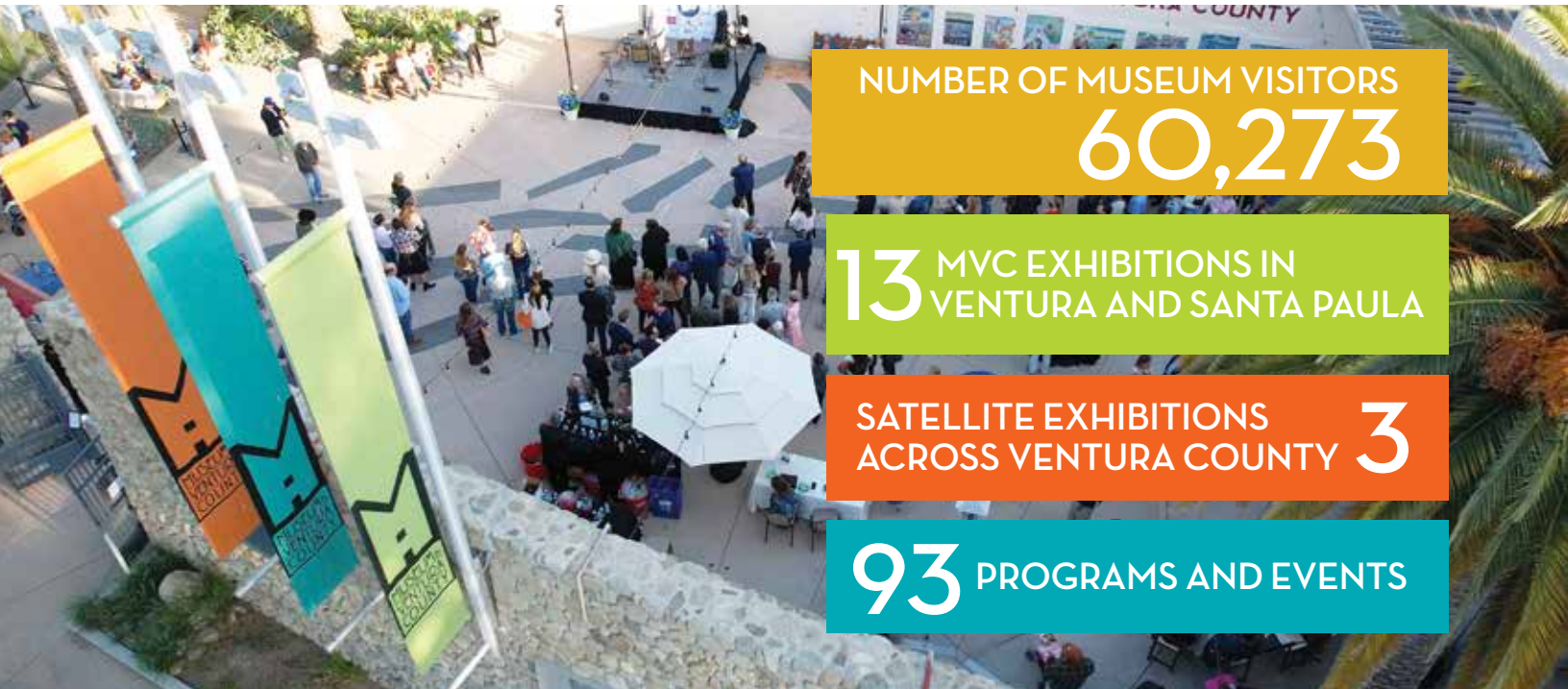
## **THE AGRICULTURE MUSEUM IN SANTA PAULA**

Located in the historic Mill Building in downtown Santa Paula, the Agriculture Museum is a compelling tribute to the region's farming and ranching history, exploring the legacy of the farmers and innovators who shaped the local landscape. This campus engages visitors with its rotating community-focused exhibitions, broad collection of farming equipment, raised garden beds, a native plant garden, a live observation beehive, and interactive, agriculture-focused activities for children.

## **MVC'S ONLINE CAMPUS - AVAILABLE WORLDWIDE**

Founded in 2020, the expanded online presence through MVC's website and social media platforms acts as the Museum's newest "campus." With virtual tours and exhibitions, lectures and talks hosted digitally, history blog posts, educational resources, digital jigsaw puzzles, and more, the Museum's online offerings bring our community together to celebrate art, history, and culture from anywhere across the world.

# AT A GLANCE: 2022-2023 HIGHLIGHTS



NUMBER OF MUSEUM VISITORS  
**60,273**

**13** MVC EXHIBITIONS IN  
VENTURA AND SANTA PAULA

SATELLITE EXHIBITIONS  
ACROSS VENTURA COUNTY **3**

**93** PROGRAMS AND EVENTS

## EXHIBITIONS UNVEILED IN 2022-2023

**Always Keep Creating:** *The Resiliency of Carol Rosenak*

MVC

**Chromatic:** *The Museum in Six Colors*

MVC

**All That Glitters is Not Gold**

MVC

**Behind the Curtain:** *An Insider's Look at The George Stuart Historical Figures®*

MVC

**Going Wild**

MVC & ONLINE

**Pollination Investigation –** *The Essential Role of Pollinators in the Natural World*

AG

**Finding the Light:** *Works from MVC's Permanent Collection*

MVC

**Proximity to Water:** *Works from MVC's Permanent Collection*

MVC

**Spin Cycle:** *Unfolding the Science of Laundry*

MVC

**Murder of Tom More:** *A True Crime Story*

MVC

**Nosferatu:** *A George Stuart Historical Figures® Exhibition*

MVC

**Winter:** *A George Stuart Historical Figures® Exhibition*

MVC

**Ventura County,** *The Place We Call Home*

AG & SATELLITE LOCATIONS



RESEARCH  
REQUESTS

1,513

PHOTOS  
DIGITIZED

2,387

CUBIC FEET  
OF RESEARCH  
MATERIALS  
PROCESSED

600

DIGITAL  
JIGSAW  
PUZZLES

284

IN-PERSON RE-  
SEARCH LIBRARY  
APPOINTMENTS

439

NUMBER OF MUSEUM MEMBERS 1,043



ATTENDANCE OF  
SCHOOL TOURS

5,111

NUMBER OF SCHOOL  
DISTRICTS SERVED

12

NUMBER OF K-12  
SCHOOLS SERVED

44

NUMBER OF INTERNS

18

NUMBER OF  
VOLUNTEERS

78

JANUARY	MVC Insider: Season 3 Workshop: Legal Issues for Artists: Protecting Your Works Ivor Davis: Up Close and Personal with Harry Benson	ONLINE MVC MVC
FEBRUARY	Family Fun Day: Celebrating Black History Month Bilingual Storytime with Ventura County Mobile Library	AG MVC
MARCH	Nowruz: Persian New Year Celebration Ivor Davis: Up Close and Personal with Dianne Lake Documentary Screening: <i>Margaret Garcia: An Intimate Portrait</i> Bilingual Storytime with Ventura County Mobile Library	MVC MVC MVC
APRIL	Documentary Screening: <i>Mariposas del Campo</i> Monoprint Workshop with Margaret Garcia and Bonnie Lambert Documentary Screening and Wildfire Awareness: <i>Not If, But When</i> Ventura County Flower and Weed Show and Exhibit Ivor Davis: Up Close and Personal with Bob Eubanks Author Talk: <i>El Oz</i> by David Damian Figueroa, with Dolores Huerta	MVC MVC MVC AG MVC AG
MAY	Poetry Reading: Poesia Para la Gente <i>Save the Pollinators: A Youth-Led Environmental Restoration Project</i>	MVC AG
JUNE	Ivor Davis: Up Close and Personal with Steve Binder <i>All That Glitters Is Not Gold, Always Keep Creating,</i> and <i>Chromatic</i> Exhibition Openings Bilingual Storytime with Ventura County Mobile Library	MVC MVC MVC





JULY	Life Drawing Sessions with Cathy Barroca and Barbara Brown Play-Well TEKnologies LEGO Summer Camp	MVC MVC
AUGUST	Bilingual Storytime with Ventura County Mobile Library Play-Well TEKnologies LEGO Summer Camp National Honey Bee Day Event Book Launch: <i>Arty's Amazing Accordion</i> by Amada Perez <i>Going Wild</i> Exhibition Opening Reception	MVC AG AG MVC MVC
SEPTEMBER	Bilingual Storytime with Ventura County Mobile Library 8th Annual Labor Day Vintage Tractor Fair	MVC AG
OCTOBER	Oaktober: A Celebration of Oaks and Native Plants with Ventura Land Trust Local History Happy Hour with John Krist California Native Plant Society's Plant Sale U.C. Master Gardeners: Winter Vegetable Gardening Workshop <i>Dia de Los Muertos</i> Altar-Building Session <i>Dia de Los Muertos</i> Celebration Ivor Davis: Up Close and Personal with Joe Sohm	MVC AG AG AG AG AG MVC
NOVEMBER	27th Annual De Colores Music & Art Festival Ivor Davis: Up Close and Person with David Leaf	MVC MVC
DECEMBER	Las Posadas Procession with De Colores Multicultural Folk Art Holiday Sip n' Shop at MVC's Boutique	AG MVC

### 2022 PROGRAMS AND EVENTS FUNDED IN PART BY:

- Ventura County
- City of San Buenaventura
- John Hammer Family
- Harriet H. Samuelsson Foundation
- Charles D. and Mary A. Bauer Foundation
- National Historical Publications and Records Commission
- Heritage Fund at VCCF
- Chrisman Estate Company
- EJ Harrison and Sons
- Farm Credit West
- Pierpont Racquet Club
- Finch Family Foundation
- Hoffman/Haley Marina Village
- Busch Family Foundation

# BRIDGE BUILDER *Luncheon 2022*

*Honoring  
The Extended Families of Isabel Winemiller  
and William Dewey Hobson*

In 1854, William Dewey Hobson and his wife Isabel Winemiller Hobson moved to what would become the city of San Buenaventura, and changed the future of Ventura County forever. Almost two centuries later, in July 2022, the Museum celebrated the accomplishments of seven generations of the Hobson family. At a special gathering at the home of Julia Campbell Namba in Hobson Heights, 200 Museum supporters gathered to dine, dance, and appreciate the achievements of this incredible family.



# OPENING OF THE ESTHER AND THOMAS WACHTELL FAMILY GALLERY

When Esther and Tom Wachtell moved to Ventura County in the 1990s, they quickly discovered the Museum of Ventura County. Esther in particular was impressed with the breadth and depth of the collection, and in the ensuing three decades has worked to ensure that the collection is protected and shared with the community. In recognition of the family's transformative endowment gift in 2022, the Museum officially opened the Wachtell Family Gallery with *Finding the Light*, the first of an ongoing series of exhibits of work from MVC's permanent collection.



JANUARY	Ventura Land Trust (VLT) Environmental Speaker Series: Marcus Erikson and Anna Cummings of 5 Gyres Institute <i>Finding the Light</i> Exhibition Opening Reception and Dedication of the Wachtell Family Gallery Publication of MVC Journal <i>Bootleggers, Rumrunners,</i> <i>and Blind-Piggers: Prohibition in Ventura County</i>	MVC MVC
FEBRUARY	Reading by California Poet Laureate Lee Herrick U.C. Master Gardener Open House with Dr. James Downer Book Talk: <i>Squatters, Scandals, and Surfing:</i> <i>A History of Rincon</i> by Stephen Bates and Vincent Burns Book Launch: <i>Coyote Rescues Hawk, A Chumash Story</i> by Alan Salazar and Mona Lewis	AG AG MVC MVC
MARCH	Summer Vegetables Gardening Workshop Nowruz: Persian New Year Celebration Ivor Davis: Up Close and Personal with Malcolm McDowell Playdate in the Children's Garden with Diane Ippel	AG MVC MVC MVC
APRIL	Book Launch: <i>Images of America: Fillmore</i> by Carino Monica Montoya VLT Environmental Speakers Series: Embracing Change through Ocean Exploration with Holly Lohuis The River Next Door: Come Meet Your Neighbor! Ventura County Plants to Know and Grow: An Earth Day Weekend Celebration Regenerative Agriculture Panel presented with Leap Lab: <i>Law and Disorder: An Evening with Michael Bradbury</i>	AG MVC AG AG AG MVC
MAY	Chumash Plant Knowledge: Presentation by Jam Timbrook, PhD Art in the Garden with Activities by 4H Workshop: Human Resources for Non-Profits Kids Drum Circle: Celebrating International Children's Day	MVC AG MVC MVC
JUNE	VLT Environmental Speaker Series: Microfibers in our Marine Life with Dr. Andrea Huvard Santa Paula's LGBTQ+ Youth Pride Celebration 150th Anniversary of Ventura County Kick-off Celebration (VC150) VC150 Memories (VC150) Voices of Ventura County (VC150)	MVC AG MVC ONLINE ONLINE
JULY	Doggie Days: Humane Society of Ventura County	AG
AUGUST	Pop-Up Celebration at Ventura County Fair (VC150) Feast or Flop Video Series (VC150) An Introduction to Obon: A Japanese Summer Festival National Honey Bee Day Event MVC Exhibition Spotlight: Ventura County Land Use Panel Discussion Playdate in the Children's Garden: Ventura Fish and Wildlife Office	VENTURA ONLINE AG AG MVC MVC



## SEPTEMBER

Pop-Up Celebration at Ragtime Revival (VC150)  
 Digital Jigsaw Puzzles (VC150)  
 ArtWalk at MVC  
 Pop-Up Celebration at Banana Fest (VC150)  
 The Santa Clara Valley Wellness Foundation Festival

SIMI VALLEY  
 ONLINE  
 MVC  
 PORT HUENEME

## OCTOBER

Family Fair: Mountains to Sea Jubilee (VC150)  
 Ventura County, *The Place We Call Home* Exhibition Opening (VC150)  
 Music Festival: Mountains to Sea Jubilee (VC150)  
 VLT Environmental Speaker Series: Oak Regeneration

AG  
 AG  
 SANTA PAULA  
 MVC

## NOVEMBER

State of the County Address and Reception (VC150)  
 Ventura County Farm Day with Students for Eco Education  
 and Agriculture  
 Pop-Up Celebration and Exhibition Opening (VC150)  
 Small Business Saturday

SIMI VALLEY  
 AG  
 THOUSAND OAKS  
 AG

## DECEMBER

Home for the Holidays  
 Holiday Sip n' Shop at MVC's Boutique

MVC  
 MVC

## 2023 PROGRAMS AND EVENTS FUNDED IN PART BY:

- Ventura County
- City of San Buenaventura
- John Hammer Family
- Farm Credit West
- Index Fresh
- TOLD Corporation
- Finch Family Foundation
- Ventura County Credit Union
- Hoffman/Haley Marina Village
- Paul and Anne Leavens Family Fund
- Schwemm Family Foundation
- Smith-Hobson Foundation Fund
- Gene Haas Foundation
- TOLD Foundation
- Williams-Corbett Foundation
- Charles D. and Mary A. Bauer Foundation
- Heritage Fund at VCCF



# 2023 JUNE - NOVEMBER

## THE 150TH ANNIVERSARY OF VENTURA COUNTY



2023 marked the 150th anniversary of the founding of Ventura County. With your support, we engaged the community in 150 days of celebration!



### CO-PRESENTING PARTNERS

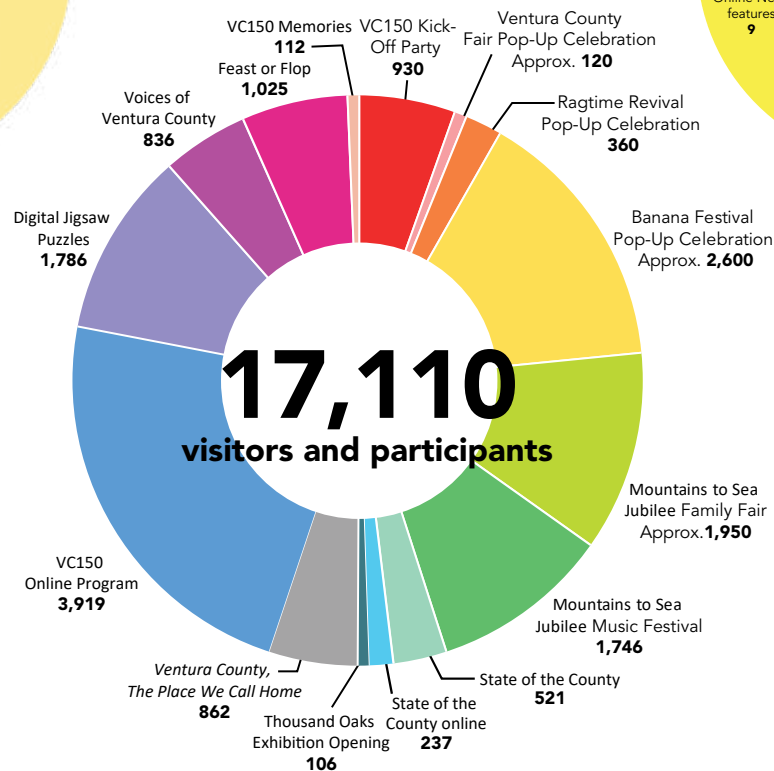
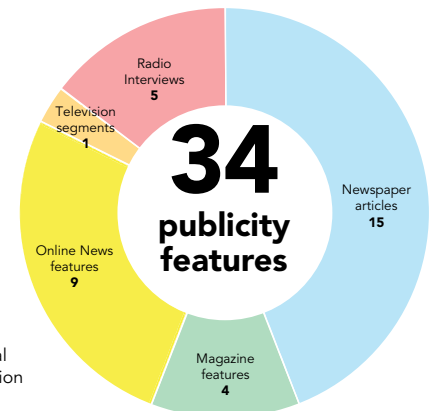


ECONOMIC  
DEVELOPMENT  
COLLABORATIVE

# CELEBRATING 150 YEARS OF VENTURA COUNTY



**150**  
days of celebration

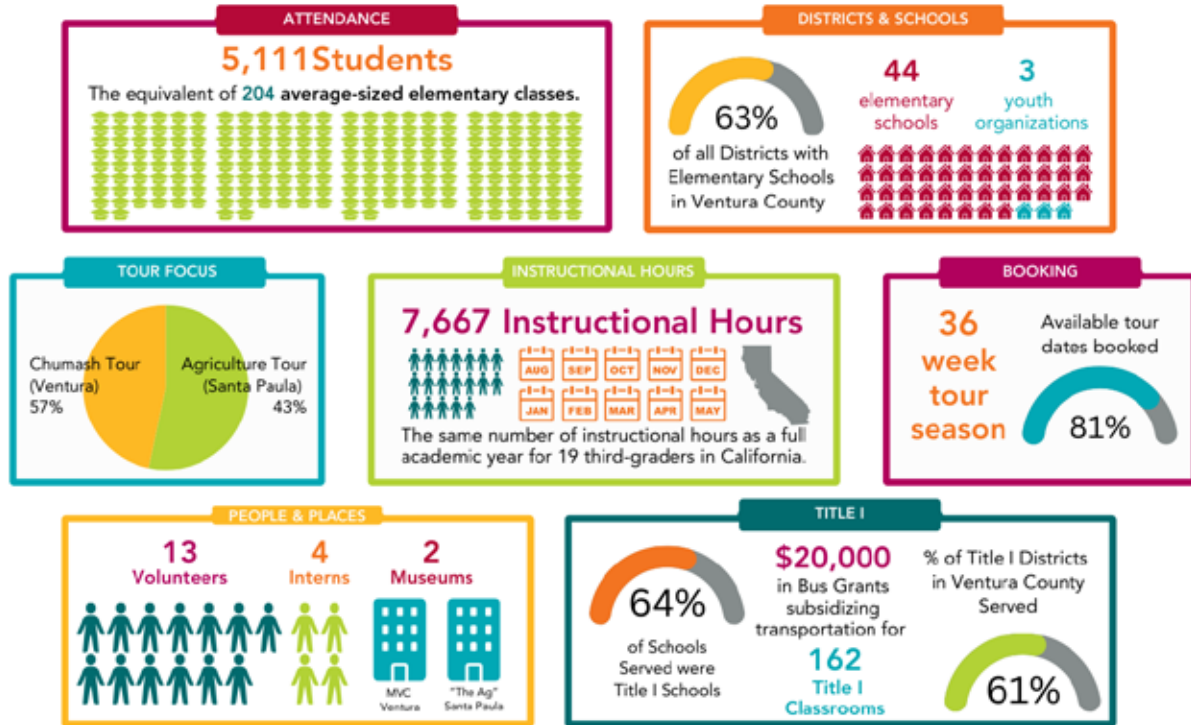


Funding for this series of programs and events provided in part by:



# MVC EDUCATION IMPACT REPORT

## 2022-2023 SCHOOL TOURS



2022 and 2023 were busy years for MVC's elementary school tour programs, booking 81% of all available tour dates and serving 5,111 students from 44 schools across our Ventura and Santa Paula campuses.



# BONITA C. MCFARLAND SCHOLARSHIP FOR THE VISUAL ARTS



2023 Bonita C. McFarland Scholarship awardees meet with MVC's Chief Curator Carlos Ortega and members of MVC's Fine Arts Committee at the Bonita C. McFarland Scholarship Awards Reception on June 7, 2023, at the Museum of Ventura County's downtown Ventura campus.

Through the **Bonita C. McFarland Scholarship for the Visual Arts**—initiated by the late Ms. Bonita C. McFarland's dedication to the arts—MVC recognized 12 remarkable emerging artists in Ventura County across the years 2022 and 2023. This scholarship, which splits \$10,000 per year between awardees, aims to celebrate and amplify the arts as a fundamental part of our local community.

## 2022-2023 SCHOLARSHIP PROGRAM IMPACTS

35 applications

10 finalists

2 honorable mentions

10 high schools reached

4 colleges reached

\$20,000 in scholarships awarded

All 5 Ventura County Supervisorial Districts served



Temari balls sculpture by Piper Snowber, 2023 finalist

### 2022 FINALISTS

Billie Bowman, *Ojai*; Emily Kirkland, *Moorpark*;  
Esmeralda Velasquez, *Ojai*; Grace Morton, *Ventura*;  
Quincy Unseth, *Camarillo*

### 2023 FINALISTS

Audrey Abbe, *Ventura*; Alex Lozano, *Simi Valley*;  
Piper Snowber, *Camarillo*; Anya Spiers, *Thousand Oaks*;  
Charlotte Scott, *Oak Park*

### HONORABLE MENTIONS

Danae Olivares, *Oxnard*;  
Elora Bacon, *Westlake Village/Oak Park*

# MEET MVC'S NEWEST TEAM MEMBERS

Discover the names and roles shaping your Museum's narrative. In 2022 and 2023, MVC continued to pay its interns a fair, livable wage and reached pre-pandemic levels of employment. Together, this passionate team works towards a more sustainable, equitable, and connected future.

## MVC EMPLOYED **18** SCHOOL-TERM INTERNS:

**Allison Phelps** (San Jose State University), Library and Archives Intern  
**Amihan Franada** (Ventura College), Education Intern  
**Carla Valdez** (California State University, Northridge), Library and Archives Intern  
**Cecilia Lopez** (California Lutheran University), Education Intern  
**Chase Woodard** (California State University Channel Islands), Marketing and Communications Intern  
**Danielle Tusi** (San Jose State University), Library and Archives Intern  
**Douglas Joys** (University of Denver), Library and Archives Intern  
**Isabel Cline** (University of California, Los Angeles), Library and Archives Intern  
**Jairo Rios Ponce** (California State University Channel Islands), Education Intern  
**Jennifer Dawes** (San Jose State University), Library and Archives Intern  
**Kelli Couse** (California State University Channel Islands), Library and Archives Intern  
**Peter Smilanick** (California State University Channel Islands), Library and Archives Intern  
**Rebecca Ritchie** (San Jose State University), Library and Archives Intern  
**Samuel Ponce** (California State University Channel Islands), Education Intern  
**Stephanie Zager** (University of California, Los Angeles), Library and Archives Intern  
**Susana Delgadillo** (University of Washington), Library and Archives Intern  
**Vincent Romero** (California State University Channel Islands), Library and Archives Intern  
**William MacNeil** (University of California, Los Angeles), Library and Archives Intern



## AND **12** NEW EMPLOYEES:

**Alex Bruzzese**, Human Resources Office Manager  
**Angie Brinkhoff**, Marketing and Communications Program Manager  
**Carlos Ortega**, Chief Curator  
**Heather Williams**, Development and Outreach Director  
**Karen Hernandez**, Finance and Operations Coordinator  
**Josh Ortiz**, Development Specialist  
**L.E. Brown**, Development Manager  
**Loribeth Gregory-Beck**, Senior Education and Engagement Manager  
**Michelle Hoover**, Visitor Experience Associate  
**Samuel Ponce**, Visitor Experience Associate  
**Thomas Blood**, Events and Facilities Associate  
**Violet Loza**, Visitor Experience Associate

# CELEBRATE MVC'S COMMUNITY COLLABORATORS

MVC proudly recognizes its dynamic collaborators and committed volunteers, whose impact on the community is immeasurable. Across 2022 and 2023, MVC remained dedicated to facilitating meaningful connections, championing diverse narratives, and creating lasting educational and cultural experiences for all.

## MVC COLLABORATED WITH **64** COMMUNITY PARTNERS:



Alan Salazar and Mona Lewis • ÁNIMO Theatre Company • Art Trek, Inc. • Arte & Cultura Collective of Santa Paula • Ballet Folklórico Bell Arts • Barbara Brown • Bell Arts Factory • Blanchard Community Library • Blue Ridge Honey • Breast-feeding Coalition of Ventura County • C.R.E.W. (Concerned Resource and Environmental Workers) • California Lutheran University • California Native Plant Society • California State University Channel Islands • Camarillo Ranch Foundation • Carina Monica Montoya • Cathy Day • Channel Islands Maritime Museum • City of Ventura • David Damian Figueroa • De Colores Multicultural Folk Art, Inc. • Diversity Collective Ventura County • Flamenco 805 • Focus on the Masters Arts Archive & Library • Harry Selvin Orchestra • hi stok'oy hil xus Chumash Cultural Group • Humane Society of Ventura County • Inlakech Cultural Arts Center/Lucha • Interfaith Council • Iposi Women Veteran and Two-Spirit Native Drum • Ivor Davis • John Krist • Margaret Garcia • Memorias Tejidas • Mike Bradbury • New West Symphony Association •

Niños del Maíz • Olivas Adobe Historical Interpreters (OAH) • Open Door Studio • Pedro Chavez • Play-Well LEGO • San Buenaventura Friends of the Library • Santa Clara River Conservancy • Santa Clarita Organization to Protect the Environment (SCOPE) • Santa Paula Bee Club • Santa Paula Chamber of Commerce • Santa Paula Concert Series at the Universalist Unitarian Church • Santa Paula Historical Society • Santa Paula Latino Town Hall • Santa Paula Theater Center • Simi Valley International City of Peace • Stephen Bates and Vincent Burns • Studio Channel Islands • The Laby Harmony Project of the New West Symphony • The Santa Paula Police Department • Togen Daiko • Topa Topa Flywheelers • University of California Division of Agriculture and Natural Resources & University of California Master Gardeners • VC Mobile Library • Ventura County Agriculture/Weights & Measures • Ventura County Community College District • Ventura Fish and Wildlife Office • Ventura Regional Fire Safe Council • Vita Art Center

## AND WORKED ALONGSIDE **97** VOLUNTEERS:

### DOCENTS AND VOLUNTEERS:

Alberta Word • Andrea Pfister • Andy Ludlum • Ann Huston • Barbara Dupree • Barbara Hilburn • Barbara Laubacher • Bruce Schoppe • Betsy Chess • Bob Delaney • Carole VanOrsdol • Carol Hardison • Cherie Brant • Christine Kovell • Clyde Hofflund • Craig Hodson • Danielle Bonnici • David Bayer • Gary Butler • Glenda Cardona • Ilse Lang • James Holden • James Moahan • Jane Blackman • Jean Hefter • Jeanne Hunt • John Brant • Joyce Cantrell • Joyce Schoppe • Judy Gilliard • Judy Hodson • Kathy Abbott-Mayer • Kathy Franklin • Kathy Ginsberg • Kathy Shearer • Kris Olson • Linda Hadlen • Linda Kimbrough • Linn Butler • Logan Hardison • Lynne Hofflund • Marilyn Hilton • Mark W. Capehart • Mary Stewart • Mary Volpe • Merle Oberg • Mimi Allin • Nancy Maxson • Phillip Allin • Robert Tovas • Roberta Cordell • Robin Lamar • Royce Hill • Russell Richardson • Sandra Sanders • Sandra Tovas • Shelly Footes • Vivian Nelson

### COMMITTEE MEMBERS:

Banks Pecht • Barbara Barraza-Ordonez • Bill Kearney • Caryn Bosson • Catherine De La Torre • Chuck Cohen • Cliff Rodrigues • David Fukutomi • Doreen Villanueva • Eric Boys • Frank Barajas • Gabriella Navarro-Busch • George Sandoval • Hector Guerrero • Jackie Bermudez • Jessica Arciniega • Jim Scanlon • John McConica • John Orr • Jorge Corralejo • Jose Alamillo • Joyce Chavez • Kate McLean • Lori Sanchez • Dr. Maria Munguia • Mike Sedell • Monica Frazier • Peter Zierhut • Ray Vargas • Dr. Richard Rush • Rick Castaniero • Roberto Vargas • Rose Fields • Sally Yount • Sue Chadwick • Tom Wolfe • Tomas Almaguer • Vanessa Acosta • Yenelli Law

# ENDOWMENT FUNDS

## CHRISTINA ALLISON FUND

Supports operational priorities as identified by the Board of Directors. Established by bequest 2019.

## LILA ATKISSON FUND

Supports the cataloguing, digitization, and preservation of the Library's visual print collection. Established 2021.

## BERRY RESEARCH LIBRARY FUND

Supports the acquisition, conservation, storage, display, and accessibility of historical library materials. Established 2006.

## FORUM OF THE ARTS ENDOWMENT FUND

Supports art installations and projects at both Museum campuses. Established 1990.

## BONITA C. MCFARLAND FUND

Supports the purchase and exhibit of fine art, promotes appreciation and awareness of art, and awards one or more scholarships annually to art students. Established 1990.

## KAREN AND TOM PECHT FAMILY FUND

Supports operational priorities, as identified by the Board. Established 2018.

## MIRIAM SCHWAB FUND

Supports operational priorities as identified by the Board. Established by bequest 2018.

## FRED W. SMITH GALLERY FUND

Supports the purchase, maintenance, and restoration of the Museum's collection of George Stuart Historical Figures®, and/or repairs and improvements to the Fred W. Smith Gallery. Established 1992 by Barbara Barnard Smith and Helen M. Smith.

## SMITH-HOBSON FAMILY COLLECTIONS MANAGER FUND

Supports the Collections Manager position. Established 2019 by Jeff Smith, Marilyn Cassidy, Barbara Stupay, and Greg Smith.

## THE BARBARA BARNARD SMITH MUSEUM OF VENTURA COUNTY EXECUTIVE DIRECTOR FUND

Supports the Museum's long-term stability by providing funding for its Executive Director position. Established 2017.

## HARDISON KIMBALL THILLE FAMILY FUND

Supports operational priorities as identified by the Board. Established 2017.

## TOM AND ESTHER WACHTELL FAMILY FUND

Supports the exhibit of works from the permanent collection. Established 2018.

## HELEN YUNKER COLLECTIONS PRESERVATION FUND

Supports the Museum Research Library and Collections Department, and exhibits materials from these areas. Established by bequest 2018.

## MUSEUM OF VENTURA COUNTY ENDOWMENT FUND

Supports Museum operations. Established 2001.

## MUSEUM OF VENTURA COUNTY—AGRICULTURE MUSEUM ENDOWMENT FUND

Supports the Agriculture Museum. Established 2019.

## ENDOWMENT FUND CONTRIBUTORS

We thank the many generous donors who have made contributions to the Museum of Ventura County Endowment Fund:

Arthur Bliss and Toy White  
Mr. & Mrs. Robert F. Brown  
*In memory of Bob and Betty Pfeiler*  
Nancy Gallagher  
Nancy and Spencer Garrett  
Index Fresh, Inc.  
William and Elise Kearney  
James Lloyd-Butler  
*In memory of Cynthia M. Lloyd-Butler*  
Patrick Lloyd-Butler

Martin V. and Martha K. Smith Foundation  
Brienne McGrath  
Barbara S. Meister  
*In memory of Larry Meister*  
Mr. & Mrs. John J. Menne  
John and Stephanie Orr  
Andrea Pfister  
*In memory of Edith Hobson Hoffman*  
Allan M. Pinkerton Family  
Janice Petit Willis

**Leave your legacy with a planned gift.** It can be as simple as naming the Museum of Ventura County as a beneficiary in your will with a gift of \$1,000 or above. If you are interested in remembering the Museum in your trust or estate, please contact MVC's Development Team at (805) 653-0323, Ext. 330.

*The Museum of Ventura County gratefully acknowledges these individuals, foundations, organizations, and businesses for their generous support of the Museum.*

## **\$200,000 and above**

City of San Buenaventura  
County of Ventura  
TOLD Foundation  
Esther Wachtell

## **\$50,000 to \$199,999**

Barbara Barnard Smith Museum of Ventura  
County Executive Director Fund  
Bonita C. McFarland Fund  
The Charles D. and Mary A. Bauer  
Foundation  
Helen Yunker Collections Preservation Fund  
John Hammer Family  
William and Elise Kearney  
National Historical Publications  
& Records Commission  
John and Stephanie Orr  
Dorcas Thille  
The Heritage Fund, Ventura  
County Community Foundation  
Janice Willis

## **\$25,000 to \$49,999**

Anonymous  
Berry Research Library Endowment Fund  
California Small Business COVID-19  
Relief Grant Program  
City of Santa Paula  
City of Simi Valley and Simi Valley  
Chamber of Commerce  
Robert Delaney  
E.J. Harrison & Sons Inc  
Harriet H. Samuelsson Foundation  
Limoneira Company  
Meissner Corp.  
Port of Hueneme, Oxnard Harbor District  
Smith-Hobson Family Fund  
Smith-Hobson Foundation Fund  
The Gene Haas Foundation  
TOLD Corporation  
Ventura County Community College District  
Ventura County Credit Union  
Wilson Family Fund

## **\$10,000 to \$24,999**

Mimi and Philip Allin  
Amgen Foundation Inc.  
James and JJ Birkenshaw  
Elena Brokaw and Pat Miller  
Elizabeth Bugg  
California State University  
Channel Islands  
City National Bank  
Community Memorial Healthcare

Faria Family Fund  
Farm Credit West  
Bill Faulkner  
Finch Family Foundation  
Anthony Fowkes  
Nancy and Spencer Garrett  
John and Margaret Given  
John Hofer and Hofer Enterprises  
Hoffman/Haley Marina Village, LLC  
Leslie Leavens and John Krist  
Carolyn Menne  
Linda and Walter Morgan  
Patagonia  
Paul and Anne Leavens Family Fund  
Karen and Tom Pecht  
Andrea Pfister  
The Pidduck Family  
Dr. Richard Rush  
Schwemm Family Foundation  
Gregory and Shelley Smith  
Rebecca and Jeffrey Smith  
Union Bank

## **\$5,000 to \$9,999**

Aera Energy, LLC  
Al Lowe Construction, Inc.  
AssuredPartners of California Insurance  
Services, LLC  
AT&T  
Brooke Avishay  
Bank of America  
Trisha Botten  
Brighton Management  
Ellen Brokaw  
Brokaw Nursery, Inc.  
Busch Family Foundation  
Californians for Energy Independence  
Charter Communications  
The Becker Group, Inc.  
Betsy Chess  
Chrisman Estate Company  
City of Thousand Oaks  
Clean Power Alliance  
Freddie Contarino  
Driscoll's  
Katherine and Michael Enright  
Ferguson, Case, Orr, Paterson LLP  
David and Jennifer Fukutomi  
Rod Gilbert and Kaley Moore  
Craig and Judy Hodson  
Index Fresh, Inc.  
Irene Cummings Hostetler  
Endowment Fund  
Kirby Subaru

John and Carol Lamb  
Kate McLean and Steve Stone  
Montecito Bank & Trust  
OFI Property LLC  
Pierpont Racquet Club  
Lynn and Edward Poole  
Puretec Industrial Water  
Robert Calder Davis, Jr. Arts Fund  
Scott Family Foundation  
Mike Sedell  
The Sence Foundation  
Sidney Stern Memorial Trust  
Southern California Edison  
Mary Stewart  
Edward Summers  
TOArts  
VCMHA Smith Gallery Endowment Fund  
Ventura College Foundation  
Virginia Beck Davis Trust  
Williams-Corbett Foundation

## **\$1,000 to \$4,999**

Altrusa Club of San Buenaventura  
Dr. Albert Amorteguy  
Jessica Arciniega and Tomas Hernandez  
Jill and Edward Banman  
Richard Barbar  
Barbara Barraza and Alberto Ordonez  
David Bayer  
Mary Bergen  
Danielle Bonnici  
John and Cherie Brant  
Will Brokaw  
Brokaw Ranch Company  
Susan and Gregory Brown  
Marla Brown  
Gerry Browning  
Gary and Linn Butler  
Nina Butler  
California Lutheran University  
Allen and Marilyn Camp  
Claire Carty  
Sonia Cervantez  
Suzanne Chadwick  
Patti Channer  
Joseph and Valerie Chrisman  
James Chrismen  
Mary Ann Cohen  
Todd and Cheryl Collart  
Conejo Recreation & Park District  
Conrad N. Hilton Foundation  
Dr. and Mrs. Thomas R. Coultas  
Dave and Jeanette Curci  
Milton and Heather Daily

DJ'S California Catering, Inc.  
Docent Council of the  
Museum of Ventura County  
Marcia Donlon  
Ann Donlon  
Nan Drake  
Bobbi and Donald Dufau  
Linda Dullam  
Linda and John Edison  
JoAnn Evans  
Faria Family Foundation  
Fred and Susan Ferro  
Diane Flynn  
Forum of the Arts Endowment Fund  
Howard Gabbert  
Gold Coast Transit  
Jurgen and Gerry Gramckow  
John Moffatt and  
Elizabeth Broome Grether  
Kathy Grunewald  
Linda Hadlen  
Jim Harris  
James Harrison  
Cheryl and Dennis Heitmann  
Carolyn Hertel  
Thomas and Genevieve Hinkle  
Hinricher, Douglas & Porter, LLP  
Lydia Hopps  
Housing Trust Fund Ventura County  
Deborah Jackson  
Dennis Jurcak  
Kaiser Permanente  
Derek and Sawsan Knobel  
Marie Lakin  
Robin Lamar  
Deborah Larkin  
Al and Petra Lowe  
Latitudes Gallery  
Thomas and Barbara Laubacher  
J. Link Leavens  
Alisa Lewis  
Limoneira Foundation Fund  
Terri and Mark Lisagor  
Dorothy Loebl  
James and Cynthia Ludwig  
James Maddux  
John McConica  
Robert and Della McCord  
Brienne McGrath  
Beverlee McGrath  
Dianne and Duncan McKay  
Barbara Meister  
Gretchen and Marshall Milligan  
Donald F. and Rena Mills

# MUSEUM OF VENTURA COUNTY

## Thank You To Our Supporters

Judith Munzig  
Mustang Marketing  
Myra and Ronald Bank Family Fund  
Naturalists at Large, Michael Nesbitt  
Gabiella Navarro-Busch and Peter Busch  
Gary and Vicki Nichols  
Steve Noll  
Erin O'Donnell  
Ojai Oil Company  
Leon Older and Susan Craddock  
Drs. James and Linda Peddie  
Susan Peterson  
Robert and Norma Privitt  
Bill and Jane Rader  
Peter and Alison Ratcliffe  
Brian and Judy Robertson  
James and Maureen Scanlon  
David Schwabauer and Michael McMahan  
Schwabauer Charitable Fund  
Mike and Liz Silacci  
Stephen and Shirley Simms  
Pam and Samuel Small  
Joseph Smith  
Jennifer Spori  
Martha Spriggs  
George Stevens  
Timothy and Elizabeth Sullivan  
Robert Suskind, M.D. and  
Leslie Lewinter-Suskind  
Tony and Anne Thacher  
Jackie Tilton, Index Fresh, Inc.  
Barbara and Fred Tomblin  
Barbara Topping  
Janice Turner  
Theresa Tyndall  
Vance, Thrift & Biller, LLP  
Carole Vanorsdol  
Drs. Roz Warner and Michael Hogan  
Jane and Edward Waters  
Deirdre Weaver  
Weingart Foundation  
Keith Westcott  
Jonathan and Monica White  
Sylvia Wikholm  
Kelly and Robert Wilmer  
Larry and Elizabeth Wolfe  
Taylor and Tom Wolfe  
Gary and Ann Wolfe  
James and Alberta Word  
Winston and Joanne Young  
Whitten and Sally Yount

### \$500 to \$999

Dr. and Mrs. Moustapha  
and Joanie Abousamra  
Tomas Almaguer  
Everard and Brooke Ashworth  
Steven Bailey  
Vanessa and Jim Bechtel  
Eugenia Bernacchi  
Michael and Melanie Binsley  
Arthur Bliss  
Robert Bothamley  
Grace Brandt  
Kathleen Brokaw  
Jerry and Linda Bruckheimer  
Paul Carlson and Shawn Hanson  
Charles Carter  
Carol and Bob Cole  
Nancy Conant  
Jorge Corralejo  
Dennis and Sybil Coyner

Jessica Cusick  
Lorelle Dawes  
Steve and Caroline Doll  
The Donlon Family  
Marcia Drescher  
Richard Esparza and Lauraine  
Brekke-Esparza  
Karen Flock and Dan Long  
Richard and Nancy Francis  
Margaret Garcia and Rhett Beavers  
David and Jessica Goldstein  
Linda Greene  
John Grether  
Marilee Grossheim  
Mary Lou and Stephen Harbison  
Carol and Logan Hardison  
Craig and Denise Held  
El Camino High School at  
Ventura College Campus  
Dr. and Mrs. Stephen and Carolyn Hiller  
Wayne and Nancy Huff  
Jeanne Hunt  
Ann Huston  
Martha Jaffe  
Jay and Melinda Johnson  
William Kendricks  
Margaret Kimball and William McPherson  
Linda Kimbrough  
Leah Lacayo  
Jeffrey Lambert and Albert Barosso  
Martin and Maryann LaVere  
Leavens Ranches, LLC  
Geri Levine Loe  
Anne Lombard  
Nelly K. and Laiying Mac  
Jacques and Erika Manset  
Marcia and Brad Marcus  
Atilano Martinez  
Laura McAvoy and Sol Chooljian  
Joanne McDonald  
Sharon McGahan  
Mary McGrath  
Kellie Meehan  
Ernie and Suzanne Melonas  
James Monahan and Glenda Cardona  
Tricia Murdoch  
Kathleen Paulson and Jeff Heath  
Ben and Banks Pecht  
Peter and Rebecca Percy  
John Peterson  
Allan Pinkerton  
Don and Jane Pinkerton  
Portuguese Fraternal Society of America  
Press Community Fund  
Sandra Quick  
Steve and Marlayn Riley  
Sabrena Rodriguez and Andrei Bobrow  
Elisabeth Rossi  
Dianne and John Ruby  
Mary Lou Rusnik  
Santa Paula Latino Town Hall  
Bruce and Joyce Schoppe  
Linda Selby  
Denise and Jim Sindelar  
Susan and Doug Studebaker  
Dr. and Mrs. Bruce and Tobey Tabor  
Michael Tapia  
Deya Terrafranca and Scott Coppersmith  
Dr. and Mrs. John and Caroline Thacher  
Terrence and Karen Towner  
Judith Triem and Mitch Stone  
Fern and Lynn Vacca

Charles and Blake Wade  
Phil and Suzanne White  
Michael and Evelyn Williams  
Gary Wolfe  
Hiroko Yoshimoto

### \$250 to \$499

Frank and Toni Abatemarco  
Susan Adamich  
Joshua Addison  
Betty Anear  
Joanna Axell  
Sandi Banks  
Bryce and Elaine Bannatyne  
Yissel Barajas and Jaime Fernandez  
Gary and Nancy Barber  
Carol Barcellos  
Penelope Barnds and Brett Hilton  
Regina and James Barnes  
Steven and Denice Barr  
Illona and Louie Battaglia Aguayo  
Bancroft Benner  
Jane Blackman  
John Blanchard  
Caryn and Charlie Bosson  
William Bowie  
Peter Boyer  
Maren Rene Briggs  
Robert and Kathleen Brooks  
Lamar Bushnell  
Victoria Camara  
Faye Campbell  
James Capito  
Bonnie Carlton  
Tom and Patty Carmody  
Elaine Cavaletto  
Gabriel Chacon  
Harriet Clune and Richard Stewart  
Chuck Cohen  
Molly and Ronan Corbett  
Roberta and Dan Cordell  
Daniel and Janet Crotty  
Gregg and Margaret Cutler  
Duane Dammeyer  
Catherine DeLaTorre  
Paul Dentzel  
Richard and Ellen Devericks  
Patricia and Tom Dodds  
Jim and Elaine Donovan  
William and Mary Kay Doubek  
Patti Douglas  
Barbara Dupree  
Janet Dwire  
Marcia Edwards  
Tila and Angel Estrada  
Ben Faber  
Marcia Fausset  
Julie Feely  
Michelle Fieler and Kevin Berney  
Bryan Fisch and Carrie Rothstein-Fisch  
Abra Flores and Edward Burnet  
Martha and Scott Flournoy  
Kathleen and James Franklin  
Mr. and Mrs. Paul Friedrich  
Friends Ranches, Inc.  
Laura Fullilove  
Lynn and Al Geller  
Sandra Gelso  
Andrew Gilmour and Chris Cozadd  
Scott Gordon and Sabine Dodane  
John and Judi Gould  
Donald and Sandy Greenberg

Stephanie Greger  
John Hankins  
Thomas Hardison  
Barbara and Richard Harison  
Pam Hawthorne  
John and Angela Hecht  
Sharon Heintz and Berkeley Brandt  
Herbert Hemming  
Kathy Henri  
William Herbert  
Valerie and Eric Herzig  
Barbara and Larry Hilburn  
Royce Hill and John Perram  
Clyde and Lynne Hofflund  
Stephen and Margaret Holanov  
Charlotte Hoyt  
Camille Hunter  
Donald Hurley  
Zella and Hernan Ibanez  
Roxanna Ibarra  
Antonio Jankowski  
Carlos and Heidi Juarez  
Mady Julian  
Howard Kaminsky and Susan Wapner  
Diane Kanne  
Susan and Dan Kaufman  
Josh and Mary Kay Kaufman  
Linda Kegerreis  
Donna Keister  
Maggie Kildee  
Alan Kirschbaum  
Douglas and Linda Knight  
Eric and Dolly Knight  
Nancy Lander  
Vivian Lockard  
David Loe and Tisha Longoria  
Phillip and Stephanie Lukas  
Frances Mahan  
Spiro Manos, Spiro's Printing, LLC  
Craig and Nancy Marcus  
Walter B. Marriott, Jr.  
Thomas Marvel  
Ruth Maulhardt  
Ms. Nancy Maxson  
Sharon McAlexander  
Rosena McConica  
Phil McGrath  
Tom and Gerri McMillin  
Michael and Linda McTigue  
Jay and Jean Midgley  
David and Carole Minkin  
Frances and Bruce Monroe  
Judy Moore  
Carl Morehouse and Janna Minsk  
Jan Muetting  
Deborah and Bob Myman  
Frank Naumann  
John and Jessica Nava  
Alexander Navarro  
Carolynn Nicholson  
Barbara Niles  
William and Linda Nugent  
Marietta O'Farrell  
Robert Olszewski  
Oro del Norte, LLC  
Maria Ortiz  
Dr. and Mrs. Bill and Francie Parr  
Arturo and Amada Perez  
Susan Petty  
Poinsettia Painters  
Michael Powers  
William Pruim

Michael Putman and Marge Karney  
Liisa Pynnonen  
Richard and Jennifer Quint  
William and Linda Ramelli  
Eleanor Rasnow  
Tom Reynolds  
Jim Rivera and David Luna  
Don Rodrigues  
Clifford Rodrigues  
Larry and Lisa Rose  
Jill Rothstein  
Anne Roundy-Harter  
Ric and Penny Ruffinelli  
Joseph Rund and Alfonso Reta  
San Buenaventura Women's Club  
George Sandoval  
Jaime and Toni Santana  
David Schmutte and  
Janis Ricahrdson-Schmutte  
Lawrence and Cindy Schwartz  
Louise Sherman  
Mary Shore  
Timothy Smith  
Patrick and Suzanne Squires  
Alice Sweetland  
Cindy and Gary Tachell  
Sheila and Rick Tate  
Lawrence Terrafranca  
Adam and Alexis Thunell  
Ofelya Tonyan  
Adela and Ken Trainor  
Craig and Sara Jane Underwood  
Reinaldo Vargas  
Ms. Sharon Vaughan-Rawls  
Linda Velthoen  
Donald Walker  
Robin Wallace and Tim Snowber  
Julie Ward  
Robert and Ann Warnagieris  
Virginia and Jeffrey Weber  
John Williams  
Casha Yellin  
David Young and Jill Forman  
Francois and Mary Zugmeyerkas

Amelia Aparicio  
David and Regula Arnosti  
Allan and Jyl Atmore  
Bill and Julie Aurand  
Elizabeth Bachman and Robert Tallyn  
Janet Bagby  
Annette Baietti  
Frank Barajas  
Donnie and Deborah Barker  
Suzanne Barkley  
Joan and Mike Barminski  
Angela Barosso  
Neal Barr  
Chris and Linda Bartelson  
Alan and Katherine Batchelder  
Mary Jane and Richard Bauleke  
Katherine Beattie  
Calvin and Gail Beeker  
John and Kath-leen Behne  
Mary Bemis  
Steve Bennett and Leslie Ogden  
Bennett's Honey Farm/Chip's Bees  
Leila Benoun-Kaseke  
Irving Bergman  
Bess and Ruben Biason  
Brenda and Jerry Bodie  
Robert and Jennifer Boelts  
David and Alexis Boeshaar  
William and Susan Boetticher  
William Boezinger  
Sue Bolton  
Clark Bond  
John and Nancy Borchard  
Diane Bovee  
Roland Boys  
Bob and Mary Braitman  
Shelli Brennan  
Barbara Brough  
Jerry and Gail Brown  
Barbara Brown and Bert Van Auker  
Lisa Brown  
Jerry and Connie Brown  
Bruce Kelsey  
Mike and Nancy Brucker  
Dorothy Brunkan  
Alexandra Bruzzese  
Donna Burger  
Cathy Butter  
California State University  
Channel Islands Library  
Virginia Camarillo  
Joyce Cantrell  
Michael Capesius

Bernard and Madeleine Carteron  
Constance Casavan and Heather Tunigold  
Michael Case and Maribeth Butler  
Roger and Sandra Case  
Charles and Maryrose Caspary  
Candace and Bret Cassidy  
Steve and Linda Cassinelli  
Richard Castaniero  
Janice Chan  
Patti Channer  
Yun-Seng Chao  
Steve and Jane Chawkins  
Jennifer and Yu Cheng (Eric) Chen  
Jeffrey Chester and Kathryn Montgomery  
Robert and Pauline Chianese  
William Chilcutt  
Shirley Chiu  
Charles Cole  
Angela Colicchio  
Jack and Wendy Collings  
David and Tina Comden  
Dale Condra and Carolyn G. Briggs  
Roger Conrad  
David Cook and Reta Tyree  
Stephanie Coray  
Mr. and Mrs. Robert Coultas  
Edward and Sharon Crane  
Charlotte and Michael Craven  
Joel and Chris Crawley  
Jonra Cross and London Fletcher  
Jenny Crosswhite and Daniel Sandoval  
Jim and Donna Cruz  
David and Tina Cullenberg  
Joy and Curran Cummings  
Laurie Curtis-Abbe and Mark Abbe  
Daniel Danzig  
Wayne and Barbara Davey  
Kenmere and Robert Davidson  
Gary and Bonnie Davis  
Christina and Brennan Daw  
Jennifer and William Dawes  
Carol Dawes  
Marsha and Phil De La O  
Colleen Delaney  
Vera Devera  
Marcia Dibble  
Andrew and Diane DiConti  
Laura DiConti  
Jan Dietrick  
Beverly Drapeau  
Judy and Dan Dugan  
Dennis and Jane Dwire  
John Echeveste

Chris Effimoff  
Sharon Ehrlich  
Chuck and Cheryl Engel  
Linda England  
Karl Enockson  
Maureen Erickson  
Laura and Victor Espinosa  
Todd Everett  
Margaret Fall  
Kate Faulkner  
Ruthann and Jerry Feingold  
Joanne Fields  
Marge Figurski  
Aida Fisher  
Judy and Mark Fleischman  
Kevin and Stephanie Flint  
Mary and Richard Follenweider  
Bill and Elaine Fontana  
For Your Home Furniture  
Rebecca Fox  
Dr Stanley and Heidi Frochtzwaig  
Johanna Gabbard and Michelle R. Boroski  
Lucia Galgano  
Richard and Mary Gallagher  
Terry Garman and Lyndon Turner  
Cameryn Garnett  
Liz and Art Gaspar  
Ilene and Howard Gavenman  
Debbie Gohlke  
Lynn and David Goldsbrough  
Jovitajay and Stephanie Gonzalez  
Josephine and Rosa Gonzalez  
Stanley Gordon  
George and Christine Graham  
Donald Grainger  
James and Judith Graves  
Gary and Valerie Gray  
Lester Gray  
Judy Greycloud  
Carol Griffin  
Jeffrey Grimes  
Sylvia Griswold  
Hector Guerrero  
Yvonne Gutierrez  
Toni Guy  
Margo Haas  
Douglas Halter and Randy Encinas  
Annie Hankinson  
Margaret Harris  
Harvey and Jessica Harris  
Luisa Haskell  
Rick Hayes and Kathy Sage  
George and Christine Heavican

#### \$100 to \$249

Kathleen Abbott-Mayer and Theo Mayer  
James and Joanne Abing  
George Abrams and Martha Symes  
Ann Ahlstone  
Dr. Jose Alamillo  
Wendell and Denise Allen  
Elizabeth and Victoria Ammons



# MUSEUM OF VENTURA COUNTY

## Thank You To Our Supporters

Sanger Hedrick  
Jean Hefter and Dana Park  
Dave and Kathy Henri  
Bill and Pam Hicks  
Kay Hill  
Ross and Carolyn Hoffman  
Mike Hollins  
Mary Sue Horgan  
Harvard and Helen Horiuchi  
Lisa and Darin Hornbaker  
Carol Hughes  
Tegan Hutchinson  
Patrick Hylton  
Rosemary Icardo  
Maryanne and Frank Irving  
Ellen Israel  
Liza and David Jacobs  
Tammy and Curtis Jensen  
Lynn Johnson  
David and Tina Johnson  
Stanley and Judith Johnson  
Thomas Jones  
Jue & Associates  
Susan and Kaplan and Michael Israel  
Joanne Kaplan  
Diana and Bill Kelley  
Richard Kelman and Patricia McCourt  
John and Sheena Kennedy  
Jude Kessler  
Ann Kidson  
Ruth Kilday  
Carrie Kim and Mark Sandstrom  
Don and Mona King  
James Kirkpatrick  
Lynne and Robert Klamser  
Mrs Susan Kleine  
Mary and Peter Kobashikawa  
Josh and Suzzi Koenig-Brown  
Lynn Krantz  
Sarah and Mike Kumazawa  
Mary Labarge  
Lucien Lacour  
Mark Lager  
Alan and Nenifa Langville  
Erin Larner  
Kate and Fran Larsen  
Ms Wendy Lascher  
Terry and Rick Lee  
Kurt Lehnhardt  
Fredda Leiter  
Jennifer Lenzo

Richard LeRoy  
Debra Levine  
Karen Lewis  
Karen Lewis  
Kay Liddi  
Carol Lindberg  
Timothy and Kathryn Linman  
Shelley Littleton and Eleanor Songer  
Drs Geoff and Nancy Loman  
Kathy Long  
Dr. Tracy Long  
Dennis and Jeanette Longwill  
Laura Lopez and J. Antonio  
G. Lopez, MD  
Jacquie Lovell and Tom Mathews  
Patricia Maki  
Suzanne Manriquez  
Lawrence Manson and Delia Gorey  
Kevin and Megan Marble  
Jan and Abbe Marholin  
Edward and Mimi Maring  
Rev. John Martin  
Andrea Martin  
Betty and Al Martinez  
John and Linda Martinez  
Steve Mason  
Patricia Masterson  
Frank and Charaline Maxim  
Lois McCampbell  
Thomas and Janice McCormick  
Sally McCormick  
Roz McGrath  
Kelly McKisic  
Nancy and Darren McMillan  
Carol McMullin  
Neale and Sue McNutt  
Carol Mechanick  
Beth and James Medina  
Kenneth and Lynn Merideth  
Jim and Kitty Merrill  
Luke and Michelle Metz  
Robert Milazzo and Mary Stanistreet  
Gerald and Ana Miller  
Ines Monguio  
Leaf Monroe  
Curt and Jane Montague  
Greg Monterrosa  
Dr. Diane Moore and Lyn Utsunomiya  
Aurora Mordey  
Michael Moreau and Florence Yau  
Theodora Morris  
Chuck and LaDene Morrison

Pamela Mortensen  
Kioren Moss  
Michael Musser and Cindy Mulhollen  
Greg and Margaret Nelson  
Vivian and Tom Nelson  
Mary Newman  
Annette Nino  
Michelle Nosco  
Margaret November and George Vidacovich  
James and Catherine Nye  
Merle Oberg  
Dr. Rose-Lise Obetz  
Michael O'Daniel and Joanne Zivich  
Jeff Ohlfs  
Thomas E. and Mary M. Olson  
Linda O'Neill  
Bob Orlando  
Warren and Gail Paap  
Kymberley Peck  
Monica Pereira  
Mr. and Mrs. Rafael Perez  
Rain Perry  
Carol Peterson  
Linda Peterson  
Michael Peterson  
Petrolog, Inc.  
Petru Corporation  
Joan and Gary Phelps  
Emperatriz Pinedo  
Dan and Susan Pinkerton  
Arlene Pinkerton  
Bill and Michelle Piotrowski  
Roberta Pittman  
Pleasant Valley Historical Society  
Scott and Ginny Powell  
Paul and Pauline Powers  
Victoria Pozzi  
Roy Prince  
Jeanne Pruitt  
Supervisor Carmen Ramirez  
Marianne Ratcliff and Kevin Rainwater  
Pat and Susana Reeder  
Robert Rich  
Dick and Martha Richardson  
Mark and Eleanor Richman  
Bill and Rayanne Robe  
Elizabeth Rodeno  
Harmony Rodriguez  
Julie and Mathias Romacker  
Paul Rood  
Barbara Rose

Ursula Rowe  
Robin Roy  
Richard Rudman  
Ed Russell  
Zaki and Ann Salahuddin  
Chuck and Susan Samonsky  
Sallie Sanchez  
Luis and Lori Sanchez  
Sandra Sanders  
Patti and Mike Savage  
Karen Savitt  
Robert and Alison Sawyer  
Timothy Schiffer  
Robert Schleef and Priscilla Holms  
Ms Debora Schreiber  
Joe Schro Alan and Jean Scott  
Mary Scott  
Susan Scott, Ventura Music Festival  
Nicole and Tom Scurrah  
Edward Selby  
Jonathan Serret  
Terry Shain  
Shirley Shanahan  
Jody Shapiro  
Kimberlee Shelton  
Lynette Sim  
Dan Singer  
Doug and Nena Singletary  
Jonathan Hamilton and  
Marisa Solórzano-Hamilton  
Annette Solorzano  
John Stauffer  
Karilyn Stewart  
Fran Stewart  
Robert Stewart  
Kenneth Stock and Ann Reynolds  
Elle Stockton  
Judith Streamer  
Margaret Strobel  
Michael Stump  
Renee Sutton  
Kenneth and Karen Swarm  
Dr. Michael Swartout  
Betty Swift  
Melvyn and Judith Swope  
Constance Taft  
Susan and Rob Talmadge  
Carmen Taylor  
Greg Thayer and Debra Renick  
Shirley Thayer  
Jeanne Thompson  
Jill Thrasher



Lynne Thurston and Rudolph Kizer  
Sidney Tinberg  
John Tiszler  
Gary and Pamela Tonucci  
Totally Local VC  
Mary Travis  
Treeco, Inc.  
Marcia Turner  
Mark and Lysa Urban  
Robert Valles  
Friday Gretchen Treur and  
John Henry Treur II  
Laurie Vanoni  
Dr. Roberto Vargas and  
Rebecca Mendoza  
Yvonne Vargas  
Leslie Velez  
Ventura College Library  
Ventura Pacific Co.  
Gretchen Vik  
Marilynn Viles  
Rev. Audrey Vincent  
Mary Volpe  
Diane and Zioh Von Heyneman  
Bruce Walker  
Adele Walsh  
Michael Ward  
Beverly and Kirby Ward  
Katherine Warner and Pete Dibble  
Robert Warner and Isabel Downs  
Jeanne Warren  
Linda and Gary Watson  
Timothy and Leslie Wawrzeaniak  
Wanda Wearley  
David Weinstein  
Teri White and Bob Keenan  
Jim Whitney and Janette  
Daniel-Whitney  
Joe and Sarah Wigert  
Catherine and Wolfie Wiggins  
Roger Wight  
Linda and Norman Wilkinson  
John Williams  
Mel and Danielle Willis  
Darrel and Beth Wilson  
Cheri Wolfe  
Dr. and Mrs. Doug and  
Caryn Woodburn  
John Woolley  
Don and Carley Worth  
Laura Yanez and David Gonzalez  
Jean Yeto  
Gerald and Cynthia Yoshitomi  
Joanne and Tom Young  
Mayor John Zaragoza  
Wade and Pat Zimmerman  
Wilhelmus and Johanna Zwinkels

## \$5 to \$99

Diomedes Abcmnxyz  
Neal Abramson  
Vanessa Acosta  
Jane Advani  
Jazmin Aguayo  
Alyce Akers and Patrick Nichelson  
Judi Allen  
Michael Almer and Linda Locklear  
Lorna Amundson  
David and Crystal Anderson  
Susan Andrews  
James Arellano  
Miriam Arichea

Judy Armstrong  
Fran Arner-Costello  
Mary Arnold  
Joan Aronson  
Noel Arthur  
Kathy Asher  
Mark and Linda Bacin  
Marie Baez  
Nick and Marina Baker  
Marion Baranowski  
Jeff Barber  
Joyce Barger  
Suzanne Barnes  
Toni Barnett  
Susan Barrera  
Scott Bartels  
B. Bartling  
Marie Battle  
Barbara Beach and  
Louise Bond Warren  
Ben and Megan Beatie  
Stephanie Becerra and Robert Guizar  
Daniel Begalla  
Christine Beirne  
Eric Bergh  
Andrea Berrelleza  
Connie Biggers  
Ken and Sue Birdsall  
Janet and Jim Black  
Judy Blades  
Charlene Blalock-Carlson  
Donna Blasius-Pitzler  
Bart and Michelle Bleuel  
Rick and Debe Bloom  
Debbie Blount  
Lynda Blue  
Ben Borger  
Ellen Boudreaux  
Jo Bowers  
Diana Boydston  
Jean Boyer  
Sandy and Will Bredberg  
Kathleen Briggs  
Karin Brinkley and Chris Paszty  
Pamela Briscoe  
Carol Brock  
Garrett Brown  
L.E. Brown  
Karen Brown, PhD  
Nancy Brown-Molony  
Vella Buchanan  
Deborah Burns  
Cindy Pitou Burton  
Carol Bury  
Mary Cacciapaglia  
Rachel Cahill  
Rhonda and Daniel Callahan  
Myrna Cambianica  
Douglas and Christine Campbell  
Liz Campos  
Dinora Cardoso  
Linda Carson  
Eric Carter  
Virginia Celeste  
Craig Chambers  
Patty Chan  
Rosemary Chavoya  
Yvonne Cherbak  
Amy Cherot  
Gayel Childress  
Jim and Fran Christiansen

Muriel and George Christianson  
Helen Chtourou  
John Cinatl  
Erwin Clahasse  
Karen Clark  
Marguerita S Cobelens  
Bryan Cody  
Jill Coffan  
Alana Coghlan  
Loretta Collet  
Jean Collins  
Colleen Conway  
Susan and Robert Cook  
Joan Cook  
Daveta Cooper  
Lyzette Cornejo  
Linda Corrigan  
Sandra Crawford  
Chris and Paul Crice  
Janet and Tom Crozier  
Wesley Cullins  
David Culton  
Sharon Cunningham  
Mary and Ray Currence  
Suzanne Curtin  
Eileen Cusimano and Mary Smith  
Harvey and Nellie Cusworth  
Nicole D'Amore  
Harry Davidson  
Patrick and Roberta Davidson  
Jackie Davis  
Tricia and Gideon Davis  
Aimee Jo Davis and Gina Nicholls  
Curt and Carolyn Davison  
Claudia Davoli  
Karen De La Pena  
Lori Dearman  
Ron and Barbara D'Incau  
DKG Gamma Chapter  
Mary Dolliver  
Teresa Donegan  
Nicole Doner  
Karen and Robert Draper  
Lori Drysdale  
Nan Durantini  
Keith and Linda Duval  
E. P. Foster Library  
Pamela Easter  
Hannah Eaton  
Mike and Harmony Eckberg  
Elaine Edwards  
Lauraine Effress  
Joan and Bob Egbert  
Gregory Eidson  
Norma Ekman  
Carrie Eller and Rose Marie Eller  
Myrtis Ellis  
LaVaughn Engblom  
Georgianna Erskine  
Nancy Escher  
Madalyne Esrock  
Barbara Evans  
Bill Everhart and Pam Davis  
Robin Faigin  
Donna Fairfield  
Christine Farro  
Bill and Kate Faulkner  
Donald and Linda Fay  
Ada Feldman  
Beryl Feller  
Ben Fielder

Tom and Susy Fineman  
Wesley Fish  
Linda Fisher  
Deborah Fitzgibbons  
Martin and Marianne Flam  
Geraldine Fletcher  
Lynn Fogel and Kurt Triffet  
Shelly Foote  
Michele Foster  
Frank Foster and Julie Hedrick  
Naomi and Neal Fowler  
Mark Fox  
Julie Fox  
Vanessa Frank  
Monica Frazier and Robert McCarty  
Linda Frazier  
Helen Fredell  
Jim Friedman  
Fulcrum Arts  
Gloria Garcia and Mary Howard  
Jim Gardner  
Greg Gardner  
Kay Giles Michael Mariani  
Judi Gill  
Teri Gillard  
Judy Gilliard  
Leyland Gillibrand  
Girl Scouts of California's Central Coast  
Joan Gomes  
Lourdes Gonzalez  
Alan Gordon  
Grant Brimhall Library  
Kim Gregory  
Julie Grist  
Lynda Gruber  
Kathryn and Grant Gullickson  
Susan Gunen  
Amy and Cassandra Gurrola  
Jimmie Guzik  
Patricia Halverson-Henas  
Susan Hancock and Richard Orne  
Nancy Hankinson and Steven Hoffberg  
MB Hanrahan  
Mary Hansen  
Lennie Harris  
Linda and Michael Harris  
Ruth Hartman  
Cynthia Hashbarger  
Patricia Havens  
Marjorie Hawkins  
Becky Haycox and Dylan Smith  
Pamela Hazard  
Annette Heck  
Alyse Heggen  
Helen Held  
James Heller and Carol Ecklund  
Brad Helton  
Roman Hernandez  
John and Laurel Hewson  
Marilyn Hilton  
Lynnae Hitchcock and Kevin Gray  
Karen Hoffberg and Katherine Freibergs  
James Holden  
Bruce Holley  
Tammy Holmes  
Dennis and Arlene Horwitz  
Clark and Diane Hubbard  
Bruce Hunt  
Michael and Laurie Hurst  
Eric Hvolboll  
Manny Ilasco

# MUSEUM OF VENTURA COUNTY

## Thank You To Our Supporters

Saritha Ivaturi  
 Julie Jaramillo  
 Carol Jensen  
 Helen Johnson and Michael Harrison  
 Jennifer Johnson  
 John and Mary Johnson  
 Susan Johnson  
 Jennifer Johnnson  
 Gail Johnston  
 Lana Jones  
 JJ Jones and Tim Engels  
 Kathy Julian  
 Joanne Julian  
 Debbie Kaskus  
 Kris and Meenal Kelkar  
 Mike and Merrie Kelley  
 Pamela Kelley  
 Nancy Kellogg  
 Michael and Linda Kelly  
 Carol and Sarkis Keochekian  
 Judy Kerr  
 Janet Kessler  
 Taras and Lily Kiceniuk  
 Andria Kidd  
 Jo Kirk  
 Karen and Doug Kirk  
 Mary Knox  
 Jay Kosoff  
 James Koss  
 Christine Kovell  
 Carol Kurtz  
 Elyse Kutz  
 Marvin Kwit  
 The Richard Lagomarsino Family  
 Susanne Lammot, MD  
 Kris Langabeer  
 Lou and Eric Langkusch  
 Jeanne Larocco  
 Matthew and Alicia LaVere  
 Sheila and Herbert Lazarus  
 Selkie Leggett  
 Heather and Steven Leonardo  
 Constance Leshin  
 Charles Levin  
 Ellen Lewis  
 Marie Liebman  
 Lightning Ridge  
 Patricia Lindley  
 Elva and Weston Lindsey  
 Barbara Lipscomb  
 Victoria Lloyd  
 Joyce Lombard  
 Robert Lopez  
 Diego Lopez  
 Los Angeles Public Library  
 Rockwood Ludes and Susan Crane Ludes  
 Andrew Ludlum  
 Shamsi Luna  
 Jessica and Brad Lunetta  
 Alicia and Ken Luper  
 Sherry Lyons  
 Carlos Magallanes  
 Trinh Mai  
 Kathleen and Keith Manion  
 Lois Manning  
 Genesis Manzo  
 Stella Marin-Denny  
 Alicia Maris  
 Jo Marsh  
 John and Frances Marshall

A. Diane Martell  
 Linda Martinez  
 Grace Martinez  
 Eleanor Martinez  
 Judith Masterson  
 Robin Matt  
 Emma Mayer  
 Gary and Nancy Mazziotti  
 Edward McCombs  
 Pat McCormick  
 Donna McGue  
 Walter McKinny  
 Anita McLaughlin  
 Sean McSherry  
 Susan Measures  
 Mary Meeker  
 Kristen Mello  
 Stephen Mendel and Sharon Coughran  
 Forrest Merrill  
 Trygve Mikkelsen  
 Patricia and Mathew Miletich  
 Sherwood Milleman  
 Judy Miller  
 Patricia Miller  
 Denise Milligan  
 Rosemary Molloy  
 Sherman Moore  
 and Pamela Libis-Moore  
 Moorpark College Library  
 Kathleen Morris  
 Jeanette Mueller  
 Duke Mulholland  
 Burton and Irene Munger  
 Dr. Maria Munguia  
 and Ray Wellman  
 Cliona Murphy and Jorge Talamantes  
 Nan and Hal Nachenberg  
 Sally Narkevic  
 William and Carolyn Neel  
 Richard Newsham  
 John and Leslie Nichols  
 Gina and Gary Niebergall  
 William and Patricia Niederst  
 Marta Norkin  
 Terry and Nancy O'Brien  
 Gerald and Joan Olsen  
 Kris Olson  
 Helga Ono  
 Joann Ontiveros  
 Nicholas Orr  
 Joshua Ortiz and Bonnie Merrick  
 Cecilia Ortiz  
 Steven Ortiz  
 Frances Osullivan  
 Shay P.  
 P.E.O. Chapter FZ  
 Jean Panelli and John Hill  
 Theadora Patterson  
 Laura Pedegana  
 Jone Pence  
 Mary Perez-Moreno  
 Jamie Persoon  
 Dave Peters and Donna Forry  
 Lynne Peterson  
 Gary and Jean Phillips  
 Fred Phipps and Catheryn Trainer  
 Ron and Martha Picciotti  
 Carol Piros  
 Doris Pittman  
 Paula Poll

Matt and Pam Portenstein  
 Rick Power  
 Roanna Prell  
 The Honorable Roland Purnell  
 and Mrs. Peggy Purnell  
 Nancy Quam  
 Clinton Quan  
 Terry Quick and Ronald Perkovich  
 Sylvia Ramirez  
 Rick Ray  
 Juliet Ream  
 William Reilly and Kimberly Filar  
 Maria and Michael Richards  
 Russell Richardson  
 Nancy Robarge and Michael Deckard  
 Robert and Sheryl Roberts  
 George Roberts  
 Joan Roberts  
 Delaney Rodriguez  
 Janet Rodriguez  
 Donna and Bill Roff  
 Barbara Roger  
 Helen Rolls  
 Paul and Judith Rood  
 Hope Rosenfeld  
 Cheryl Ruiz  
 Edward Russell  
 Michael Russell  
 Mary Rydberg  
 Sylvia Salas  
 Judith Salazar  
 Ellen Sanders  
 Bowen Sarahang  
 Sora Sarahang  
 Camille Schaetzel  
 Donna Schmidt  
 Patricia Schmidt  
 Susan Scott  
 Yvonne Seabold  
 Irene Seda  
 Kevin Seelos  
 Katherine Seifert  
 Nancy Settle  
 Tom and Judy Shaw  
 Jeffery Sherman  
 Madeleine Sifantus  
 Jacklyn Simpson and Conrad Schmidt  
 Sandy Singer  
 Marianne Slaughter and Dee Press  
 Bonnie Smith  
 Dana Smith  
 Karen Snyder  
 Andy Sobel and Anne Stehly  
 Elizabeth Soto  
 Carol Spector  
 Jane Spiller  
 Linda Spink  
 Carol Spinner and Charlene Digman  
 Marian St James  
 Beth Steele  
 Lori Steinhauer  
 Carol Stengem  
 Woddie Stevenson  
 Harrison Stroud  
 Robert Sussman  
 Sandra and Paul Swanson  
 Kathleen Sweeney  
 Katherine Sweetser and Allan Frank  
 Kerry Swift  
 Ben Tapia  
 Judith Tarantino

Sandy and Bill Tenenbaum  
 Arline Tepper-Trister  
 Maria Teran  
 Edward Terpening and Michael Estrada  
 Katrina Titus  
 Cassandra Tondro  
 Fernando Torres  
 Sandra and Robert Tovas  
 Patricia and Tyler Tugwell  
 Marie Unini  
 University of California, Bancroft Library Acquisitions  
 Josué Vásquez  
 Jovita Valdez  
 Marlene Valdez  
 Linda Vanakin  
 Edward Vasquez  
 Juanita Vega and Seana-Marie Sesma  
 Juan Venegas  
 John Vincent  
 Clint Vocke  
 Mary Vomund  
 Madeleine and Sanford Waddell  
 Karen Wade  
 Alix Walker  
 Nan Waltman  
 Dr. and Mrs. Lee and Christine Wan  
 Dave Ward  
 Leslie Warren  
 Maggie Watson  
 Lindsay Webster  
 Rauleen and Tom Weckworth  
 Marie Weed  
 Tessa Weeks  
 Tanya Weimer  
 Christy and Timothy Weir  
 Catherine Weisz  
 Barbara Weitekamp  
 Alice West  
 Yvonne Westervelt  
 Gary Wetzel and Shirley D. Vivion  
 Bruce and Rebecca Wetzel  
 Estrella and Teresa Whaley  
 Dotty Wheeler  
 Eliane and Rick White  
 Frederick White  
 Paul Whitehead  
 Marc and Julia Whitman  
 Richard Wibelmann  
 Joyce Wiechert  
 Kathryn Wilbur  
 Rosemary Wilde  
 Daniel Wilkinson  
 Eileen Williams  
 Teri Willison  
 Karen Wilson  
 Sian Winship  
 Margaret Wise  
 Mr. and Mrs. Ed Wohlenberg  
 Sandie Wolfe  
 Amaranthe Wolff  
 Jeanette Woodburn  
 Georgia Wyatt  
 Patricia Wynn  
 Camille Yannantuono  
 Russell and Paula Yermasek  
 George Zahab  
 Kay Zetlmaier  
 Lucas Zucker and Amisha Deyong-Dominguez  
 Valerie Zwirn

## IN MEMORIAM: HONORING THE LEGACY OF TWO MVC ARTISTS

As we reflect on the legacies of those we have lost in 2022 and 2023, MVC honors two beloved artists from the collection of the Museum of Ventura County.

### OMAR D'LEÓN (1929 - 2022)



*Omar d'León, Freedom of the Sweet Bird of Enchantment, 2000, oil on canvas, 22" x 30". Gift of the artist. In the collection of MVC.*

Nicaraguan artist Omar d'León (born Omar d'León Lacayo y Estrada) leaves behind a profound legacy. Regarded as one of Nicaragua's most distinguished artists of recent decades, Omar gained international acclaim while making Ventura County his home.

Escaping the turmoil of the Nicaraguan Sandinista Revolution of 1979, the artist settled in Camarillo, where he resided until his passing in 2022. In his artistic journey, Omar drew inspiration from the frescos of Pompeii, evident in his distinctive crosshatching technique infused with elements of impressionism. His life was a tapestry of contrasts—comfort and hardship, beauty and destruction, exuberance and lifelessness—all of which are evidenced in his expressive artworks.

### GAIL FAULKNER (1947 - 2023)

With an unwavering passion for capturing the natural world in its most tranquil and balanced state, Gail Faulkner's art embodies harmony and equilibrium. Gail's artistic realism transports viewers to lush, serene environments, each moment deliberate yet immediate, where the magic lies in the ever-unfolding array of shapes and colors. From delicate reflections on ceramics, to intricate weaves of antique textiles, to the vibrant array of produce and nature's verdant offerings, Gail's precision in painting blurs the lines between reality and the artistry of watercolor.



*Gail Faulkner, Zapotec Weaving, 2019, watercolor, 21" x 27". Gift of the artist. In the collection of MVC.*

## IN MEMORY OF:

**Lila Atkisson**  
Altrusa Club of San Buenaventura

**Roberta Ann Baptiste**  
Elena Brokaw and Pat Miller  
Faria Family Foundation  
Harvey and Jessica Harris  
William and Elise Kearney  
Richard Pidduck  
Allan M. Pinkerton  
Dorcas H. Thille

**Genevieve "Genny" Laubacher Basso**  
Craig and Denise W. Held

**Earl Gene Bennett**  
The Richard Lagomarsino Family

**Bernard "Bernie" Bernacchi**  
Eugenia Bernacchi  
William and Elise Kearney

**Bob Brown**  
Ed Russell

**Warren Brown**  
Carol and Bob Cole  
Dorcas H. Thille

**Robin Browning**  
Elena Brokaw and Pat Miller  
Gerry P. Browning  
Linda M. Hadlen  
John and Frances Marshall  
Deya Terrafranca

**Anthony Caezza**  
Richard Pidduck

**Gail Carter Robinson**  
Kioren Moss

**Pat Carter Bodde**  
Kioren Moss

**Marlene Case Almquist**  
Jan Muetting

**Patti Channer**  
Elena Brokaw and Pat Miller  
Nancy and Spencer Garrett  
William and Elise Kearney

**Larry Clapper**  
Gretchen Vik

**Eloise Cohen**  
Elena Brokaw and Pat Miller  
William and Elise Kearney

**Mr. and Mrs. Coultas**  
Dr. and Mrs. Thomas R. Coultas

**Charles Alan Covarrubias**  
Elena Brokaw and Pat Miller  
Dave and Kathy Henri  
William and Elise Kearney  
Thomas and Barbara Laubacher

**Omar d'León**  
Elena Brokaw and Pat Miller

**Larry Dawes**  
Lorelle Dawes

**David Donlon**  
Jane and Edward Waters III

**Jenny Do**  
Trinh Mai

**Ann Doud**  
Claire M. Carty

**Joseph Doud**  
Claire M. Carty

**Helene Dufau**  
Craig and Denise W. Held

**Jerry Wayne Edmonds**  
Lori Drysdale  
Richard Pidduck

**Donald "Don" Kent Facciano**  
William and Elise Kearney

**Ventura County Supervisor  
John K. Flynn**  
Elena Brokaw and Pat Miller  
Diane Flynn  
William and Elise Kearney

**Ross Goodman**  
Elena Brokaw and Pat Miller  
Gerry P. Browning  
Sylvia Wikholm

**Sam Grasso**  
Richard Pidduck

**Anne Shilton Graumlich**  
Lynn and David Goldsbrough

**Larry Joseph Greene**  
William and Elise Kearney

**Marry Deonne "Dede" Greene**  
William and Elise Kearney

**Patricia Lee "Tish" Harris**  
Elena Brokaw and Pat Miller  
William and Elise Kearney

**Sharon Harrison**  
Elena Brokaw and Pat Miller  
Nan Drake  
William and Elise Kearney  
Al and Petra Lowe  
Linda Kay Morgan

**Calvin L. Havekost**  
Elena Brokaw and Pat Miller

**Edwin L. Hill**  
James L. Monahan

**Randy Hinton**  
William and Elise Kearney

**Bob Holt**  
Debora Larkin

**Keith Allan Hunter**  
Richard Pidduck

**John Keefe**  
Linda M. Hadlen

**Richard Keister**  
Elena Brokaw and Pat Miller  
Donna Keister  
Carol and Sarkis Keochekian

**W. Richard Keller**  
James and Cynthia Ludwig

**William and Rose Anne Klope**  
William and Elise Kearney

**Mary Leavens Schwabauer**  
David and Tina Cullenberg

**Irene Level**  
Sylvia Wikholm

**James Ormonde Lloyd-Butler**  
Elena Brokaw and Pat Miller  
Suzanne Chadwick  
Nancy and Spencer Garrett  
Craig and Denise W. Held  
Carolyn W. Hertel  
William and Elise Kearney  
Sharon P. McGahan  
Richard Pidduck  
Martha A. Spriggs  
Dorcas H. Thille  
Laurie Vanoni

**Patty Lowthorp**  
Craig and Denise W. Held

**Bill Lucking, III**  
Helen L. Fredell

**Bill Lucking, Jr.**  
Helen L. Fredell

**Evelyn Maddux**  
Debra Levine

**Carolyn Joyce Maynard**  
William and Elise Kearney

**John Mathews**  
William and Elise Kearney

**John McCarthy**  
Ann Ahlstone

**Patrick James McCarthy**  
William and Elise Kearney

**John McDougal, Sr.**  
William and Elise Kearney

**The Honorable Charles  
R. McGrath**  
Dr. and Mrs. Thomas R. Coultas

**Roz McGrath**  
Elena Brokaw and Pat Miller  
Dr. and Mrs. Thomas R. Coultas  
William and Elise Kearney

**Walter T. McKinny**  
Craig and Denise W. Held

**William C. "Bill" Milligan**  
Craig and Denise W. Held  
Edward W. Russell

**Suz Montgomery**  
William and Elise Kearney  
John Hankins

**Jerrold Morris**  
Docent Council of the  
Museum of Ventura County

**Roger Myers and Kathy Stone**  
Elena Brokaw and Pat Miller  
William and Elise Kearney  
Kate McLean

**Julia Frances Campbell Namba**  
Elena Brokaw  
Nancy and Spencer Garrett  
William and Elise Kearney

**Richard Naumann**  
Jane Kimball Pidduck

**Joanna B. Newton**  
Elena Brokaw and Pat Miller

**Vincent James O'Neill, Sr.**  
Arthur Carlin Bliss, Jr.  
Elena Brokaw  
Robert D. Coultas  
Gregory L. Edison

**Maria Anastazia Saviak Older**  
Leon Older

**Betty Pfeiler**  
Claire M. Carty

**Mary Pfeiler**  
Craig and Denise W. Held

**Marry Anne Pinkerton**  
Craig and Denise W. Held  
Richard Pidduck

**Supervisor Carmen Ramirez**  
Jessica Arciniega  
Barbara Barraza  
Elena Brokaw and Pat Miller  
Betsy Chess  
Jorge Corralejo  
Docent Council of the  
Museum of Ventura County  
William and Elise Kearney  
Leslie Leavens  
Roy Prince  
Clifford Rodrigues  
Dr. Richard Rush  
Bruce and Joyce Schoppe  
George J. Sandoval  
Reinaldo Vargas

**Donald William Reeder**  
Mary Bemis  
William Bowie  
Craig and Denise W. Held  
Richard Pidduck  
Allan M. Pinkerton  
Joe and Sarah Wigert

**The Richardson Families**  
David Schmutte

**Jere Robings**  
Elena Brokaw and Pat Miller  
William and Elise Kearney

**Craig Nelson Robinson**  
Milton and Heather Daily

**Lois Sandall**  
Elena Brokaw and Pat Miller  
Gary and Valerie Gray  
William and Elise Kearney  
Joanne and Tom Young

**Patricia "Pat" Scholle**  
Craig and Denise W. Held

**Ann Schreiner Collins**  
Claire M. Carty

**Joseph Collins**  
Claire M. Carty

**Phil and Betty Selby**  
Edward Selby

**Ted Selby**  
William H. Boezinger  
Elena Brokaw and Pat Miller  
Steve and Linda Cassinelli  
Carol and Bob Cole  
Shelly Littleton  
Rosena McConica  
Marilynn Schmitt Viles  
Sharol Vaughan-Rawls

**Truman "Glenn" Sipes**  
Craig and Denise W. Held  
William and Elise Kearney  
The Richard Lagomarsino Family

**Kathleen "Kathy" Sisson**  
Elena Brokaw  
Gerry P. Browning  
Docent Council of the  
Museum of Ventura County  
Linda M. Hadlen  
Jeanne Hunt  
Carol Jensen  
Linda Kimbrough  
Jennifer Spurl  
Sylvia Wikholm  
James and Alberta Word

**Richard A. Slater**  
William and Elise Kearney

**Harriet Rae "Midge" Stork**  
Elena Brokaw and Pat Miller  
William and Elise Kearney  
Kate McLean

**Bruce Montgomery Strathearn**  
Elena Brokaw and Pat Miller  
William and Elise Kearney  
Kate McLean and Steve Stone

**Esther Tefertiler**  
Anne Roundy-Harter

**Joy Thomas Dodge**  
Claire M. Carty

**Marie McLaughlin Thomas**  
Claire M. Carty

**Richard Charles Utter**  
Craig and Denise W. Held

**Steve Vacca**  
Ed Russell

**Donald Steve Waunch**  
William and Elise Kearney

**Charles Ellery Whipple, II**  
Elena Brokaw and Pat Miller

**David John Whipple**  
Elena Brokaw and Pat Miller

**Robin Ann Whipple Bollinger**  
Elena Brokaw and Pat Miller

**Duane Wikholm**  
Elena Brokaw and Pat Miller  
Docent Council of the  
Museum of Ventura County  
Linda M. Hadlen  
Patricia M. Masterson

## IN HONOR OF:

### Mimi and Phil Allin's

#### 170th Birthday

Brenda and Jerry Bodie  
Elena Brokaw and Pat Miller  
Gery Wetzel

### Noel Arthur

Anonymous Mimi and Phil Allin's

### Anna Bermudez

Barbara Barraza  
Elena Brokaw and Pat Miller  
Patti Channer  
Betsy Chess  
Catherine DeLaTorre  
Barbara Dupree  
Jeanne Hunt  
William and Elise Kearney  
Marcia and Brad Marcus  
Kate McLean  
Vivian and Tom Nelson  
Arturo and Amada Perez  
George Sandoval  
Bruce and Joyce Schoppe  
Deya Terrafranca  
Sylvia Wilkholm

### The Brokaw Family

Julie Ward

### Elena M. Brokaw

Martha Jaffe  
William and Elise Kearney  
Al and Petra Lowe  
Kate McLean  
Barbara Meister

### Canalino and Aliso Schools

Jamie Persoon

### The Chumash Community

Anonymous

### Andrea Contarino

Penelope H. Barnds  
William and Elise Kearney

### Ivor Davis

David Bayer  
William and Elise Kearney  
Jude Southerland Kessler  
Robert and Ann J. Warnagieris

### Spencer Garrett

Rebecca and Jeffrey P. Smith

### Friday Gretchen

David and Jessica Goldstein  
William and Elise Kearney

### Tish Harris's 80th Birthday

William and Elise Kearney

### Patricia "Anne" Hendrickson

Carol Peterson

### Phoebe and Jacob Hopps

Lydia Hopps

### Zoe, Lily, and Vincent Johnson

Jennifer Johnson

### Bill and Elise Kearney

Nancy and Spencer Garrett  
Martin and Maryann LaVere  
Al and Petra Lowe  
Brian and Judy Robertson

### Linda Kimbrough, Docents

#### Volunteer Council President

Elena Brokaw and Pat Miller  
Docent Council of the Museum  
of Ventura County  
William and Elise Kearney

### Rosemarie Magness

Timothy and Elizabeth Sullivan

### Pete Marriott

Ed Russell

### Ken Merideth

Ed Russell

### Kate McLean

Al and Petra Lowe

### Mothers and Daughters of the

#### National Charity League

Jeanne Hunt

### Bill Norin

Julie Fox

### The O'Donnell-Cross Family

Erin O'Donnell

### John and Stephanie Orr

Michael Case  
William and Elise Kearney  
Dr. Bill and Francie Parr  
Dianne and John Ruby

### Jean Ruggles

Joseph Smith

### The Dedication of the Richard R.

#### Rush Hall at CSUCI

Elena Brokaw and Pat Miller

### Richard Rush's 80th Birthday

Vanessa and Jim Bechtel  
William and Elise Kearney

### Jeffrey Smith

William and Elise Kearney  
John and Stephanie Orr

### Charlie Snyders

Elena Brokaw and Pat Miller

### Topa Topa Flywheelers Tractor

#### Club, Camarillo

Fern and Lynn Vacca

### Teri Willson

Lorelle Dawes

### Dr. Richard Yao's Appointment

#### as President of CSUCI

William and Elise Kearney

### Mike Zmaj

Tricia Murdoch



INCOME	2022	2023
Grants	\$265,000	\$647,000
Donations	\$1,270,000	\$1,105,000
Earned Income	\$191,000	\$335,000
Government Funding	\$438,000	\$422,000
Bequests	\$508,000	\$15,000
Endowment Earnings	\$379,000	\$447,000
(Increase)/Use of reserves	\$(78,000)	\$862,000
<b>TOTAL</b>	<b>\$2,973,000</b>	<b>\$3,833,000</b>

EXPENSES	2022	2023
General	\$512,000	\$573,000
Occupancy	\$256,000	\$254,000
Exhibits and programs	\$253,000	\$773,000
Library and Education	\$43,000	\$35,000
Capital Expenditures	\$27,000	\$32,000
Salaries and benefits	\$1,674,000	\$1,965,000
Other	\$208,000	\$201,000
<b>TOTAL</b>	<b>\$2,973,000</b>	<b>\$3,833,000</b>

\* Other = development expenses, membership program, event facility rental costs, Museum stores, marketing and communications

This financial information is prepared internally and is subject to audit adjustment.

The audited financial statements for these years are posted on the Museum's website when issued by the Board of Directors.

## MESSAGE FROM THE CHAIR OF MVC'S BOARD OF DIRECTORS, WILLIAM KEARNEY



In 2016, I received an urgent call from Esther Wachtell, a long-time volunteer and major donor to the Museum of Ventura County. The museum was at a pivotal crossroads, and Esther urged me to join an exploratory committee to seek innovative and industrious leadership for the museum.

It didn't take long for me to recognize the Museum of Ventura County's far-reaching impact. Its collection is a priceless repository of our community's history—oral histories, photographs, maps, documents, paintings, agricultural implements, historical objects, and personal accounts of significant events, such as the St. Francis Dam collapse and the 1918 flu pandemic. What the Museum has is no more nor less than the heartbeat of Ventura County, and it captures the essence of this vibrant region.

In the past eight years since that phone call, I am proud to say I am fully committed. And I hope that after reading this short summary of the Museum's remarkable impact, you are too.

This is just a glimpse into the incredible work our museum does. As a museum both in and of the community, over 50% of our funding comes from individuals like you and me. Today, I ask you to join me in supporting our museum's vital activities. Your contribution, no matter the size, makes a significant impact on our ability to share Ventura County's history with all.

However you engage, I hope this note urges you to dive deeper into the importance of the museum and our collective history—just like Esther's phone call did to me.

Thank you for your generosity and for being part of this engaged and dedicated community!

With my sincerest regards,

Bill Kearney



## FEELING INSPIRED TO GIVE BACK?

The single most impactful way you can donate to MVC is by becoming a sustaining monthly donor! Sustain our mission and become a member online for as little as **\$6.25 per month**. Your tax-deductible monthly dues enable us to continue championing the stories of Ventura County.

Learn more by visiting our website: [www.venturamuseum.org/membership](http://www.venturamuseum.org/membership)



### MUSEUM OF VENTURA COUNTY

100 East Main Street  
Ventura, CA 93001  
(805) 653-0323

Open Thurs – Sun, 11:00am-5:00pm

Admission:  
Adults \$10 | Students/Seniors \$5  
Under 18 and Members FREE

### RESEARCH LIBRARY AT MVC

100 East Main Street  
Ventura, CA 93001  
(805) 653-0323, Ext. 320

OPEN BY APPOINTMENT ONLY  
Weds – Fri, 11:00am-5:00pm

Admission: FREE



### AGRICULTURE MUSEUM

926 Railroad Avenue  
Santa Paula, CA 93060  
(805) 525-3100

Open Thurs – Sun, 11:00am-5:00pm

Admission: FREE

### ALBINGER ARCHAEOLOGICAL MUSEUM BY THE CITY OF VENTURA

113 East Main Street  
Ventura, CA 93001  
(805) 658-4728

Open Sat – Sun, 11:00am-5:00pm  
Admission: FREE

**Thank you** to MVC's outstanding, passionate, and dedicated staff: Alex Bruzzese, Angie Brinkhoff, Carlos Ortega, Christine Ballestero, Deya Terrafranca, Elena Brokaw, Emma Thorne-Christy, Friday Gretchen-Treur, Hannah Eaton, Hannah Rogers, Heather Williams, John Treur, Joshua Ortiz, L.E. Brown, Leila Benoun Kaseke, Liisa Pynnonen, Loribeth Gregory-Beck, Michelle Hoover, Miguel Aguiar, Renee Tallent, Samuel Ponce, Shelley Littleton, Suzanne Soprano, Thomas Blood, and Violet Loza.

# SELECT PROGRAMS COMING IN 2024

We hope you will join us at our Ventura and Santa Paula campuses for these exciting programs in 2024:



## **INNOVISION** - Ventura County Artists to Watch

**Opens June 8, 2024**

Museum of Ventura County

*InnoVision is an interactive exhibition that highlights the work of nine Ventura County artists. Through their innovative use of common materials, they create installations that reflect their personal visions and views of current issues.*



## **MASTERS** - From the Museum of Ventura County Collection

**Opens June 8, 2024**

Museum of Ventura County

*Masters from the Museum of Ventura County Collection celebrates the extraordinary artistic legacy of seven artists in MVC's collection who have significantly shaped Ventura County's art history and achieved international acclaim.*



## **ARTISTS & AMPLIFIERS FÊTE** (Feat. Bonita C. McFarland Scholarship for the Visual Arts 2024 Award Ceremony)

**Saturday July 20, 5:00-7:30pm**

Museum of Ventura County / Members ONLY

*This members-only fête celebrates our Bonita C. McFarland visual art scholarship award winners in an elevated garden party with private gallery tours, a silent auction, and comments from the Chief Curator.*



## **9TH ANNUAL LABOR DAY TRACTOR FAIR**

**Monday September 2, 11:00am-2:00pm**

Agriculture Museum

*The annual Labor Day Tractor Fair returns to encourage sustainable practices and motivate the next generation to explore agricultural careers.*



## **WINTER SOLSTICE STORYTELLING FESTIVAL**

**Sunday December 15, 2:00-4:00pm**

Museum of Ventura County

*A vibrant Winter Solstice Festival with our Chumash communities, this event is designed to honor tradition, culture, and storytelling in a way that brings history to life.*