



MUSEUM ^{of}
VENTURA
COUNTY

YEARS IN REVIEW
2022-2023

CURIOSITY • COMPASSION • CONNECTION

Message from The Barbara Barnard Smith Executive Director, Elena Brokaw



Over a century ago, the Museum of Ventura County was founded: partly as an homage to the people and cultures who had shaped the community as it stood in 1913, and partially as a cabinet of curiosities—a collection of souvenirs and curios meant to evoke awe.

The Museum of Ventura County has changed a lot since its inception. While we still aim to inspire wonder and curiosity in everyone we reach, our institution exists today in order to change the world. And yes, we know that sounds lofty. But we are certain that, with your help, we can nurture big changes.

How do we plan on achieving our ambitious goals? Everything starts with our belief that by bringing our collective history to light, we will spark curiosity, instill compassion, and foster connection. With every interaction we facilitate and every person we reach, we see how these elements of individual expression can lead to positive, community-wide change.

To catalyze emotions into actions, we aim to illustrate that the world, as we know it, is not fixed. It has changed before, and it will change again. We want our visitors to leave with a sense of agency—an awareness that the future is not just something that happens to them. In everything we do, we create and shape the future.

The Museum of Ventura County hopes you will invest in our mission and join us in creating a more connected future. As we invite you to embark on this journey with us, we ask not only for your patronage but for your partnership.

So, we urge you to delve deeper into our digital offerings, to explore our exhibitions, and to consider how you can contribute to our shared vision of a brighter tomorrow. Whether through a donation, a membership, or simply by spreading the word, your support is instrumental in helping us realize our mission.

Together, let's write the next chapter in the story of the Museum of Ventura County—a chapter filled with curiosity, compassion, and connection.

With gratitude,

Elena Brokaw
The Barbara Barnard Smith Executive Director

Our Vision: *Inspiring vibrant communities by connecting the past, present, and future.*

Our Mission: *The Museum of Ventura County, through its collections, exhibits, educational programs and publications, celebrates the history, art, and culture of Ventura County and the Channel Islands.*

MUSEUM of
VENTURA
COUNTY

BOARD MEMBERS



William Kearney,
Chair



Dr. Richard Rush,
Vice Chair



Mike Sedell,
Treasurer



Jessica Arciniega,
Secretary



Al Lowe



Betsy Chess



David Fukutomi



Gabriella
Navarro-Busch



Jim Scanlon



Julie
Tumamait-Stenslie



Leslie Leavens



Sarah
McCarthy-Garcia



Dr. Sevet Johnson



MUSEUM of VENTURA COUNTY

YOUR MUSEUMS



The Museum of Ventura County first opened its doors in 1913 as the Ventura Pioneer Museum. For its first decade, it shared one room with the Chamber of Commerce and Farm Bureau in what was then the County Courthouse. The Museum has come a long way in the last century, and now has multiple sites:

THE MUSEUM OF VENTURA COUNTY IN DOWNTOWN VENTURA

The flagship of the Museum facilities, the downtown Ventura campus has presented programs, exhibitions, and educational activities since its opening in 1977. Situated in the heart of downtown's historic district, the Museum has 3,000 square feet of gallery space, a research library, an events pavilion, an open-air courtyard, plaza, and gardens. These spaces work together to spark curiosity and encourage learning about Ventura County and the region.

THE RESEARCH LIBRARY AT THE MUSEUM OF VENTURA COUNTY

MVC's Research Library houses a vast collection of photographs, maps, oral histories, family papers, and other archival records that together, tell the story of our community. The Research Library is free and open to the public by appointment—its online archive allows researchers access to digitized materials from anywhere in the world.

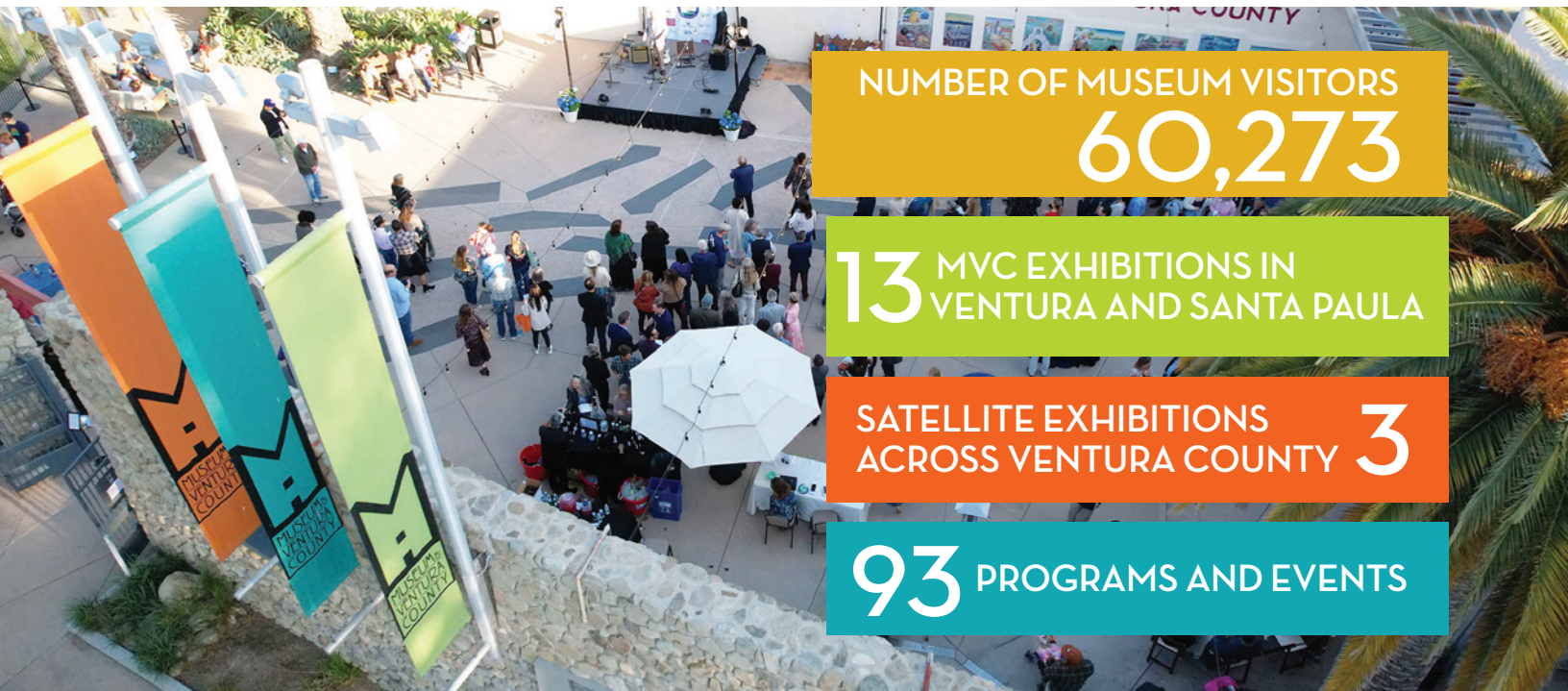
THE AGRICULTURE MUSEUM IN SANTA PAULA

Located in the historic Mill Building in downtown Santa Paula, the Agriculture Museum is a compelling tribute to the region's farming and ranching history, exploring the legacy of the farmers and innovators who shaped the local landscape. This campus engages visitors with its rotating community-focused exhibitions, broad collection of farming equipment, raised garden beds, a native plant garden, a live observation beehive, and interactive, agriculture-focused activities for children.

MVC'S ONLINE CAMPUS - AVAILABLE WORLDWIDE

Founded in 2020, the expanded online presence through MVC's website and social media platforms acts as the Museum's newest "campus." With virtual tours and exhibitions, lectures and talks hosted digitally, history blog posts, educational resources, digital jigsaw puzzles, and more, the Museum's online offerings bring our community together to celebrate art, history, and culture from anywhere across the world.

AT A GLANCE:
2022-2023 HIGHLIGHTS



NUMBER OF MUSEUM VISITORS
60,273

13 MVC EXHIBITIONS IN
VENTURA AND SANTA PAULA

SATELLITE EXHIBITIONS
ACROSS VENTURA COUNTY **3**

93 PROGRAMS AND EVENTS

RESEARCH
REQUESTS **1,513**

PHOTOS
DIGITIZED **2,387**

CUBIC FEET
OF RESEARCH
MATERIALS
PROCESSED **600**

DIGITAL
JIGSAW
PUZZLES **284**

IN-PERSON RE-
SEARCH LIBRARY
APPOINTMENTS **439**



NUMBER OF MUSEUM MEMBERS **1,043**

EXHIBITIONS UNVEILED IN 2022-2023

- Always Keep Creating:** *The Resiliency of Carol Rosenak* MVC
- Chromatic:** *The Museum in Six Colors* MVC
- All That Glitters is Not Gold** MVC
- Behind the Curtain:** *An Insider's Look at The George Stuart Historical Figures®* MVC
- Going Wild** MVC & ONLINE
- Pollination Investigation –** *The Essential Role of Pollinators in the Natural World* AG
- Finding the Light:** *Works from MVC's Permanent Collection* MVC
- Proximity to Water:** *Works from MVC's Permanent Collection* MVC
- Spin Cycle:** *Unfolding the Science of Laundry* MVC
- Murder of Tom More:** *A True Crime Story* MVC
- Nosferatu:** *A George Stuart Historical Figures® Exhibition* MVC
- Winter:** *A George Stuart Historical Figures® Exhibition* MVC
- Ventura County, The Place We Call Home** AG & SATELLITE LOCATIONS



ATTENDANCE OF
SCHOOL TOURS **5,111**

NUMBER OF SCHOOL
DISTRICTS SERVED **12**

NUMBER OF K-12
SCHOOLS SERVED **44**

NUMBER OF INTERNS **18**

NUMBER OF
VOLUNTEERS **78**

PROGRAMS AND EVENTS 2022

JANUARY	MVC Insider: Season 3 Workshop: Legal Issues for Artists: Protecting Your Works Ivor Davis: Up Close and Personal with Harry Benson	ONLINE MVC MVC
FEBRUARY	Family Fun Day: Celebrating Black History Month Bilingual Storytime with Ventura County Mobile Library	AG MVC
MARCH	Nowruz: Persian New Year Celebration Ivor Davis: Up Close and Personal with Dianne Lake Documentary Screening: <i>Margaret Garcia: An Intimate Portrait</i> Bilingual Storytime with Ventura County Mobile Library	MVC MVC MVC
APRIL	Documentary Screening: <i>Mariposas del Campo</i> Monoprint Workshop with Margaret Garcia and Bonnie Lambert Documentary Screening and Wildfire Awareness: <i>Not If, But When</i> Ventura County Flower and Weed Show and Exhibit Ivor Davis: Up Close and Personal with Bob Eubanks Author Talk: <i>El Oz</i> by David Damian Figueroa, with Dolores Huerta	MVC MVC MVC AG MVC AG
MAY	Poetry Reading: Poesia Para la Gente <i>Save the Pollinators: A Youth-Led Environmental Restoration Project</i>	MVC AG
JUNE	Ivor Davis: Up Close and Personal with Steve Binder <i>All That Glitters Is Not Gold, Always Keep Creating,</i> and <i>Chromatic</i> Exhibition Openings Bilingual Storytime with Ventura County Mobile Library	MVC MVC MVC



JULY	Life Drawing Sessions with Cathy Barroca and Barbara Brown Play-Well TEKologies LEGO Summer Camp	MVC MVC
AUGUST	Bilingual Storytime with Ventura County Mobile Library Play-Well TEKologies LEGO Summer Camp National Honey Bee Day Event Book Launch: <i>Arty's Amazing Accordion</i> by Amada Perez <i>Going Wild</i> Exhibition Opening Reception	MVC AG AG MVC MVC
SEPTEMBER	Bilingual Storytime with Ventura County Mobile Library 8th Annual Labor Day Vintage Tractor Fair	MVC AG
OCTOBER	Oaktober: A Celebration of Oaks and Native Plants with Ventura Land Trust Local History Happy Hour with John Krist California Native Plant Society's Plant Sale U.C. Master Gardeners: Winter Vegetable Gardening Workshop <i>Dia de Los Muertos</i> Altar-Building Session <i>Dia de Los Muertos</i> Celebration Ivor Davis: Up Close and Personal with Joe Sohm	MVC AG AG AG AG AG MVC
NOVEMBER	27th Annual De Colores Music & Art Festival Ivor Davis: Up Close and Person with David Leaf	MVC MVC
DECEMBER	Las Posadas Procession with De Colores Multicultural Folk Art Holiday Sip n' Shop at MVC's Boutique	AG MVC



2022 PROGRAMS AND EVENTS FUNDED IN PART BY:

- Ventura County
- National Historical Publications and Records Commission
- Farm Credit West
- City of San Buenaventura
- Heritage Fund at VCCF
- Pierpont Racquet Club
- John Hammer Family
- Chrisman Estate Company
- Finch Family Foundation
- Harriet H. Samuelsson Foundation
- EJ Harrison and Sons
- Hoffman/Haley Marina Village
- Charles D. and Mary A. Bauer Foundation
-
- Busch Family Foundation

BRIDGE BUILDER *Luncheon 2022*

Honoring
*The Extended Families of Isabel Winemiller
and William Dewey Hobson*

In 1854, William Dewey Hobson and his wife Isabel Winemiller Hobson moved to what would become the city of San Buenaventura, and changed the future of Ventura County forever. Almost two centuries later, in July 2022, the Museum celebrated the accomplishments of seven generations of the Hobson family. At a special gathering at the home of Julia Campbell Namba in Hobson Heights, 200 Museum supporters gathered to dine, dance, and appreciate the achievements of this incredible family.



MUSEUM of
VENTURA
COUNTY

OPENING OF THE ESTHER AND THOMAS WACHTELL FAMILY GALLERY

When Esther and Tom Wachtell moved to Ventura County in the 1990s, they quickly discovered the Museum of Ventura County. Esther in particular was impressed with the breadth and depth of the collection, and in the ensuing three decades has worked to ensure that the collection is protected and shared with the community. In recognition of the family's transformative endowment gift in 2022, the Museum officially opened the Wachtell Family Gallery with *Finding the Light*, the first of an ongoing series of exhibits of work from MVC's permanent collection.



PROGRAMS AND EVENTS 2023

JANUARY	Ventura Land Trust (VLT) Environmental Speaker Series: Marcus Erikson and Anna Cummings of 5 Gyres Institute <i>Finding the Light</i> Exhibition Opening Reception and Dedication of the Wachtell Family Gallery Publication of MVC Journal <i>Bootleggers, Rumrunners, and Blind-Piggers: Prohibition in Ventura County</i>	MVC MVC
FEBRUARY	Reading by California Poet Laureate Lee Herrick U.C. Master Gardener Open House with Dr. James Downer Book Talk: <i>Squatters, Scandals, and Surfing: A History of Rincon</i> by Stephen Bates and Vincent Burns Book Launch: <i>Coyote Rescues Hawk, A Chumash Story</i> by Alan Salazar and Mona Lewis	AG AG MVC MVC
MARCH	Summer Vegetables Gardening Workshop Nowruz: Persian New Year Celebration Ivor Davis: Up Close and Personal with Malcolm McDowell Playdate in the Children’s Garden with Diane Ippel	AG MVC MVC MVC
APRIL	Book Launch: <i>Images of America: Fillmore</i> by Carino Monica Montoya VLT Environmental Speakers Series: Embracing Change through Ocean Exploration with Holly Lohuis The River Next Door: Come Meet Your Neighbor! Ventura County Plants to Know and Grow: An Earth Day Weekend Celebration Regenerative Agriculture Panel presented with Leap Lab: <i>Law and Disorder: An Evening with Michael Bradbury</i>	AG MVC AG AG MVC
MAY	Chumash Plant Knowledge: Presentation by Jam Timbrook, PhD Art in the Garden with Activities by 4H Workshop: Human Resources for Non-Profits Kids Drum Circle: Celebrating International Children’s Day	MVC AG MVC MVC
JUNE	VLT Environmental Speaker Series: Microfibers in our Marine Life with Dr. Andrea Huvar Santa Paula’s LGBTQ+ Youth Pride Celebration 150th Anniversary of Ventura County Kick-off Celebration (VC150) VC150 Memories (VC150) Voices of Ventura County (VC150)	MVC AG MVC ONLINE ONLINE
JULY	Doggie Days: Humane Society of Ventura County	AG
AUGUST	Pop-Up Celebration at Ventura County Fair (VC150) Feast or Flop Video Series (VC150) An Introduction to Obon: A Japanese Summer Festival National Honey Bee Day Event MVC Exhibition Spotlight: Ventura County Land Use Panel Discussion Playdate in the Children’s Garden: Ventura Fish and Wildlife Office	VENTURA ONLINE AG AG MVC MVC



SEPTEMBER	Pop-Up Celebration at Ragtime Revival (VC150) Digital Jigsaw Puzzles (VC150) ArtWalk at MVC Pop-Up Celebration at Banana Fest (VC150) The Santa Clara Valley Wellness Foundation Festival	SIMI VALLEY ONLINE MVC PORT HUENEME
OCTOBER	Family Fair: Mountains to Sea Jubilee (VC150) <i>Ventura County, The Place We Call Home</i> Exhibition Opening (VC150) Music Festival: Mountains to Sea Jubilee (VC150) VLT Environmental Speaker Series: Oak Regeneration	AG AG SANTA PAULA MVC
NOVEMBER	State of the County Address and Reception (VC150) Ventura County Farm Day with Students for Eco Education and Agriculture Pop-Up Celebration and Exhibition Opening (VC150) Small Business Saturday	SIMI VALLEY AG THOUSAND OAKS AG
DECEMBER	Home for the Holidays Holiday Sip n’ Shop at MVC’s Boutique	MVC MVC

2023 PROGRAMS AND EVENTS FUNDED IN PART BY:

- Ventura County
- Finch Family Foundation
- Gene Haas Foundation
- City of San Buenaventura
- Ventura County Credit Union
- TOLD Foundation
- John Hammer Family
- Hoffman/Haley Marina Village
- Williams-Corbett Foundation
- Farm Credit West
- Paul and Anne Leavens Family Fund
- Charles D. and Mary A. Bauer Foundation
- Index Fresh
- Schwemm Family Foundation
- Heritage Fund at VCCF
- TOLD Corporation
- Smith-Hobson Foundation Fund



2023 JUNE - NOVEMBER

THE 150TH ANNIVERSARY OF VENTURA COUNTY



2023 marked the 150th anniversary of the founding of Ventura County. With your support, we engaged the community in 150 days of celebration!



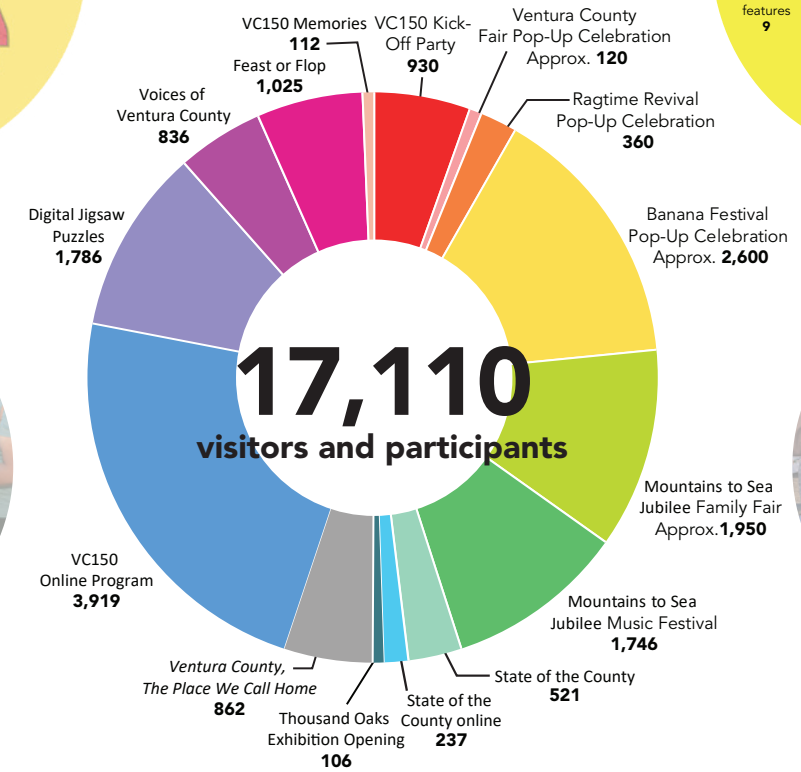
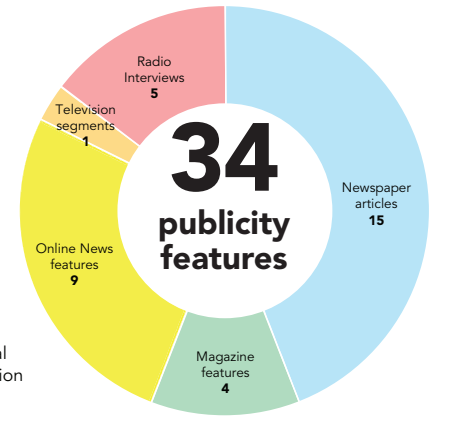
CO-PRESENTING PARTNERS



CELEBRATING 150 YEARS OF VENTURA COUNTY



150
days of celebration

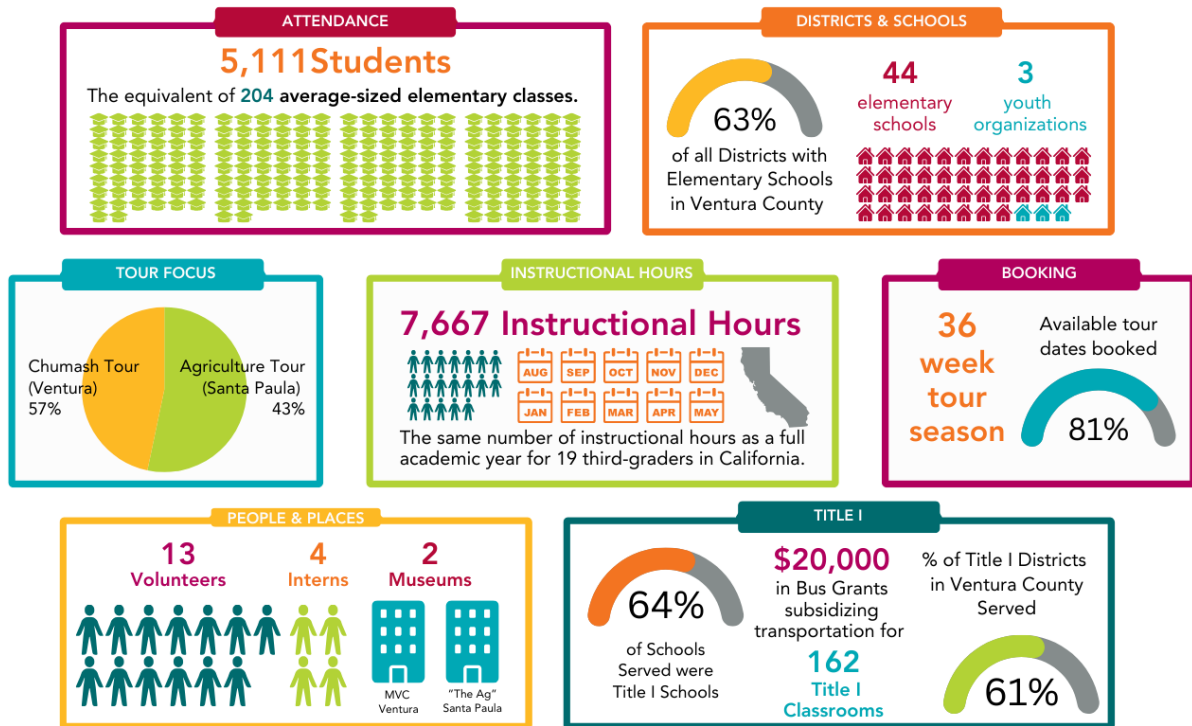


Funding for this series of programs and events provided in part by:



MVC EDUCATION IMPACT REPORT

2022-2023 SCHOOL TOURS



2022 and 2023 were busy years for MVC's elementary school tour programs, booking 81% of all available tour dates and serving 5,111 students from 44 schools across our Ventura and Santa Paula campuses.



BONITA C. MCFARLAND SCHOLARSHIP FOR THE VISUAL ARTS



2023 Bonita C. McFarland Scholarship awardees meet with MVC's Chief Curator Carlos Ortega and members of MVC's Fine Arts Committee at the Bonita C. McFarland Scholarship Awards Reception on June 7, 2023, at the Museum of Ventura County's downtown Ventura campus.

Through the **Bonita C. McFarland Scholarship for the Visual Arts**—initiated by the late Ms. Bonita C. McFarland's dedication to the arts—MVC recognized 12 remarkable emerging artists in Ventura County across the years 2022 and 2023. This scholarship, which splits \$10,000 per year between awardees, aims to celebrate and amplify the arts as a fundamental part of our local community.

2022-2023 SCHOLARSHIP PROGRAM IMPACTS

35 applications

10 finalists

2 honorable mentions

10 high schools reached

4 colleges reached

\$20,000 in scholarships awarded

All 5 Ventura County Supervisorial Districts served

2022 FINALISTS

Billie Bowman, *Ojai*; Emily Kirkland, *Moorpark*; Esmeralda Velasquez, *Ojai*; Grace Morton, *Ventura*; Quincy Unseth, *Camarillo*

2023 FINALISTS

Audrey Abbe, *Ventura*; Alex Lozano, *Simi Valley*; Piper Snowber, *Camarillo*; Anya Spiers, *Thousand Oaks*; Charlotte Scott, *Oak Park*

HONORABLE MENTIONS

Danae Olivares, *Oxnard*; Elora Bacon, *Westlake Village/Oak Park*



Temari balls sculpture by Piper Snowber, 2023 finalist

MEET MVC'S NEWEST TEAM MEMBERS

Discover the names and roles shaping your Museum's narrative. In 2022 and 2023, MVC continued to pay its interns a fair, livable wage and reached pre-pandemic levels of employment. Together, this passionate team works towards a more sustainable, equitable, and connected future.

MVC EMPLOYED **18** SCHOOL-TERM INTERNS:

- Allison Phelps** (San Jose State University), Library and Archives Intern
- Amihan Franada** (Ventura College), Education Intern
- Carla Valdez** (California State University, Northridge), Library and Archives Intern
- Cecilia Lopez** (California Lutheran University), Education Intern
- Chase Woodard** (California State University Channel Islands), Marketing and Communications Intern
- Danielle Tusi** (San Jose State University), Library and Archives Intern
- Douglas Joys** (University of Denver), Library and Archives Intern
- Isabel Cline** (University of California, Los Angeles), Library and Archives Intern
- Jairo Rios Ponce** (California State University Channel Islands), Education Intern
- Jennifer Dawes** (San Jose State University), Library and Archives Intern
- Kelli Couse** (California State University Channel Islands), Library and Archives Intern
- Peter Smilanick** (California State University Channel Islands), Library and Archives Intern
- Rebecca Ritchie** (San Jose State University), Library and Archives Intern
- Samuel Ponce** (California State University Channel Islands), Education Intern
- Stephanie Zager** (University of California, Los Angeles), Library and Archives Intern
- Susana Delgadillo** (University of Washington), Library and Archives Intern
- Vincent Romero** (California State University Channel Islands), Library and Archives Intern
- William MacNeil** (University of California, Los Angeles), Library and Archives Intern



AND **11** NEW EMPLOYEES:

- Alex Bruzzese**, Human Resources Office Manager
- Angie Brinkhoff**, Marketing and Communications Program Manager
- Carlos Ortega**, Chief Curator
- Heather Williams**, Development and Outreach Director
- Josh Ortiz**, Development Specialist
- L.E. Brown**, Development Manager
- Loribeth Gregory-Beck**, Senior Education and Engagement Manager
- Michelle Hoover**, Visitor Experience Associate
- Samuel Ponce**, Visitor Experience Associate
- Thomas Blood**, Events and Facilities Associate
- Violet Loza**, Visitor Experience Associate

CELEBRATE MVC'S COMMUNITY COLLABORATORS

MVC proudly recognizes its dynamic collaborators and committed volunteers, whose impact on the community is immeasurable. Across 2022 and 2023, MVC remained dedicated to facilitating meaningful connections, championing diverse narratives, and creating lasting educational and cultural experiences for all.

MVC COLLABORATED WITH **64** COMMUNITY PARTNERS:



- Alan Salazar and Mona Lewis • ANIMO Theatre Company • Art Trek, Inc. • Arte & Cultura Collective of Santa Paula • Ballet Folklorico Bell Arts • Barbara Brown • Bell Arts Factory • Blanchard Community Library • Blue Ridge Honey • Breast-feeding Coalition of Ventura County • C.R.E.W. (Concerned Resource and Environmental Workers) • California Lutheran University • California Native Plant Society • California State University Channel Islands • Camarillo Ranch Foundation • Carina Monica Montoya • Cathy Day • Channel Islands Maritime Museum • City of Ventura • David Damian Figueroa • De Colores Multicultural Folk Art, Inc. • Diversity Collective Ventura County • Flamenco 805 • Focus on the Masters Arts Archive & Library • Harry Selvin Orchestra • hi stok'oy hil xus Chumash Cultural Group • Humane Society of Ventura County • Inlakech Cultural Arts Center/Lucha • Interfaith Council • Iposi Women Veteran and Two-Spirit Native Drum • Ivor Davis • John Krist • Margaret Garcia • Memorias Tejidas • Mike Bradbury • New West Symphony Association • Niñas del Maíz • Olivas Adobe Historical Interpreters (OAH)

- Open Door Studio • Pedro Chavez • Play-Well LEGO • San Buenaventura Friends of the Library • Santa Clara River Conservancy • Santa Clarita Organization to Protect the Environment (SCOPE) • Santa Paula Bee Club • Santa Paula Chamber of Commerce • Santa Paula Concert Series at the Universalist Unitarian Church • Santa Paula Historical Society • Santa Paula Latino Town Hall • Santa Paula Theater Center • Simi Valley International City of Peace • Stephen Bates and Vincent Burns • Studio Channel Islands • The Laby Harmony Project of the New West Symphony • The Santa Paula Police Department • Togen Daiko • Topa Topa Flywheelers • University of California Division of Agriculture and Natural Resources & University of California Master Gardeners • VC Mobile Library • Ventura County Agriculture/Weights & Measures • Ventura County Community College District • Ventura Fish and Wildlife Office • Ventura Regional Fire Safe Council • Vita Art Center

AND WORKED ALONGSIDE **78** VOLUNTEERS:

DOCENTS AND VOLUNTEERS:

- Alberta Word • Andy Ludlum • Barbara Dupree • Barbara Hilburn • Barbara Laubacher • Betsy Chess • Bob Delaney • Carole VanOrsdol • Cherie Brant • Glenda Cardona • Jane Blackman • Jean Hefter • Jeanne Hunt • Joyce Cantrell • Joyce Schoppe • Judy Gilliard • Judy Hodson • Kathy Abbott-Mayer • Kathy Franklin • Kathy Ginsberg • Kathy Shearer • Kris Olson • Linda Hadlen • Linda Kimbrough • Linn Butler • Marilyn Hilton • Mark W. Capehart • Mary Stewart • Mary Volpe • Merle Oberg • Mimi Allin • Robert Tovas • Roberta Cordell • Robin Lamar • Royce Hill • Sandra Sanders • Sandra Tovas • Vivian Nelson

COMMITTEE MEMBERS:

- Banks Pecht • Barbara Barraza-Ordonez • Bill Kearney • Caryn Bosson • Catherine De La Torre • Chuck Cohen • Cliff Rodrigues • David Fukutomi • Doreen Villanueva • Eric Boys • Frank Barajas • Gabriella Navarro-Busch • George Sandoval • Hector Guerrero • Jackie Bermudez • Jessica Arciniega • Jim Scanlon • John McConica • John Orr • Jorge Corralejo • Jose Alamillo • Joyce Chavez • Kate McLean • Lori Sanchez • Dr. Maria Munguia • Mike Sedell • Monica Frazier • Peter Zierhut • Ray Vargas • Dr. Richard Rush • Rick Castaniero • Roberto Vargas • Rose Fields • Sally Yount • Sue Chadwick • Tom Wolfe • Tomas Almaguer • Tricia Murdoch • Vanessa Acosta • Yenelli Law

ENDOWMENT FUNDS

CHRISTINA ALLISON FUND

Supports operational priorities as identified by the Board of Directors. Established by bequest 2019.

LILA ATKISSON FUND

Supports the cataloging, digitization, and preservation of the Library's visual print collection. Established 2021.

BERRY RESEARCH LIBRARY FUND

Supports the acquisition, conservation, storage, display, and accessibility of historical library materials. Established 2006.

FORUM OF THE ARTS ENDOWMENT FUND

Supports art installations and projects at both Museum campuses. Established 1990.

BONITA C. MCFARLAND FUND

Supports the purchase and exhibit of fine art, promotes appreciation and awareness of art, and awards one or more scholarships annually to art students. Established 1990.

KAREN AND TOM PECHT FAMILY FUND

Supports operational priorities, as identified by the Board. Established 2018.

MIRIAM SCHWAB FUND

Supports operational priorities as identified by the Board. Established by bequest 2018.

FRED W. SMITH GALLERY FUND

Supports the purchase, maintenance, and restoration of the Museum's collection of George Stuart Historical Figures®, and/or repairs and improvements to the Fred W. Smith Gallery. Established 1992 by Barbara Barnard Smith and Helen M. Smith.

SMITH-HOBSON FAMILY COLLECTIONS MANAGER FUND

Supports the Collections Manager position. Established 2019 by Jeff Smith, Marilyn Cassidy, Barbara Stupay, and Greg Smith.

THE BARBARA BARNARD SMITH MUSEUM OF VENTURA COUNTY EXECUTIVE DIRECTOR FUND

Supports the Museum's long-term stability by providing funding for its Executive Director position. Established 2017.

HARDISON KIMBALL THILLE FAMILY FUND

Supports operational priorities as identified by the Board. Established 2017.

TOM AND ESTHER WACHTTELL FAMILY FUND

Supports the exhibit of works from the permanent collection. Established 2018.

HELEN YUNKER COLLECTIONS PRESERVATION FUND

Supports the Museum Research Library and Collections Department, and exhibits materials from these areas. Established by bequest 2018.

MUSEUM OF VENTURA COUNTY ENDOWMENT FUND

Supports Museum operations. Established 2001.

MUSEUM OF VENTURA COUNTY—AGRICULTURE MUSEUM ENDOWMENT FUND

Supports the Agriculture Museum. Established 2019.

ENDOWMENT FUND CONTRIBUTORS

We thank the many generous donors who have made contributions to the Museum of Ventura County Endowment Fund:

Arthur Bliss and Toy White	Martin V. and Martha K. Smith Foundation
Mr. & Mrs. Robert F. Brown <i>In memory of Bob and Betty Pfeiler</i>	Brianne McGrath
Nancy Gallagher	Barbara S. Meister <i>In memory of Larry Meister</i>
Nancy and Spencer Garrett	Mr. & Mrs. John J. Menne
Index Fresh, Inc.	John and Stephanie Orr
William and Elise Kearney	Andrea Pfister <i>In memory of Edith Hobson Hoffman</i>
James Lloyd-Butler <i>In memory of Cynthia M. Lloyd-Butler</i>	Allan M. Pinkerton Family
Patrick Lloyd-Butler	Janice Petit Willis

Leave your legacy with a planned gift. It can be as simple as naming the Museum of Ventura County as a beneficiary in you will with a gift of \$1,000 or above. If you are interested in remembering the Museum in your trust or estate, please contact MVC's Development Team at (805) 653-0323, Ext. 330.

MUSEUM of
VENTURA
COUNTY

THANK YOU TO OUR SUPPORTERS

The Museum of Ventura County gratefully acknowledges these individuals, foundations, organizations, and businesses for their generous support of the Museum.

\$200,000 and above

City of San Buenaventura
County of Ventura
TOLD Foundation
Esther Wachtell

\$50,000 to \$199,999

Barbara Barnard Smith Museum of Ventura County Executive Director Fund
Bonita C. McFarland Fund
The Charles D. and Mary A. Bauer Foundation
Helen Yunker Collections Preservation Fund
John Hammer Family
William and Elise Kearney
National Historical Publications & Records Commission
John and Stephanie Orr
Dorcas Thille
The Heritage Fund, Ventura County Community Foundation
Janice Willis

\$25,000 to \$49,999

Anonymous
Berry Research Library Endowment Fund
California Small Business COVID-19 Relief Grant Program
City of Santa Paula
City of Simi Valley and Simi Valley Chamber of Commerce
Robert Delaney
E.J. Harrison & Sons Inc
Harriet H. Samuelsson Foundation
Limoneira Company
Meissner Corp.
Port of Hueneme, Oxnard Harbor District
Smith-Hobson Family Fund
Smith-Hobson Foundation Fund
The Gene Haas Foundation
TOLD Corporation
Ventura County Community College District
Ventura County Credit Union
Wilson Family Fund

\$10,000 to \$24,999

Mimi and Philip Allin
Amgen Foundation Inc.
James and JJ Birkenshaw
Elena Brokaw and Pat Miller
Elizabeth Bugg
California State University Channel Islands
City National Bank
Community Memorial Healthcare

Faria Family Fund
Farm Credit West
Bill Faulkner
Finch Family Foundation
Anthony Fowkes
Nancy and Spencer Garrett
John and Margaret Given
John Hofer and Hofer Enterprises
Hoffman/Haley Marina Village, LLC
Leslie Leavens and John Krist
Carolyn Menne
Linda and Walter Morgan
Patagonia
Paul and Anne Leavens Family Fund
Karen and Tom Pecht
Andrea Pfister
The Pidduck Family
Dr. Richard Rush
Schwemm Family Foundation
Gregory and Shelley Smith
Rebecca and Jeffrey Smith
Union Bank

\$5,000 to \$9,999

Aera Energy, LLC
Al Lowe Construction, Inc.
AssuredPartners of California Insurance Services, LLC
AT&T
Brooke Avishay
Bank of America
Trisha Botten
Brighton Management
Ellen Brokaw
Brokaw Nursery, Inc.
Busch Family Foundation
Californians for Energy Independence
Charter Communications
The Becker Group, Inc.
Betsy Chess
Chrisman Estate Company
City of Thousand Oaks
Clean Power Alliance
Freddie Contarino
Driscoll's
Katherine and Michael Enright
Ferguson, Case, Orr, Paterson LLP
David and Jennifer Fukutomi
Rod Gilbert and Kaley Moore
Craig and Judy Hodson
Index Fresh, Inc.
Irene Cummings Hostetler
Endowment Fund
Kirby Subaru

John and Carol Lamb
Kate McLean and Steve Stone
Montecito Bank & Trust
OFI Property LLC
Pierpont Racquet Club
Lynn and Edward Poole
Puretec Industrial Water
Robert Calder Davis, Jr. Arts Fund
Scott Family Foundation
Mike Sedell
The Sence Foundation
Sidney Stern Memorial Trust
Southern California Edison
Mary Stewart
Edward Summers
TOArts
VCMHA Smith Gallery Endowment Fund
Ventura College Foundation
Virginia Beck Davis Trust
Williams-Corbett Foundation

\$1,000 to \$4,999

Altrusa Club of San Buenaventura
Dr. Albert Amorteguy
Jessica Arciniega and Tomas Hernandez
Jill and Edward Banman
Richard Barbar
Barbara Barraza and Alberto Ordonez
David Bayer
Mary Bergen
Danielle Bonnici
John and Cherie Brant
Will Brokaw
Brokaw Ranch Company
Susan and Gregory Brown
Marla Brown
Gerry Browning
Gary and Linn Butler
Nina Butler
California Lutheran University
Allen and Marilyn Camp
Claire Carty
Sonia Cervantez
Suzanne Chadwick
Patti Channer
Joseph and Valerie Chrisman
James Chrismen
Mary Ann Cohen
Todd and Cheryl Collart
Conejo Recreation & Park District
Conrad N. Hilton Foundation
Dr. and Mrs. Thomas R. Coultas
Dave and Jeanette Curci
Milton and Heather Daily

DJ'S California Catering, Inc.
Docent Council of the Museum of Ventura County
Marcia Donlon
Ann Donlon
Nan Drake
Bobbi and Donald Dufau
Linda Dullam
Linda and John Edison
JoAnn Evans
Faria Family Foundation
Fred and Susan Ferro
Diane Flynn
Forum of the Arts Endowment Fund
Howard Gabbert
Gold Coast Transit
Jurgen and Gerry Gramckow
John Moffatt and Elizabeth Broome Grether
Kathy Grunewald
Linda Hadlen
Jim Harris
James Harrison
Cheryl and Dennis Heitmann
Carolyn Hertel
Thomas and Genevieve Hinkle
Hinricher, Douglas & Porter, LLP
Lydia Hopps
Housing Trust Fund Ventura County
Deborah Jackson
Dennis Jurcak
Kaiser Permanente
Derek and Sawsan Knobel
Marie Lakin
Robin Lamar
Deborah Larkin
Al and Petra Lowe
Latitudes Gallery
Thomas and Barbara Laubacher
J. Link Leavens
Alisa Lewis
Limoneira Foundation Fund
Terri and Mark Lisagor
Dorothy Loebel
James and Cynthia Ludwig
James Maddux
John McConica
Robert and Della McCord
Brianne McGrath
Beverlee McGrath
Dianne and Duncan McKay
Barbara Meister
Gretchen and Marshall Milligan
Donald F. and Rena Mills

MUSEUM OF VENTURA COUNTY
Thank You To Our Supporters

Judith Munzig
Mustang Marketing
Myra and Ronald Bank Family Fund
Naturalists at Large, Michael Nesbitt
Gabiella Navarro-Busch and Peter Busch
Gary and Vicki Nichols
Steve Noll
Erin O'Donnell
Ojai Oil Company
Leon Older and Susan Craddock
Drs. James and Linda Peddie
Susan Peterson
Robert and Norma Privitt
Bill and Jane Rader
Peter and Alison Ratcliffe
Brian and Judy Robertson
James and Maureen Scanlon
David Schwabauer and Michael McMahan
Schwabauer Charitable Fund
Mike and Liz Silacci
Stephen and Shirley Simms
Pam and Samuel Small
Joseph Smith
Jennifer Spurl
Martha Spriggs
George Stevens
Timothy and Elizabeth Sullivan
Robert Suskind, M.D. and Leslie Lewinter-Suskind
Tony and Anne Thacher
Jackie Tilton, Index Fresh, Inc.
Barbara and Fred Tomblin
Barbara Topping
Janice Turner
Theresa Tyndall
Vance, Thrift & Biller, LLP
Carole Vanorsdol
Drs. Roz Warner and Michael Hogan
Jane and Edward Waters
Deirdre Weaver
Weingart Foundation
Keith Westcott
Jonathan and Monica White
Sylvia Wikholm
Kelly and Robert Wilmer
Larry and Elizabeth Wolfe
Taylor and Tom Wolfe
Gary and Ann Wolfe
James and Alberta Word
Winston and Joanne Young
Whitten and Sally Yount

\$500 to \$999

Dr. and Mrs. Moustapha and Joanie Abousamra
Tomas Almaguer
Everard and Brooke Ashworth
Steven Bailey
Vanessa and Jim Bechtel
Eugenia Bernacchi
Michael and Melanie Binsley
Arthur Bliss
Robert Bothamley
Grace Brandt
Kathleen Brokaw
Jerry and Linda Bruckheimer
Paul Carlson and Shawn Hanson
Charles Carter
Carol and Bob Cole
Nancy Conant
Jorge Corralejo
Dennis and Sybil Coyner

Jessica Cusick
Lorelle Dawes
Steve and Caroline Doll
The Donlon Family
Marcia Drescher
Richard Esparza and Lauraine Brekke-Esparza
Karen Flock and Dan Long
Richard and Nancy Francis
Margaret Garcia and Rhett Beavers
David and Jessica Goldstein
Linda Greene
John Grether
Marilee Grossheim
Mary Lou and Stephen Harbison
Carol and Logan Hardison
Craig and Denise Held
El Camino High School at Ventura College Campus
Dr. and Mrs. Stephen and Carolyn Hiller
Wayne and Nancy Huff
Jeanne Hunt
Ann Huston
Martha Jaffe
Jay and Melinda Johnson
William Kendricks
Margaret Kimball and William McPheron
Linda Kimbrough
Leah Lacayo
Jeffrey Lambert and Albert Barosso
Martin and Maryann LaVere
Leavens Ranches, LLC
Geri Levine Loe
Anne Lombard
Nelly K. and Laiying Mac
Jacques and Erika Manset
Marcia and Brad Marcus
Atilano Martinez
Laura McAvoy and Sol Chooljian
Joanne McDonald
Sharon McGahan
Mary McGrath
Kellie Meehan
Ernie and Suzanne Melonas
James Monahan and Glenda Cardona
Tricia Murdoch
Kathleen Paulson and Jeff Heath
Ben and Banks Pecht
Peter and Rebecca Percy
John Peterson
Allan Pinkerton
Don and Jane Pinkerton
Portuguese Fraternal Society of America
Press Community Fund
Sandra Quick
Steve and Marlayn Riley
Sabrena Rodriguez and Andrei Bobrow
Elisabeth Rossi
Dianne and John Ruby
Mary Lou Rusnik
Santa Paula Latino Town Hall
Bruce and Joyce Schoppe
Linda Selby
Denise and Jim Sindelar
Susan and Doug Studebaker
Dr. and Mrs. Bruce and Tobey Tabor
Michael Tapia
Deya Terrafranca and Scott Coppersmith
Dr. and Mrs. John and Caroline Thacher
Terrence and Karen Towner
Judith Triem and Mitch Stone
Fern and Lynn Vacca

\$250 to \$499

Charles and Blake Wade
Phil and Suzanne White
Michael and Evelyn Williams
Gary Wolfe
Hiroko Yoshimoto
Frank and Toni Abatemarco
Susan Adamich
Joshua Addison
Betty Anear
Joanna Axell
Sandi Banks
Bryce and Elaine Bannatyne
Yissel Barajas and Jaime Fernandez
Gary and Nancy Barber
Carol Barcellos
Penelope Barnds and Brett Hilton
Regina and James Barnes
Steven and Denice Barr
Illona and Louie Battaglia Aguayo
Bancroft Benner
Jane Blackman
John Blanchard
Caryn and Charlie Bosson
William Bowie
Peter Boyer
Maren Rene Briggs
Robert and Kathleen Brooks
Lamar Bushnell
Victoria Camara
Faye Campbell
James Capito
Bonnie Carlton
Tom and Patty Carmody
Elaine Cavaletto
Gabriel Chacon
Harriet Clune and Richard Stewart
Chuck Cohen
Molly and Ronan Corbett
Roberta and Dan Cordell
Daniel and Janet Crotty
Gregg and Margaret Cutler
Duane Dammeyer
Catherine DeLaTorre
Paul Dentzel
Richard and Ellen Devericks
Patricia and Tom Dodds
Jim and Elaine Donovan
William and Mary Kay Doubek
Patti Douglas
Barbara Dupree
Janet Dwire
Marcia Edwards
Tila and Angel Estrada
Ben Faber
Marcia Fausset
Julie Feely
Michelle Fieler and Kevin Berney
Bryan Fisch and Carrie Rothstein-Fisch
Abra Flores and Edward Burnet
Martha and Scott Flournoy
Kathleen and James Franklin
Mr. and Mrs. Paul Friedrich
Friends Ranches, Inc.
Laura Fullilove
Lynn and Al Geller
Sandra Gelso
Andrew Gilmour and Chris Cozadd
Scott Gordon and Sabine Dodane
John and Judi Gould
Donald and Sandy Greenberg

Stephanie Greger
Liisa Pynnonen
Thomas Hardison
Barbara and Richard Harison
Pam Hawthorne
John and Angela Hecht
Sharon Heintz and Berkeley Brandt
Herbert Hemming
Kathy Henri
William Herbert
Valerie and Eric Herzig
Barbara and Larry Hilburn
Royce Hill and John Perram
Clyde and Lynne Hofflund
Stephen and Margaret Holanov
Charlotte Hoyt
Camille Hunter
Donald Hurley
Zella and Hernan Ibanez
Roxanna Ibarra
Antonio Jankowski
Carlos and Heidi Juarez
Mady Julian
Howard Kaminsky and Susan Wapner
Diane Kanne
Susan and Dan Kaufman
Josh and Mary Kay Kaufman
Linda Kegerreis
Donna Keister
Maggie Kildee
Alan Kirschbaum
Douglas and Linda Knight
Eric and Dolly Knight
Nancy Lander
Vivian Lockard
David Loe and Tisha Longoria
Phillip and Stephanie Lukas
Frances Mahan
Spiro Manos, Spiro's Printing, LLC
Craig and Nancy Marcus
Walter B. Marriott, Jr.
Thomas Marvel
Ruth Maulhardt
Ms. Nancy Maxson
Sharon McAlexander
Rosa McConica
Phil McGrath
Tom and Gerri McMillin
Michael and Linda McTigue
Jay and Jean Midgley
David and Carole Minkin
Frances and Bruce Monroe
Judy Moore
Carl Morehouse and Janna Minsk
Jan Mueting
Deborah and Bob Myman
Frank Naumann
John and Jessica Nava
Alexander Navarro
Carolynn Nicholson
Barbara Niles
William and Linda Nugent
Marietta O'Farrell
Robert Olszewski
Oro del Norte, LLC
Maria Ortiz
Dr. and Mrs. Bill and Francie Parr
Arturo and Amada Perez
Susan Petty
Poinsettia Painters
Michael Powers
William Pruim

Michael Putman and Marge Karney
Liisa Pynnonen
Richard and Jennifer Quint
William and Linda Ramelli
Eleanor Rasnow
Tom Reynolds
Jim Rivera and David Luna
Don Rodrigues
Clifford Rodrigues
Larry and Lisa Rose
Jill Rothstein
Anne Roundy-Harter
Ric and Penny Ruffinelli
Joseph Rund and Alfonso Reta
San Buenaventura Women's Club
George Sandoval
Jaime and Toni Santana
David Schmutte and Janis Ricahrdson-Schmutte
Lawrence and Cindy Schwartz
Louise Sherman
Mary Shore
Timothy Smith
Patrick and Suzanne Squires
Alice Sweetland
Cindy and Gary Tachell
Sheila and Rick Tate
Lawrence Terrafranca
Adam and Alexis Thunell
Ofelya Tonyan
Adela and Ken Trainor
Craig and Sara Jane Underwood
Reinaldo Vargas
Ms. Sharon Vaughan-Rawls
Linda Velthoen
Donald Walker
Robin Wallace and Tim Snowber
Julie Ward
Robert and Ann Warnagieris
Virginia and Jeffrey Weber
John Williams
Casha Yellin
David Young and Jill Forman
Francois and Mary Zugmeyerkas

\$100 to \$249

Kathleen Abbott-Mayer and Theo Mayer
James and Joanne Abing
George Abrams and Martha Symes
Ann Ahlstone
Dr. Jose Alamillo
Wendell and Denise Allen
Elizabeth and Victoria Ammons

Amelia Aparicio
David and Regula Arnosti
Allan and Jyl Atmore
Bill and Julie Aurand
Elizabeth Bachman and Robert Tallyn
Janet Bagby
Annette Baietti
Frank Barajas
Donnie and Deborah Barker
Suzanne Barkley
Joan and Mike Barminski
Angela Barosso
Neal Barr
Chris and Linda Bartelson
Alan and Katherine Batchelder
Mary Jane and Richard Bauleke
Katherine Beattie
Calvin and Gail Beeker
John and Kath-leen Behne
Mary Bemis
Steve Bennett and Leslie Ogden
Bennett's Honey Farm/Chip's Bees
Leila Benoun-Kaseke
Irving Bergman
Bess and Ruben Biason
Brenda and Jerry Bodie
Robert and Jennifer Boelts
David and Alexis Boeshaar
Joel and Chris Crawley
William Boezinger
Sue Bolton
Clark Bond
John and Nancy Borchard
Diane Bovee
Roland Boys
Bob and Mary Braitman
Shelli Brennan
Barbara Brough
Jerry and Gail Brown
Barbara Brown and Bert Van Auker
Lisa Brown
Jerry and Connie Brown
Bruce Kelsey
Mike and Nancy Brucker
Dorothy Brunkan
Alexandra Bruzzese
Donna Burger
Cathy Butter
California State University Channel Islands Library
Virginia Camarillo
Joyce Cantrell
Michael Capesius

Bernard and Madeleine Carteron
Constance Casavan and Heather Tunigold
Michael Case and Maribeth Butler
Roger and Sandra Case
Charles and Maryrose Caspary
Candace and Bret Cassidy
Steve and Linda Cassinelli
Richard Castaniero
Janice Chan
Patti Channer
Yun-Seng Chao
Steve and Jane Chawkins
Jennifer and Yu Cheng (Eric) Chen
Jeffrey Chester and Kathryn Montgomery
Robert and Pauline Chianese
William Chilcutt
Shirley Chiu
Charles Cole
Angela Colicchio
Jack and Wendy Collings
David and Tina Comden
Dale Condra and Carolyn G. Briggs
Roger Conrad
David Cook and Reta Tyree
Stephanie Coray
Mr. and Mrs. Robert Coultas
Edward and Sharon Crane
Charlotte and Michael Craven
Joel and Chris Crawley
Jonra Cross and London Fletcher
Jenny Crosswhite and Daniel Sandoval
Jim and Donna Cruz
David and Tina Cullenberg
Joy and Curran Cummings
Laurie Curtis-Abbe and Mark Abbe
Daniel Danzig
Wayne and Barbara Davey
Kenmere and Robert Davidson
Gary and Bonnie Davis
Christina and Brennan Daw
Jennifer and William Dawes
Carol Dawes
Marsha and Phil De La O
Colleen Delaney
Vera Devera
Marcia Dibble
Andrew and Diane DiConti
Laura DiConti
Jan Dietrick
Beverly Drapeau
Judy and Dan Dugan
Dennis and Jane Dwire
John Echeveste

Chris Effimoff
Sharon Ehrlich
Chuck and Cheryl Engel
Linda England
Karl Enockson
Maureen Erickson
Laura and Victor Espinosa
Todd Everett
Margaret Fall
Kate Faulkner
Ruthann and Jerry Feingold
Joanne Fields
Marge Figurski
Aida Fisher
Judy and Mark Fleischman
Kevin and Stephanie Flint
Mary and Richard Follenweider
Bill and Elaine Fontana
For Your Home Furniture
Rebecca Fox
Dr Stanley and Heidi Frochtzjaj
Johanna Gabbard and Michelle R. Boroski
Lucia Galgano
Richard and Mary Gallagher
Terry Garman and Lyndon Turner
Cameryn Garnett
Liz and Art Gaspar
Ilene and Howard Gavenman
Debbie Gohlke
Lynn and David Goldsbrough
Jovitajay and Stephanie Gonzalez
Josephine and Rosa Gonzalez
Stanley Gordon
George and Christine Graham
Donald Grainger
James and Judith Graves
Gary and Valerie Gray
Lester Gray
Judy Greycloud
Carol Griffin
Jeffrey Grimes
Sylvia Griswold
Hector Guerrero
Yvonne Gutierrez
Toni Guy
Margo Haas
Douglas Halter and Randy Encinas
Annie Hankinson
Margaret Harris
Harvey and Jessica Harris
Luisa Haskell
Rick Hayes and Kathy Sage
George and Christine Heavican

MUSEUM OF VENTURA COUNTY
Thank You To Our Supporters



MUSEUM OF VENTURA COUNTY
Thank You To Our Supporters

MUSEUM OF VENTURA COUNTY
Thank You To Our Supporters

Sanger Hedrick
Jean Hefter and Dana Park
Dave and Kathy Henri
Bill and Pam Hicks
Kay Hill
Ross and Carolyn Hoffman
Mike Hollins
Mary Sue Horgan
Harvard and Helen Horiuchi
Lisa and Darin Hornbaker
Carol Hughes
Tegan Hutchinson
Patrick Hylton
Rosemary Icardo
Maryanne and Frank Irving
Ellen Israel
Liza and David Jacobs
Tammy and Curtis Jensen
Lynn Johnson
David and Tina Johnson
Stanley and Judith Johnson
Thomas Jones
Jue & Associates
Susan and Kaplan and Michael Israel
Joanne Kaplan
Diana and Bill Kelley
Richard Kelman and Patricia McCourt
John and Sheena Kennedy
Jude Kessler
Ann Kidson
Ruth Kilday
Carrie Kim and Mark Sandstrom
Don and Mona King
James Kirkpatrick
Lynne and Robert Klamser
Mrs Susan Kleine
Mary and Peter Kobashikawa
Josh and Suzzi Koenig-Brown
Lynn Krantz
Sarah and Mike Kumazawa
Mary Labarge
Lucien Lacour
Mark Lager
Alan and Nenifa Langville
Erin Larner
Kate and Fran Larsen
Ms Wendy Lascher
Terry and Rick Lee
Kurt Lehnhardt
Fredda Leiter
Jennifer Lenzo

Richard LeRoy
Debra Levine
Karen Lewis
Karen Lewis
Kay Liddi
Carol Lindberg
Timothy and Kathryn Linman
Shelley Littleton and Eleanor Songer
Drs Geoff and Nancy Loman
Kathy Long
Dr. Tracy Long
Dennis and Jeanette Longwill
Laura Lopez and J. Antonio G. Lopez, MD
Jacquie Lovell and Tom Mathews
Patricia Maki
Suzanne Manriquez
Lawrence Manson and Delia Gorey
Kevin and Megan Marble
Jan and Abbe Marholin
Edward and Mimi Maring
Rev. John Martin
Andrea Martin
Betty and Al Martinez
John and Linda Martinez
Steve Mason
Patricia Masterson
Frank and Charaline Maxim
Lois McCampbell
Thomas and Janice McCormick
Sally McCormick
Roz McGrath
Kelly McKisic
Nancy and Darren McMillan
Carol McMullin
Neale and Sue McNutt
Carol Mechanick
Beth and James Medina
Kenneth and Lynn Merideth
Jim and Kitty Merrill
Luke and Michelle Metz
Robert Milazzo and Mary Stanistreet
Gerald and Ana Miller
Ines Monguio
Leaf Monroe
Curt and Jane Montague
Greg Monterrosa
Dr. Diane Moore and Lyn Utsunomiya
Aurora Mordey
Michael Moreau and Florence Yau
Theodora Morris
Chuck and LaDene Morrison

Pamela Mortensen
Kioren Moss
Michael Musser and Cindy Mulhollen
Greg and Margaret Nelson
Vivian and Tom Nelson
Mary Newman
Annette Nino
Michelle Nosco
Margaret November and George Vidacovich
James and Catherine Nye
Merle Oberg
Dr. Rose-Lise Obetz
Michael O'Daniel and Joanne Zivich
Jeff Ohlfs
Thomas E. and Mary M. Olson
Linda O'Neill
Bob Orlando
Warren and Gail Paap
Kymberley Peck
Monica Pereira
Mr. and Mrs. Rafael Perez
Rain Perry
Carol Peterson
Linda Peterson
Michael Peterson
Petrolog, Inc.
Petru Corporation
Joan and Gary Phelps
Emperatriz Pinedo
Dan and Susan Pinkerton
Arlene Pinkerton
Bill and Michelle Piotrowski
Roberta Pittman
Pleasant Valley Historical Society
Scott and Ginny Powell
Paul and Pauline Powers
Victoria Pozzi
Roy Prince
Jeanne Pruitt
Supervisor Carmen Ramirez
Marianne Ratcliff and Kevin Rainwater
Pat and Susana Reeder
Robert Rich
Dick and Martha Richardson
Mark and Eleanor Richman
Bill and Rayanne Robe
Elizabeth Rodeno
Harmony Rodriguez
Julie and Mathias Romacker
Paul Rood
Barbara Rose

Ursula Rowe
Robin Roy
Richard Rudman
Ed Russell
Zaki and Ann Salahuddin
Chuck and Susan Samonsky
Sallie Sanchez
Luis and Lori Sanchez
Sandra Sanders
Patti and Mike Savage
Karen Savitt
Robert and Alison Sawyer
Timothy Schiffer
Robert Schleef and Priscilla Holms
Ms Debora Schreiber
Joe Schro Alan and Jean Scott
Mary Scott
Susan Scott, Ventura Music Festival
Nicole and Tom Scurrah
Edward Selby
Jonathan Serret
Terry Shain
Shirley Shanahan
Jody Shapiro
Kimberlee Shelton
Lynette Sim
Dan Singer
Doug and Nena Singletary
Jonathan Hamilton and Marisa Solórzano-Hamilton
Annette Solorzano
John Stauffer
Karilyn Steward
Fran Stewart
Robert Stewart
Kenneth Stock and Ann Reynolds
Elle Stockton
Judith Streamer
Margaret Strobel
Michael Stump
Renee Sutton
Kenneth and Karen Swarn
Dr. Michael Swartout
Betty Swift
Melvyn and Judith Swope
Constance Taft
Susan and Rob Talmadge
Carmen Taylor
Greg Thayer and Debra Renick
Shirley Thayer
Jeanne Thompson
Jill Thrasher

Lynne Thurston and Rudolph Kizer
Sidney Tinberg
John Tiszler
Gary and Pamela Tonucci
Totally Local VC
Mary Travis
Treeco, Inc.
Marcia Turner
Mark and Lysa Urban
Robert Valles
Friday Gretchen Treur and John Henry Treur II
Laurie Vanoni
Dr. Roberto Vargas and Rebecca Mendoza
Yvonne Vargas
Leslie Velez
Ventura College Library
Ventura Pacific Co.
Gretchen Vik
Marilynn Viles
Rev. Audrey Vincent
Mary Volpe
Diane and Zioh Von Heyneman
Bruce Walker
Adele Walsh
Michael Ward
Beverly and Kirby Ward
Katherine Warner and Pete Dibble
Robert Warner and Isabel Downs
Jeanne Warren
Linda and Gary Watson
Timothy and Leslie Wawrzeniak
Wanda Wearley
David Weinstein
Teri White and Bob Keenan
Jim Whitney and Janette Daniel-Whitney
Joe and Sarah Wigert
Catherine and Wolfie Wiggins
Roger Wight
Linda and Norman Wilkinson
John Williams
Mel and Danielle Willis
Darrel and Beth Wilson
Cheri Wolfe
Dr. and Mrs. Doug and Caryn Woodburn
John Woolley
Don and Carley Worth
Laura Yanez and David Gonzalez
Jean Yeto
Gerald and Cynthia Yoshitomi
Joanne and Tom Young
Mayor John Zaragoza
Wade and Pat Zimmerman
Wilhelmus and Johanna Zwinkels

\$5 to \$99

Diomedes Abcmxyz
Neal Abramson
Vanessa Acosta
Jane Advani
Jazmin Aguayo
Alyce Akers and Patrick Nichelson
Judi Allen
Michael Almer and Linda Locklear
Lorna Amundson
David and Crystal Anderson
Susan Andrews
James Arellano
Miriam Arichea

Judy Armstrong
Fran Arner-Costello
Mary Arnold
Joan Aronson
Noel Arthur
Kathy Asher
Mark and Linda Bacin
Marie Baez
Nick and Marina Baker
Marion Baranowski
Jeff Barber
Joyce Barger
Suzanne Barnes
Toni Barnett
Susan Barrera
Scott Bartels
B. Bartling
Marie Battle
Barbara Beach and Louise Bond Warren
Ben and Megan Beatie
Stephanie Becerra and Robert Guizar
Daniel Begalla
Christine Beirne
Eric Bergh
Andrea Berrelleza
Connie Biggers
Ken and Sue Birdsall
Janet and Jim Black
Judy Blades
Charlene Blalock-Carlson
Donna Blasius-Pitzler
Bart and Michelle Bleuel
Rick and Debe Bloom
Debbie Blount
Lynda Blue
Ben Borger
Ellen Boudreaux
Jo Bowers
Diana Boydstun
Jean Boyer
Sandy and Will Bredberg
Kathleen Briggs
Karin Brinkley and Chris Paszty
Pamela Briscoe
Carol Brock
Garrett Brown
L.E. Brown
Karen Brown, PhD
Nancy Brown-Molony
Vella Buchanan
Deborah Burns
Cindy Pitou Burton
Carol Bury
Mary Cacciapaglia
Rachel Cahill
Rhonda and Daniel Callahan
Myrna Cambianica
Douglas and Christine Campbell
Liz Campos
Dinora Cardoso
Linda Carson
Eric Carter
Virginia Celeste
Craig Chambers
Patty Chan
Rosemary Chavoya
Yvonne Cherbak
Amy Cherot
Gayel Childress
Jim and Fran Christiansen

Muriel and George Christianson
Helen Chtourou
John Cinatl
Erwin Clahasse
Karen Clark
Marguerita S Cobelens
Bryan Cody
Jill Coffan
Alana Coghlan
Loretta Collet
Jean Collins
Colleen Conway
Susan and Robert Cook
Joan Cook
Daveta Cooper
Lyzette Cornejo
Linda Corrigan
Sandra Crawford
Chris and Paul Crice
Janet and Tom Crozier
Wesley Cullins
David Culton
Sharon Cunningham
Mary and Ray Currence
Suzanne Curtin
Eileen Cusimano and Mary Smith
Harvey and Nellie Cusworth
Nicole D'Amore
Harry Davidson
Patrick and Roberta Davidson
Jackie Davis
Tricia and Gideon Davis
Aimee Jo Davis and Gina Nicholls
Curt and Carolyn Davison
Claudia Davoli
Karen De La Pena
Ben Borger
Ellen Boudreaux
Jo Bowers
Diana Boydstun
Jean Boyer
Sandy and Will Bredberg
Kathleen Briggs
Karin Brinkley and Chris Paszty
Pamela Briscoe
Carol Brock
Garrett Brown
L.E. Brown
Karen Brown, PhD
Nancy Brown-Molony
Vella Buchanan
Deborah Burns
Cindy Pitou Burton
Carol Bury
Mary Cacciapaglia
Rachel Cahill
Rhonda and Daniel Callahan
Myrna Cambianica
Douglas and Christine Campbell
Liz Campos
Dinora Cardoso
Linda Carson
Eric Carter
Virginia Celeste
Craig Chambers
Patty Chan
Rosemary Chavoya
Yvonne Cherbak
Amy Cherot
Gayel Childress
Jim and Fran Christiansen

Tom and Susy Fineman
Wesley Fish
Linda Fisher
Deborah Fitzgibbons
Martin and Marianne Flam
Geraldine Fletcher
Lynn Fogel and Kurt Triffet
Shelly Foote
Michele Foster
Frank Foster and Julie Hedrick
Naomi and Neal Fowler
Mark Fox
Julie Fox
Vanessa Frank
Monica Frazier and Robert McCarty
Linda Frazier
Helen Fredell
Jim Friedman
Fulcrum Arts
Gloria Garcia and Mary Howard
Jim Gardner
Greg Gardner
Kay Giles Michael Mariani
Judi Gill
Teri Gillard
Judy Gilliard
Leyland Gillibrand
Girl Scouts of California's Central Coast
Joan Gomes
Lourdes Gonzalez
Alan Gordon
Grant Brimhall Library
Kim Gregory
Julie Grist
Lynda Gruber
Kathryn and Grant Gullickson
Susan Gunen
Amy and Cassandra Gurrola
Jimmie Guzik
Patricia Halverson-Henas
Susan Hancock and Richard Orne
Nancy Hankinson and Steven Hoffberg
MB Hanrahan
Mary Hansen
Lennie Harris
Linda and Michael Harris
Ruth Hartman
Cynthia Hashbarger
Patricia Havens
Marjorie Hawkins
Becky Haycox and Dylan Smith
Pamela Hazard
Annette Heck
Alyse Heggen
Helen Held
James Heller and Carol Ecklund
Brad Helton
Roman Hernandez
John and Laurel Hewson
Marilyn Hilton
Lynnae Hitchcock and Kevin Gray
Karen Hoffberg and Katherine Freibergs
James Holden
Bruce Holley
Tammy Holmes
Dennis and Arlene Horwitz
Clark and Diane Hubbard
Bruce Hunt
Michael and Laurie Hurst
Eric Hvolboll
Manny Ilasco



Saritha Ivaturi
Julie Jaramillo
Carol Jensen
Helen Johnson and Michael Harrison
Jennifer Johnson
John and Mary Johnson
Susan Johnson
Jennifer Johnson
Gail Johnston
Lana Jones
JJ Jones and Tim Engels
Kathy Julian
Joanne Julian
Debbie Kaskus
Kris and Meenal Kelkar
Mike and Merrie Kelley
Pamela Kelley
Nancy Kellogg
Michael and Linda Kelly
Carol and Sarkis Keochekian
Judy Kerr
Janet Kessler
Taras and Lily Kiceniuk
Andria Kidd
Jo Kirk
Karen and Doug Kirk
Mary Knox
Jay Kosoff
James Koss
Christine Kovell
Carol Kurtz
Elyse Kutz
Marvin Kwit
The Richard Lagomarsino Family
Susanne Lammot, MD
Kris Langabeer
Lou and Eric Langkusch
Jeanne Larocco
Matthew and Alicia LaVerre
Sheila and Herbert Lazarus
Selkie Leggett
Heather and Steven Leonardo
Constance Leshin
Charles Levin
Ellen Lewis
Marie Liebman
Lightning Ridge
Patricia Lindley
Elva and Weston Lindsey
Barbara Lipscomb
Victoria Lloyd
Joyce Lombard
Robert Lopez
Diego Lopez
Los Angeles Public Library
Rockwood Ludes and Susan Crane Ludes
Andrew Ludlum
Shamsi Luna
Jessica and Brad Lunetta
Alicia and Ken Luper
Sherry Lyons
Carlos Magallanes
Trinh Mai
Kathleen and Keith Manion
Lois Manning
Genesis Manzo
Stella Marin-Denny
Alicia Maris
Jo Marsh
John and Frances Marshall

A. Diane Martell
Linda Martinez
Grace Martinez
Eleanor Martinez
Judith Masterson
Robin Matt
Emma Mayer
Gary and Nancy Mazziotti
Edward McCombs
Pat McCormick
Donna McGue
Walter McKinny
Anita McLaughlin
Sean McSherry
Susan Measures
Mary Meeker
Kristen Mello
Stephen Mendel and Sharon Coughran
Forrest Merrill
Trygve Mikkelsen
Patricia and Mathew Miletich
Sherwood Milleman
Judy Miller
Patricia Miller
Denise Milligan
Rosemary Molloy
Sherman Moore
and Pamela Libis-Moore
Moorpark College Library
Kathleen Morris
Jeanette Mueller
Duke Mulholland
Burton and Irene Munger
Dr. Maria Munguia
and Ray Wellman
Cliona Murphy and Jorge Talamantes
Nan and Hal Nachenberg
Sally Narkevic
William and Carolyn Neel
Richard Newsham
John and Leslie Nichols
Gina and Gary Niebergall
William and Patricia Niederst
Marta Norkin
Terry and Nancy O'Brien
Gerald and Joan Olsen
Kris Olson
Helga Ono
Joann Ontiveros
Nicholas Orr
Joshua Ortiz and Bonnie Merrick
Cecilia Ortiz
Steven Ortiz
Frances Osullivan
Shay P.
P.E.O. Chapter FZ
Jean Panelli and John Hill
Theadora Patterson
Laura Pedegana
Jone Pence
Mary Perez-Moreno
Jamie Persoon
Dave Peters and Donna Forry
Lynne Peterson
Gary and Jean Phillips
Fred Phipps and Catheryn Trainer
Ron and Martha Picciotti
Carol Piros
Doris Pittman
Paula Poll

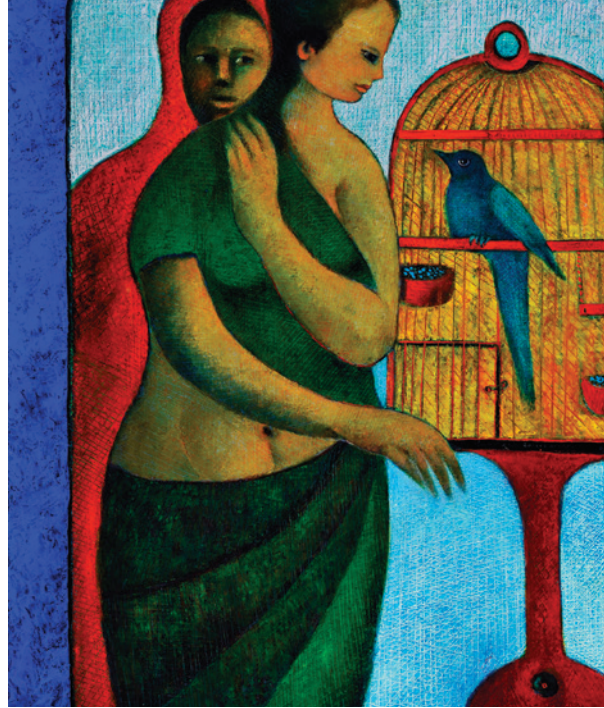
Matt and Pam Portenstein
Rick Power
Roanna Prell
The Honorable Roland Purnell
and Mrs. Peggy Purnell
Nancy Quam
Clinton Quan
Terry Quick and Ronald Perkovich
Sylvia Ramirez
Rick Ray
Juliet Ream
William Reilly and Kimberly Filar
Maria and Michael Richards
Russell Richardson
Nancy Robarge and Michael Deckard
Robert and Sheryl Roberts
George Roberts
Joan Roberts
Delaney Rodriguez
Janet Rodriguez
Donna and Bill Roff
Barbara Roger
Helen Rolls
Paul and Judith Rood
Hope Rosenfeld
Cheryl Ruiz
Edward Russell
Michael Russell
Mary Rydberg
Sylvia Salas
Judith Salazar
Ellen Sanders
Bowen Sarahang
Sora Sarahang
Camille Schaetzel
Donna Schmidt
Patricia Schmidt
Susan Scott
Yvonne Seabold
Irene Seda
Kevin Seelos
Katherine Seifert
Nancy Settle
Tom and Judy Shaw
Jeffery Sherman
Madeleine Sifantus
Jacklyn Simpson and Conrad Schmidt
Sandy Singer
Marianne Slaughter and Dee Press
Bonnie Smith
Dana Smith
Karen Snyder
Andy Sobel and Anne Stehly
Elizabeth Soto
Carol Spector
Jane Spiller
Linda Spink
Carol Spinner and Charlene Digma
Marian St James
Beth Steele
Lori Steinhauer
Carol Stengem
Woddie Stevenson
Harrison Stroud
Robert Sussman
Sandra and Paul Swanson
Kathleen Sweeney
Katherine Sweetser and Allan Frank
Kerry Swift
Ben Tapia
Judith Tarantino

Sandy and Bill Tenenbaum
Arline Tepper-Trister
Maria Teran
Edward Terpening and Michael Estrada
Katrina Titus
Cassandra Tondro
Fernando Torres
Sandra and Robert Tovias
Patricia and Tyler Tugwell
Marie Unini
University of California, Bancroft
Library Acquisitions
Josué Vásquez
Jovita Valdez
Marlene Valdez
Linda Vanakin
Edward Vasquez
Juanita Vega and Seana-Marie Sesma
Juan Venegas
John Vincent
Clint Vocke
Mary Vomund
Madeleine and Sanford Waddell
Karen Wade
Alix Walker
Nan Waltman
Dr. and Mrs. Lee and Christine Wan
Dave Ward
Leslie Warren
Maggie Watson
Lindsay Webster
Rauleen and Tom Weckworth
Marie Weed
Tessa Weeks
Tanya Weimer
Christy and Timothy Weir
Catherine Weisz
Barbara Weitekamp
Alice West
Yvonne Westervelt
Gary Wetzels and Shirley D. Vivion
Bruce and Rebecca Wetzels
Estrella and Teresa Whaley
Dotty Wheeler
Eliane and Rick White
Frederick White
Paul Whitehead
Marc and Julia Whitman
Richard Wibbelmann
Joyce Wiechert
Kathryn Wilbur
Rosemary Wilde
Daniel Wilkinson
Eileen Williams
Teri Willison
Karen Wilson
Sian Winship
Margaret Wise
Mr. and Mrs. Ed Wohlenberg
Sandie Wolfe
Amaranthe Wolff
Jeanette Woodburn
Georgia Wyatt
Patricia Wynn
Camille Yannantuono
Russell and Paula Yermasek
George Zahab
Kay Zetmaier
Lucas Zucker and Amisha Deyong-Dominguez
Valerie Zwirn

IN MEMORIAM: HONORING THE LEGACY OF TWO MVC ARTISTS

As we reflect on the legacies of those we have lost in 2022 and 2023, MVC honors two beloved artists from the collection of the Museum of Ventura County.

OMAR D'LEÓN (1929 - 2022)



Omar d'León, *Freedom of the Sweet Bird of Enchantment, 2000, oil on canvas, 22" x 30". Gift of the artist. In the collection of MVC.*

Nicaraguan artist Omar d'León (born Omar d'León Lacayo y Estrada) leaves behind a profound legacy. Regarded as one of Nicaragua's most distinguished artists of recent decades, Omar gained international acclaim while making Ventura County his home.

Escaping the turmoil of the Nicaraguan Sandinista Revolution of 1979, the artist settled in Camarillo, where he resided until his passing in 2022. In his artistic journey, Omar drew inspiration from the frescos of Pompeii, evident in his distinctive crosshatching technique infused with elements of impressionism. His life was a tapestry of contrasts—comfort and hardship, beauty and destruction, exuberance and lifelessness—all of which are evidenced in his expressive artworks.

GAIL FAULKNER (1947 - 2023)

With an unwavering passion for capturing the natural world in its most tranquil and balanced state, Gail Faulkner's art embodies harmony and equilibrium. Gail's artistic realism transports viewers to lush, serene environments, each moment deliberate yet immediate, where the magic lies in the ever-unfolding array of shapes and colors. From delicate reflections on ceramics, to intricate weaves of antique textiles, to the vibrant array of produce and nature's verdant offerings, Gail's precision in painting blurs the lines between reality and the artistry of watercolor.



Gail Faulkner, *Zapotec Weaving, 2019, watercolor, 21" x 27". Gift of the artist. In the collection of MVC.*

IN MEMORY OF:

Lila Atkisson
Altrusa Club of San Buenaventura

Roberta Ann Baptiste
Elena Brokaw and Pat Miller
Faria Family Foundation
Harvey and Jessica Harris
William and Elise Kearney
Richard Pidduck
Allan M. Pinkerton
Dorcas H. Thille

Genevieve "Genny" Laubacher Basso
Craig and Denise W. Held

Earl Gene Bennett
The Richard Lagomarsino Family

Bernard "Bernie" Bernacchi
Eugenia Bernacchi
William and Elise Kearney

Bob Brown
Ed Russell

Warren Brown
Carol and Bob Cole
Nan Drake
Dorcas H. Thille

Robin Browning
Elena Brokaw and Pat Miller
Gerry P. Browning
Linda M. Hadlen
John and Frances Marshall
Deya Terrafranca

Anthony Caezza
Richard Pidduck

Gail Carter Robinson
Kioren Moss

Pat Carter Bodde
Kioren Moss

Marlene Case Almquist
Jan Mueting

Patti Channer
Elena Brokaw and Pat Miller
Nancy and Spencer Garrett
William and Elise Kearney

Larry Clapper
Gretchen Vik

Eloise Cohen
Elena Brokaw and Pat Miller
William and Elise Kearney

Mr. and Mrs. Coultas
Dr. and Mrs. Thomas R. Coultas

Charles Alan Covarrubias
Elena Brokaw and Pat Miller
Dave and Kathy Henri
William and Elise Kearney
Thomas and Barbara Laubacher

Omar d'León
Elena Brokaw and Pat Miller

Larry Dawes
Lorelle Dawes

David Donlon
Jane and Edward Waters III

Jenny Do
Trinh Mai

Ann Doud
Claire M. Carty

Joseph Doud
Claire M. Carty

Helene Dufau
Craig and Denise W. Held

Jerry Wayne Edmonds
Lori Drysdale
Richard Pidduck

Donald "Don" Kent Facciano
William and Elise Kearney

Ventura County Supervisor John K. Flynn
Elena Brokaw and Pat Miller
Diane Flynn
William and Elise Kearney

Ross Goodman
Elena Brokaw and Pat Miller
Gerry P. Browning
Sylvia Wikholm

Sam Grasso
Richard Pidduck

Anne Shilton Graumlich
Lynn and David Goldsbrough

Larry Joseph Greene
William and Elise Kearney

Marry Deonne "Dede" Greene
William and Elise Kearney

Patricia Lee "Tish" Harris
Elena Brokaw and Pat Miller
William and Elise Kearney

Sharon Harrison
Elena Brokaw and Pat Miller
Nan Drake
William and Elise Kearney
Al and Petra Lowe
Linda Kay Morgan

Calvin L. Havekost
Elena Brokaw and Pat Miller

Edwin L. Hill
James L. Monahan

Randy Hinton
William and Elise Kearney

Bob Holt
Debora Larkin

Keith Allan Hunter
Richard Pidduck

John Keefe
Linda M. Hadlen

Richard Keister
Elena Brokaw and Pat Miller
Donna Keister
Carol and Sarkis Keochekian

W. Richard Keller
James and Cynthia Ludwig

William and Rose Anne Klope
William and Elise Kearney

Mary Leavens Schwabauer
David and Tina Cullenberg

Irene Level
Sylvia Wikholm

James Ormonde Lloyd-Butler
Elena Brokaw and Pat Miller
Suzanne Chadwick
Nancy and Spencer Garrett
Craig and Denise W. Held
Carolyn W. Hertel
William and Elise Kearney
Sharon P. McGahan
Richard Pidduck
Martha A. Spriggs
Dorcas H. Thille
Laurie Vanoni

Patty Lowthorp
Craig and Denise W. Held

Bill Lucking, III
Helen L. Fredell

Bill Lucking, Jr.
Helen L. Fredell

Evelyn Maddux
Debra Levine

Carolyn Joyce Maynard
William and Elise Kearney

John Mathews
William and Elise Kearney

John McCarthy
Ann Ahlstone

Patrick James McCarthy
William and Elise Kearney

John McDougal, Sr.
William and Elise Kearney

The Honorable Charles R. McGrath
Dr. and Mrs. Thomas R. Coultas

Roz McGrath
Elena Brokaw and Pat Miller
Dr. and Mrs. Thomas R. Coultas
William and Elise Kearney

Walter T. McKinny
Craig and Denise W. Held

William C. "Bill" Milligan
Craig and Denise W. Held
Edward W. Russell

Suz Montgomery
William and Elise Kearney
John Hankins

Jerrold Morris
Docent Council of the
Museum of Ventura County

Roger Myers and Kathy Stone
Elena Brokaw and Pat Miller
William and Elise Kearney
Kate McLean

Julia Frances Campbell Namba
Elena Brokaw
Nancy and Spencer Garrett
William and Elise Kearney

Richard Naumann
Jane Kimball Pidduck

Joanna B. Newton
Elena Brokaw and Pat Miller

Vincent James O'Neill, Sr.
Arthur Carlin Bliss, Jr.
Elena Brokaw
Robert D. Coultas
Gregory L. Edison

Maria Anastazia Saviak Older
Leon Older

Betty Pfeiler
Claire M. Carty

Mary Pfeiler
Craig and Denise W. Held

Marry Anne Pinkerton
Craig and Denise W. Held
Richard Pidduck

Supervisor Carmen Ramirez
Jessica Arciniega
Barbara Barraza
Elena Brokaw and Pat Miller
Betsy Chess
Jorge Corralejo
Docent Council of the
Museum of Ventura County
William and Elise Kearney
Leslie Leavens
Roy Prince
Clifford Rodrigues
Dr. Richard Rush
Bruce and Joyce Schoppe
George J. Sandoval
Reinaldo Vargas

Donald William Reeder
Mary Bemis
William Bowie
Craig and Denise W. Held
Richard Pidduck
Allan M. Pinkerton
Joe and Sarah Wigert

The Richardson Families
David Schmutte

Jere Robings
Elena Brokaw and Pat Miller
William and Elise Kearney

Craig Nelson Robinson
Milton and Heather Daily

Lois Sandall
Elena Brokaw and Pat Miller
Gary and Valerie Gray
William and Elise Kearney
Joanne and Tom Young

Patricia "Pat" Scholle
Craig and Denise W. Held

Ann Schreiner Collins
Claire M. Carty

Joseph Collins
Claire M. Carty

Phil and Betty Selby
Edward Selby

Ted Selby
William H. Boezinger
Elena Brokaw and Pat Miller
Steve and Linda Cassinelli
Carol and Bob Cole
Shelly Littleton
Rosena McConica
Marilynn Schmitt Viles
Sharol Vaughan-Rawls

Truman "Glenn" Sipes
Craig and Denise W. Held
William and Elise Kearney
The Richard Lagomarsino Family

Kathleen "Kathy" Sisson
Elena Brokaw
Gerry P. Browning
Docent Council of the
Museum of Ventura County
Linda M. Hadlen
Jeanne Hunt
Carol Jensen
Linda Kimbrough
Jennifer Spurl
Sylvia Wikholm
James and Alberta Word

Richard A. Slater
William and Elise Kearney

Harriet Rae "Midge" Stork
Elena Brokaw and Pat Miller
William and Elise Kearney
Kate McLean

Bruce Montgomery Strathearn
Elena Brokaw and Pat Miller
William and Elise Kearney
Kate McLean and Steve Stone

Esther Tefertiler
Anne Roundy-Harter

Joy Thomas Dodge
Claire M. Carty

Marie McLaughlin Thomas
Claire M. Carty

Richard Charles Utter
Craig and Denise W. Held

Steve Vacca
Ed Russell

Donald Steve Waunch
William and Elise Kearney

Charles Ellery Whipple, II
Elena Brokaw and Pat Miller

David John Whipple
Elena Brokaw and Pat Miller

Robin Ann Whipple Bollinger
Elena Brokaw and Pat Miller

Duane Wikholm
Elena Brokaw and Pat Miller
Docent Council of the
Museum of Ventura County
Linda M. Hadlen
Patricia M. Masterson

IN HONOR OF:

Mimi and Phil Allin's 170th Birthday
Brenda and Jerry Bodie
Elena Brokaw and Pat Miller
Gery Wetzell

Noel Arthur
Anonymous Mimi and Phil Allin's

Anna Bermudez
Barbara Barraza
Elena Brokaw and Pat Miller
Patti Channer
Betsy Chess
Catherine DeLaTorre
Barbara Dupree
Jeanne Hunt
William and Elise Kearney
Marcia and Brad Marcus
Kate McLean
Vivian and Tom Nelson
Arturo and Amada Perez
George Sandoval
Bruce and Joyce Schoppe
Deya Terrafranca
Sylvia Wikholm

The Brokaw Family
Julie Ward

Elena M. Brokaw
Martha Jaffe
William and Elise Kearney
Al and Petra Lowe
Kate McClean
Barbara Meister

Canalino and Aliso Schools
Jamie Persoon

The Chumash Community
Anonymous

Andrea Contarino
Penelope H. Barnds
William and Elise Kearney

Ivor Davis
David Bayer
William and Elise Kearney
Jude Southerland Kessler
Robert and Ann J. Warnagieris

Spencer Garrett
Rebecca and Jeffrey P. Smith

Friday Gretchen
David and Jessica Goldstein
William and Elise Kearney

Tish Harris's 80th Birthday
William and Elise Kearney

Patricia "Anne" Hendrickson
Carol Peterson

Phoebe and Jacob Hopps
Lydia Hopps

Zoey, Lily, and Vincent Johnson
Jennifer Johnson

Bill and Elise Kearney
Nancy and Spencer Garrett
Martin and Maryann LaVere
Al and Petra Lowe
Brian and Judy Robertson

Linda Kimbrough, Docents Volunteer Council President
Elena Brokaw and Pat Miller
Docent Council of the Museum of Ventura County
William and Elise Kearney

Rosemarie Magness
Timothy and Elizabeth Sullivan

Pete Marriott
Ed Russell

Ken Merideth
Ed Russell

Kate McLean
Al and Petra Lowe

Mothers and Daughters of the National Charity League
Jeanne Hunt

Bill Norin
Julie Fox

The O'Donnell-Cross Family
Erin O'Donnell

John and Stephanie Orr
Michael Case
William and Elise Kearney
Dr. Bill and Francie Parr
Dianne and John Ruby

Jean Ruggles
Joseph Smith

The Dedication of the Richard R. Rush Hall at CSUCI
Elena Brokaw and Pat Miller

Richard Rush's 80th Birthday
Vanessa and Jim Bechtel
William and Elise Kearney

Jeffrey Smith
William and Elise Kearney
John and Stephanie Orr

Charlie Snyders
Elena Brokaw and Pat Miller

Topa Topa Flywheelers Tractor Club, Camarillo
Fern and Lynn Vacca

Teri Willson
Lorelle Dawes

Dr. Richard Yao's Appointment as President of CSUCI
William and Elise Kearney

Mike Zmaj
Tricia Murdock



MUSEUM of VENTURA COUNTY FINANCIALS

INCOME	2022	2023	EXPENSES	2022	2023
Grants	\$265,000	\$647,000	General	\$512,000	\$573,000
Donations	\$1,270,000	\$1,105,000	Occupancy	\$256,000	\$254,000
Earned Income	\$191,000	\$335,000	Exhibits and programs	\$253,000	\$773,000
Government Funding	\$438,000	\$422,000	Library and Education	\$43,000	\$35,000
Bequests	\$508,000	\$15,000	Capital Expenditures	\$27,000	\$32,000
Endowment Earnings	\$379,000	\$447,000	Salaries and benefits	\$1,674,000	\$1,965,000
(Increase)/Use of reserves	\$(78,000)	\$862,000	Other	\$208,000	\$201,000
TOTAL	\$2,973,000	\$3,833,000	TOTAL	\$2,973,000	\$3,833,000

* Other = development expenses, membership program, event facility rental costs, Museum stores, marketing and communications

This financial information is prepared internally and is subject to audit adjustment. The audited financial statements for these years are posted on the Museum's website when issued by the Board of Directors.

MESSAGE FROM THE CHAIR OF MVC'S BOARD OF DIRECTORS, WILLIAM KEARNEY



In 2016, I received an urgent call from Esther Wachtell, a long-time volunteer and major donor to the Museum of Ventura County. The museum was at a pivotal crossroads, and Esther urged me to join an exploratory committee to seek innovative and industrious leadership for the museum.

It didn't take long for me to recognize the Museum of Ventura County's far-reaching impact. Its collection is a priceless repository of our community's history—oral histories, photographs, maps, documents, paintings, agricultural implements, historical objects, and personal accounts of significant events, such as the St. Francis Dam collapse and the 1918 flu pandemic. What the Museum has is no more nor less than the heartbeat of Ventura County, and it captures the essence of this vibrant region.

In the past eight years since that phone call, I am proud to say I am fully committed. And I hope that after reading this short summary of the Museum's remarkable impact, you are too.

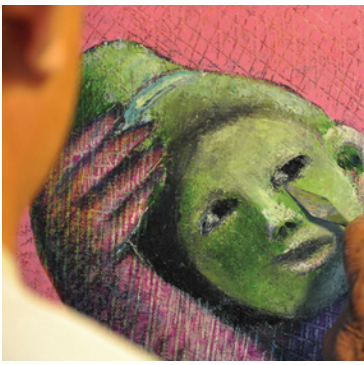
This is just a glimpse into the incredible work our museum does. As a museum both in and of the community, over 50% of our funding comes from individuals like you and me. Today, I ask you to join me in supporting our museum's vital activities. Your contribution, no matter the size, makes a significant impact on our ability to share Ventura County's history with all.

However you engage, I hope this note urges you to dive deeper into the importance of the museum and our collective history—just like Esther's phone call did to me.

Thank you for your generosity and for being part of this engaged and dedicated community!

With my sincerest regards,

Bill Kearney



FEELING INSPIRED TO GIVE BACK?

The single most impactful way you can donate to MVC is by becoming a sustaining monthly donor! Sustain our mission and become a member online for as little as **\$6.25 per month**. Your tax-deductible monthly dues enable us to continue championing the stories of Ventura County.

Learn more by visiting our website: www.venturamuseum.org/membership



MUSEUM OF VENTURA COUNTY
100 East Main Street
Ventura, CA 93001
(805) 653-0323

Open Thurs – Sun, 11:00am-5:00pm

Admission:
Adults \$10 | Students/Seniors \$5
Under 18 and Members FREE

RESEARCH LIBRARY AT MVC
100 East Main Street
Ventura, CA 93001
(805) 653-0323, Ext. 320

OPEN BY APPOINTMENT ONLY
Weds – Fri, 11:00am-5:00pm

Admission: FREE



AGRICULTURE MUSEUM
926 Railroad Avenue
Santa Paula, CA 93060
(805) 525-3100

Open Thurs – Sun, 11:00am-5:00pm

Admission: FREE

ALBINGER ARCHAEOLOGICAL MUSEUM BY THE CITY OF VENTURA
113 East Main Street
Ventura, CA 93001
(805) 658-4728

Open Sat – Sun, 11:00am-5:00pm
Admission: FREE

Thank you to MVC's outstanding, passionate, and dedicated staff: Alex Bruzzese, Angie Brinkhoff, Carlos Ortega, Christine Ballestero, Deya Terrafranca, Elena Brokaw, Emma Thorne-Christy, Friday Gretchen-Treur, Hannah Eaton, Hannah Rogers, Heather Williams, John Treur, Joshua Ortiz, L.E. Brown, Leila Benoun Kaseke, Liisa Pynnonen, Loribeth Gregory-Beck, Michelle Hoover, Miguel Aguiar, Renee Tallent, Samuel Ponce, Shelley Littleton, Suzanne Soprano, Thomas Blood, and Violet Loza.

SELECT PROGRAMS COMING IN 2024

We hope you will join us at our Ventura and Santa Paula campuses for these exciting programs in 2024:



INNOVISION - Ventura County Artists to Watch

Opens June 8, 2024

Museum of Ventura County

InnoVision is an interactive exhibition that highlights the work of nine Ventura County artists. Through their innovative use of common materials, they create installations that reflect their personal visions and views of current issues.



MASTERS - From the Museum of Ventura County Collection

Opens June 8, 2024

Museum of Ventura County

Masters from the Museum of Ventura County Collection celebrates the extraordinary artistic legacy of seven artists in MVC's collection who have significantly shaped Ventura County's art history and achieved international acclaim.



ARTISTS & AMPLIFIERS FÊTE (Feat. Bonita C. McFarland Scholarship for the Visual Arts 2024 Award Ceremony)

Saturday July 20, 5:00-7:30pm

Museum of Ventura County / Members ONLY

This members-only fête celebrates our Bonita C. McFarland visual art scholarship award winners in an elevated garden party with private gallery tours, a silent auction, and comments from the Chief Curator.

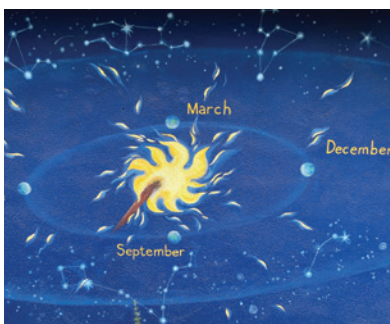


9TH ANNUAL LABOR DAY TRACTOR FAIR

Monday September 2, 11:00am-2:00pm

Agriculture Museum

The annual Labor Day Tractor Fair returns to encourage sustainable practices and motivate the next generation to explore agricultural careers.



WINTER SOLSTICE STORYTELLING FESTIVAL

Sunday December 15, 2:00-4:00pm

Museum of Ventura County

A vibrant Winter Solstice Festival with our Chumash communities, this event is designed to honor tradition, culture, and storytelling in a way that brings history to life.