

MUSEUM ^{of}
VENTURA
COUNTY

YEAR IN REVIEW

2021



THIS IS YOUR COMMUNITY PLACE



BEHIND THE EXHIBIT:

A GALLERY TALK WITH JORGE CORRALEJO



THIS IS YOUR INSPIRATIONAL PLACE

Message from The Barbara Barnard Smith Executive Director, Elena Brokaw



You don't need me to tell you that 2021 was another tempestuous year. As society went through the rollercoaster of Covid surges interspersed with periods of optimism and recovery, MVC worked to make our programs available to as many people as possible, in whatever medium they wanted.

2021 saw the continuation of successful and popular programs that we had started in 2020 – like *Craft Kits for Kids* giveaways and virtual school tours – and then an onslaught of new activities in the spring and summer. The programs were specifically designed to bring community members together safely, either in-person or online, and to provide connection that had been lacking for many of us for far too long.

Local History Happy Hour started as a virtual interview series author. The *Changemaker* series returned with panels on politics and climate change. In June, on-site programs resumed, with weekly *Mindfulness at the Museum* classes, the long-awaited unveiling of the John Nava masterpiece tapestry, *Big Platter*, and the openings of five new exhibits, expanded gardens, and refurbished galleries.

As I said, our goal was to bring our programs to as many people as possible – and to enable that, in the spring the Board of Directors decided that the Museum would be free for all visitors in 2021, in order to ensure that not one person is kept out of our doors because they cannot afford it.

The spirit of that decision was so successful – with attendance higher than ever before, and new participants joining the Museum family – that we decided to raise funds to keep MVC open for free for all of 2022. Your support through a November campaign made that possible!

In 2022, we look forward to continuing to provide diverse programs, to serve all of our community. While in-person events will gradually increase, we will not abandon our third campus: our website will continue to be a platform for live discussions, historical articles, virtual exhibits, and more.

We are thankful that you keep your Museum thriving, even in the most difficult of times. Those are the times that museums are most important: to record what is happening now for future generations, to provide perspective and hope, to be a source of inspiration and respite from daily life, and to connect all of us together.

A handwritten signature in blue ink, appearing to read 'Elena', with a long, sweeping horizontal line extending to the right.

Elena Brokaw
The Barbara Barnard Smith Executive Director

Our Vision: *Inspiring vibrant communities by connecting the past, present, and future.*

Our Mission: *The Museum of Ventura County, through its collections, exhibits, educational programs and publications, celebrates the history, art, and culture of Ventura County and the Channel Islands.*



"My grandmother used to take me to the Museum when I was a little girl and today, I brought my own little girl."

– Katie, event attendee

MVC INSIDER **LIVE**

The Museum of Ventura County first opened its doors in 1913 as the Ventura Pioneer Museum. For its first decade, it shared one room in what was then the County Courthouse with the Chamber of Commerce and the Farm Bureau. It's come a long way in the last century, and now has multiple sites.

THE MUSEUM OF VENTURA COUNTY IN DOWNTOWN VENTURA

The flagship of the museum facilities, the downtown campus has presented programs, exhibits, and educational activities since its opening on that site in 1977. Situated in the heart of downtown's historic district, the Museum has 3,000 square feet of gallery space, a research library, an events pavilion, an open-air courtyard, plaza, and gardens. These spaces work together to spark curiosity and encourage further learning about Ventura County and the region.

THE AGRICULTURE MUSEUM IN SANTA PAULA

Located in the historic Mill Building built in 1888 in downtown Santa Paula, the Agriculture Museum explores the county's farming and ranching history, engaging visitors with its broad collection of farming equipment, an outdoor garden, a living beehive, and an interactive farmers' market station for children. Rotating exhibits celebrate the legacy of agriculture in our region.

THE ALBINGER ARCHAEOLOGICAL MUSEUM

In 2019, the Museum of Ventura County partnered with the City of Ventura's Community Partnerships Division to expand hours and access to the Albinger Archaeological Museum. Located at 113 E. Main Street, this historic site is adjacent to Mission San Buenaventura and was once home to five different cultures spanning 3,500 years of history. While at the Museum, visitors learn about the Chumash Indians, Chinese immigrants and others who lived on the site by viewing displays, archaeological objects, and artifacts uncovered in 1974.

ONLINE CAMPUS

An expanded online presence through MVC's website and social media pages acts as the Museum's newest "campus." With virtual tours and exhibits, zoom talks and happy hours, history blog posts, educational resources, puzzles, and more, the Museum's online offerings bring our community together to celebrate art, history and culture digitally.

2021 EXHIBITS: BACK IN THE GALLERIES

Although open only 6 months, MVC opened 10 new exhibits in the galleries, and many outdoor installations.

The Weed Project: <i>Outlaws of the Super Bloom & Crimes We Commit in the Garden</i> , paintings by Charlene Spiller	MVC
Huelga!: <i>Photographs from the Frontlines</i> by Jorge Corrales	MVC/AG/VIRTUAL
Rock Paper Scissors: artwork by various Ventura County artists and artifacts from the Museum's permanent collection	MVC
Manipulations: <i>Photography in a Time of Isolation</i> , community photography from the COVID-19 pandemic	MVC
Big Platter: John Nava	MVC
A Study in Process: tapestry studies and works by John Nava	MVC
America's Revolution: <i>George Stuart Historical Figures®</i>	MVC
Tomols to Trains: <i>County Transportation through 1900</i>	AG
Organica: photography by Fabian Famosa	AG
Crossing Borders: works by immigrant artists	MVC
Echoes of a Recent Past: Public Art and Garden Installation by Paul Lindhard and Art City Studios	MVC
Women's Qualities: Public Art Installation by Ghada Amer courtesy of Desert X	DOWNTOWN VENTURA
Arte Para la Gente: <i>The Collected Works of Margaret Garcia</i>	MVC

MVC exhibits brought to you in part by the generous support of:

- Patti Channer
- The Heritage Fund at VCC
- Lazer Media
- Laura and Bill Peck
- The Port of Hueneme
- The Schwemm Family Foundation
- Fred W. Smith Gallery Fund
- Tom and Esther Wachtell Family Fund

THIS IS YOUR DIVERSE PLACE



"Arte Para la Gente: The Collected Works of Margaret Garcia was one of 2021's most important art events, to understate matters."

– Michael Sedano, La Bloga





*"I love what the Museum does
and how much you care about
our community."*

– Ken McAlpine



While the galleries were closed, MVC created new programs that can convert from virtual to live and back again, seamlessly.

The Changing Face of Ventura County: <i>Women Taking the Lead:</i> Moderated panel with Trudi Arriaga and 10 locally elected council-women currently serving on city councils throughout the County	VIRTUAL
Changemakers: <i>Local Heroes Combating Climate Change:</i> Moderated panel discussion by David Fukutomi with Dr. Chris Funk, Kris McDivitt-Tomkins, Hans Cole, Florencia Ramirez, and Michelle Stevens	VIRTUAL
Up Close and Personal with Ivor Davis: Interviews with Chris Hillman, Malcolm McDowell, and Miriam Arichea	VIRTUAL
Local History Happy Hours: Elena Brokaw and Eric Knight interview local authors Roz McGrath, Jose Alamillo, Betsy Chess, Jeff Maulhardt, Frank Barajas, Alicia Doyle, and Doug Halter	MVC/VIRTUAL
Designing in the Time of COVID: Moderated panel discussion by Mark di Cecco and Ventura County AIA members Nicholas Deitch, Lynn C. Johnson, and Jeffrey Lambert	VIRTUAL
Adaptive Design Transformation: Mary Follenweider in conversation with Nicholas Deitch	VIRTUAL
Evelyn and Howard Boroughs Children's Garden Mural Dedication and Grand Reopening: Blessing by tribal leader Julie Tumamait-Stenslie, and Women's Chumash Drummers circle	MVC
Story Time at the Museum: With Friday Gretchen, Chris Hillman, Kevin Carman, Jo Bowers, Amada Irma Perez, Cheryl Engel, and the Ventura County Mobile Library	MVC/AG/VIRTUAL
MVC Insider: Highlights from the archives, collections, exhibits, and the Agriculture Museum Gardens	MVC/AG/VIRTUAL
First Annual Hispanic Heritage Month Celebration: Ballet Folklorico Bell Arts and Inlakech Cultural Center Youth Mariachi performances	MVC
Dia de los Muertos: Community altars, Ballet Folklorico Bell Arts, educational school program, Aztec dancing, and musical performances by the Inlakech Cultural Center	MVC/AG/VIRTUAL
Mindfulness at the Museum: Meditation, rock painting, yoga, dance, and more-twice per week, all summer	MVC/AG

MVC events and programs brought to you in part by the generous support of:

- E.J. Harrison & Sons
- Pierpont Racquet Club
- SoCalGas

The Evelyn and Howard Boroughs Children's Garden was reimagined with educational Chumash installations.

This spring, MVC collaborated with artists, landscapers, and musicians to redo the Evelyn and Howard Boroughs Children's Garden and the Barbara Meister Chumash Garden for a June 2021 reopening. Muralist MB Hanrahan adorned the garden walls with landscapes, plants, animals, Native technology, and Chumash astrological features. MVC staff consulted Chumash elder Julie Tumamait-Stenslie and resident archaeologist John Foster to ensure the features appropriately reflect Chumash culture and worked with landscapers to enhance the native plant garden and identify each species with ethnobotanic labels in English, Spanish, and the Chumash language.

The Museum added:

- An educational archaeological dig site
- Touch table
- Rock stacking activity space
- Garden of Sound, an interactive space with musical instruments to encourage musical curiosity
- Garden activity guides

The redesign of the Children's Garden is truly a success...kids love it!

Upgrades and programming at the Evelyn and Howard Boroughs Children's Garden brought to you in part by the generous support of the Charles D. and Mary A. Bauer Foundation.





MEET OUR NEW EDUCATION STAFF

LEILA KASEKE, MUSEUM EDUCATOR

Leila has been an educator since 2011. She started her teaching career in Thailand and has taught English as an Other Language to children, teenagers, and adults. Most recently, she taught at Santa Barbara City College and Ventura College. Some of her favorite aspects of being a Museum Educator are creating resources such as the garden booklet, working with schools and students during tours and webinars and helping to gather the community through programs like Mindfulness at the Museum. Be sure to say "hi" to Leila if you see her at the Museum or around town with her husband and dog.



THIS IS YOUR LEARNING PLACE

SCHOOL TOURS: LIVE AND VIRTUAL

Over 2,780 schoolchildren, the vast majority from Title I underserved schools, took tours at the Museum or online. The tours related our region's Chumash history and shared our agricultural industry.

SUMMER CAMPS

MVC and LEGO® Play-Well hosted week-long camps at the AG and MVC Museum sites. 594 children participated in LEGO® brick-building activities that integrated STEAM curriculum and connected with themes of our Museum exhibits: art, architecture, plants, transportation, and more.

ONLINE TEACHER AND PARENT RESOURCE GUIDES

We now have a total of 18 virtual learning modules over the year, focusing on archaeology and Chumash culture. Over 7,000 families and teachers accessed these guides during the year.

CRAFT KITS FOR KIDS

Each quarter, MVC produced thematic "Craft Kits for Kids," comprehensive fun and learning experiences all packaged in one paper bag. Over 1,800 bags were distributed to families across the county, entirely free. Themes in 2020 included President's Day, home gardens, ecology, and Dia de los Muertos.

MVC Education programs brought to you in part by the generous support of:

- Charles D. and Mary A. Bauer Foundation
- E.J. Harrison & Sons
- Lydia Hopps in honor of Pheobe Hopps, young artist
- Leavens Ranches, LLC
- Leslie Leavens
- Bonita C. McFarland
- Mechanics Bank
- Mary Leavens Schwabauer
- Martin V. and Martha K. Smith Foundation
- Smith-Hobson Foundation Fund
- Union Bank



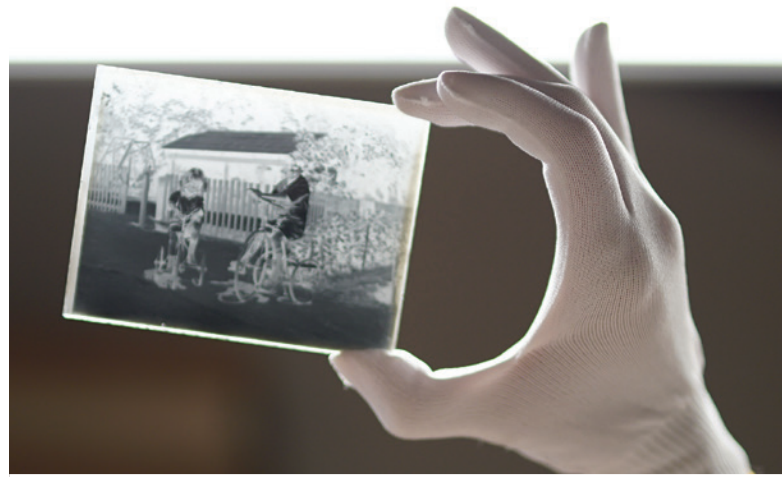
LIBRARY & ARCHIVES

Processing the Past, Helping Researchers Today, and Planning for the Future.

It was a dynamic year in the Research Library and Archives, one in which the past, present, and future united. We processed new collections from our past, assessed our current collections, and made plans for the future that will ensure the continued safeguarding and accessibility of Ventura County's historical archive.

During 2021, staff and volunteers:

- Received over 589 email research and image requests, all researched, answered, and fulfilled by staff and the Library's corps of 15 volunteers and four interns who worked over 2,424 hours both remotely and in-person
- Opened in July, welcoming 68 researchers for in-person research visits
- Processed over 325 cubic feet of archival collections
- Digitized over 1,200 items
- Hosted four student interns from San Jose State University, UCLA, and UC Santa Barbara
- Launched the Journal Flashback and continued to publish the MVC Then Blog, publishing stories of Japanese internship, prohibition, the history of Oxnard's libraries, and the changing landscape of agriculture in Ventura County
- Completed a Sustaining Cultural Heritage grant from the National Endowment for the Humanities, developing a comprehensive Disaster Response Plan to protect the Museum's Object and Research Library & Archives collections
- Completed a Fire Suppression Risk Assessment and a Comprehensive Risk Assessment for all collections
- Completed a Space Assessment, to ensure the collections are properly housed into the future



Research Library & Archives Programming brought to you in part by the generous support of:

- | | | |
|------------------------|-----------------------------|-------------------------------|
| ■ Al Lowe Construction | ■ County of Ventura | ■ TOLD Corporation |
| ■ Ellen Brokaw | ■ The Heritage Fund at VCCF | ■ Ventura County Credit Union |
| ■ Chrisman Estate Co. | ■ Pierpont Racquet Club | |

ARTIFACT HIGHLIGHT

In 2021, MVC catalogued 232 items from the backlog of unprocessed donations. Cataloguing is a complicated and lengthy process: staff and volunteers describe, measure, photograph, and label each artifact or artwork with a unique catalog number and enter it into MVC's collections management database.

In 2021, MVC processed the John Nichols Collection, which includes John Nichols' St. Francis Dam disaster research, compiled for the 2002 work for Arcadia Publishing titled *The St. Francis Dam Disaster*.

The objects in this collection include both commemorative items from the 75th anniversary of the disaster and items found by Santa Paula residents following the dam failure in 1928. Sections of concrete and pipe, allegedly part of the dam itself, remind us of water's power to exploit engineering weaknesses making such physically strong materials susceptible to failure with devastating consequences. Everyday objects, such as the sterling silver sugar spoon with the name "Fremont" inscribed on the handle, show the personal chaos and loss families experienced in Ventura County. In the care of MVC, this collection is preserved and accessible to researchers.

COLLECTIONS PLAN

This summer, MVC's Board of Directors approved a Collections Development Plan that evaluates the over 100-year-old collection in its current state. The collection has many strengths but also has gaps and inequities, the same situation for almost all museums' collections.

The Collections Plan includes a philosophy that outlines consensus of how MVC views the collections and the stories they tell, and charts a proactive 10-year guide for ensuring that the collections remain relevant to MVC's mission. The path forward will result in the Museum having more diversified artifacts that represent all of Ventura County, stories preserved along with the physical items, and a collection that focuses on relevant history: quality over quantity.

This Plan will aid everyone in the Museum family – staff, volunteers, and board members – to focus acquisitions and align the collections with exhibit and programming goals.





"I am always amazed by the detail available in the collection, especially the first person accounts that make local history come alive and be relevant to a reader today."

– Andy Ludlum, Library Volunteer



NOTICE!

1. The Red Cross is in charge of immediate relief of homeless. Headquarters are at Old Mill Street School.
2. American Legion searching for bodies.
3. Morgue is at French's Mortuary.
4. Hospital is at Old Mill Street School.
5. Report all missing persons to the Red Cross Headquarters.
6. Relief supplies are asked for. Send to Red Cross Headquarters.
7. Chas. Millard is street superintendent.
8. Lee Sheppard, City Marshal, will sign all passes to devastated area.



"This museum is fantastic. You could definitely spend a lot of time here if you let your kid just play. The staff was also wonderful and helpful. As good as some of the other museums we saw that day were... this one was our favorite!"

– Charles Lewis



THIS IS YOUR CHILDREN'S PLACE

The Santa Paula Museum was refreshed to tell new stories that speak to all of us.

The Agriculture Museum opened in 2011, but the building that houses it was constructed over 130 years ago as a warehouse for the region's agricultural goods waiting for transportation on the Southern Pacific Railway. The building and the Museum weathered storms, droughts, fires, and recessions over the past decade and ultimately a virus that led to the Museum's temporary closure on its ten-year anniversary. While the doors remained closed the first half of the year, staff and volunteers were inside remodeling the galleries and working on an extensive replanting project in the gardens.

During the closure, the U.C. Master Gardeners enhanced the gardens by adding multiple learning stations and expanding the native and drought-tolerant gardens.

WiFi boosters were installed for live streaming of school tours and our Education Team introduced Garden-specific activities booklets which allowed children and families to earn an Agriculture Museum or Museum of Ventura County logo patch after completing the fun filled activities.

In July, a fashionable new look in the galleries was unveiled along with a multitude of exciting new immersive and interactive exhibits. Among the new additions is a popular and engaging children's Farmers' Market which promotes healthy lifestyle choices through role-playing in a market-like atmosphere.

2021 programming at the Agriculture Museum is supported by:

- Farm Credit West
- Limoneira
- Index Fresh
- Topa Topa Flywheelers



NATIONAL
ENDOWMENT
FOR THE
HUMANITIES



Funding for the Ag Museum's expanded wifi coverage provided by California Humanities and the National Endowment for the Humanities as part of the American Rescue Plan Act of 2021



We offered student interns behind-the-scenes exposure to operations, integrating work experience with professional development.

Your Museum benefits from the contributions of talented college students, learning first hand how to be the next generation of museum professionals!

RESEARCH LIBRARY & ARCHIVES INTERNS

Joaquin Peres worked remotely to catalog the Herman Keene Collection of film footage of Santa Paula life from the early 1900s. Kande Kosior remotely helped the Museum reach its yearly goal of 1,200 digitized items, practiced assisting with research questions, and helped identify images of Japanese American families. Emilia Salcido began development of an online walking tour of historic sites in cities throughout the county, assisted in inventorying and cataloging periodical publications, and scanned images by local photographer JC Brewster. Nich Lawrence assisted in the digitization of photographic negatives and cataloging images, helped process backlogged collections, learned to use archival database software to catalog the Bard Family Collection and the Boy Scouts of America Collection, among others.

EDUCATION INTERNSHIPS

MVC recruited Carolina Apodaca-Morales who assisted with leading Museum school tours on Chumash history and science. She has helped with multiple events and created unique content to engage audiences in-person and via virtual offerings. Carolina shared her Instagram project *Razastory* at our Hispanic Heritage Month Celebration. She also prepared a video on how to create a sugar skull for *Día de los Muertos*.

AGRICULTURE MUSEUM INTERNS

Assigned to researching the Ag building's history, Phillip Argueta discovered compelling information we can use to develop tour scripts and informational videos. Monika Almazan assisted in the development and implementation of *Craft Kits for Kids* and *Día de los Muertos* events.



A LEGACY GIFT FOR THE FUTURE

PLANNED GIVING

One sentence in your estate plan can make a lifetime of difference.

The Edith Hobson Hoffman Planned Giving Society was created to enable our supporters to use tax-advantageous gift planning tools to give to the Museum, and be recognized during their lifetime for their vision and commitment. A planned gift to the Museum of Ventura County is a living tradition passed down across generations. We invite each donor and member of the Museum to think about ways you can honor your family's legacy and the Museum's mission by making a planned gift to the Museum of Ventura County today.

To leave a gift in your will, simply share with your attorney or financial planner that you would like to do so. To learn more about additional ways to make a planned gift to the Museum of Ventura County, contact Development Director, Eric Knight at (805) 653-0323 ext. 305 or eknight@venturamuseum.org.

EDITH HOBSON HOFFMAN SOCIETY MEMBERS

Neal Barr
The Brokaw/Miller/
Snyders Family
Susan and Robert Brown
Suzanne Chadwick
Jorge C. Corralejo

Bobbi and Donald Dufau
Linda and John Edison
Gail and Bill Faulkner
James and Mary Galbraith
Nancy and Spencer Garrett
Nancy Hey

Pat Jump
Maggie Erickson Kildee
John and Gayley McConica
Bernard and Dorothy Novatt
Mary Anne Estes Ritchie
Brian and Judy Robertson

Tommy Slater
Matthew and Nancy South
Martha Spriggs
Esther and Tom Wachtell
Hiroko Yoshimoto



Photo by Carl J. Hefner, 2000

Barbara Barnard Smith

June 10, 1920 – July 3, 2021

Barbara Barnard Smith had a profound impact on the Museum of Ventura County – one which will extend long beyond her lifetime. As a child in Ojai she discovered her lifelong passion for music. After studying music at Pomona College and the University of Rochester, she took a position at the University of Hawai'i in their new music department. There she became an ethnomusicology pioneer. Although most of her students were Asian-American, the program emphasized Western music. To develop a new curriculum for Pacific East Asian culture, she traveled across 13 countries in Asia, collecting all the knowledge she could about their music. She received the 2007 Honda Hongwanji Living Treasures Award, the 2008 Governor's Award for Distinguished Achievement in Cultural Arts and Humanities, and the 2020 Koizumi Fumio Prize in Ethnomusicology.

Dr. Smith never forgot the significance of her family's history in Ventura, and the importance of giving. Barbara Barnard Smith was the great-granddaughter of William Dewey Hobson, often referred to as the Father of Ventura County. "It's not an exaggeration to say that she fundamentally altered the trajectory of the Museum with numerous strategic donations over the years," says Elena Brokaw, The Barbara Barnard Smith Executive Director. "She ensured the establishment of a gallery devoted to the George Stuart Historical Figures® in the 1970s. And in 2018, her endowment to fund the Executive Director position was the first step towards sustainability for the Museum. She certainly changed my life, and I'm forever indebted to her for making it possible for me to serve as the first director in her name." Barbara Barnard Smith's character, giving heart, and passion are missed by the many lives she touched. The Museum of Ventura County thanks her for her contributions to the arts and how she so expertly weaved the fabric of community here and overseas.

The Museum of Ventura County appointed two new members to its Board of Directors in 2021.



Greg Monterrosa

A longtime Ventura County resident, Greg is dedicated to supporting and advancing entrepreneurship, innovation, and economic development. In 2007, he launched his first startup MyLLC.com; a business formation service, it went on to become one of the fastest-growing companies in its sector. In 2016, he helped bring startup center Hub101 to life in Westlake Village with a mission of supporting founders to “create, launch, grow.” He is also a board member of the Conejo Las Virgenes Future Foundation.



Gabriella Navarro-Busch

Gabriella is an Immigration Attorney based in Ventura, CA. Before she began her legal practice, she worked for the Oxnard Police Department for 23 years. Gabriella is a former President of the Ventura County chapter of the Mexican-American Bar Association, past Board Member for the Ventura County Bar Association and a former member of the Board of Trustees for the Colleges of Law of Ventura and Santa Barbara. She was the 2004 recipient of the State Bar of California President’s Pro Bono Service Award. She has been a consulting attorney for the Mexican Consulate in Oxnard since 2002 and is the referred attorney for several domestic violence shelters in the county whose clients qualify for immigration relief under the Violence Against Women’s Act.

MVC would like to thank everyone that has volunteered.

The docents, volunteers, and interns are the heart of the Museum. Every department of the Museum depends on volunteers to assist us in achieving our mission. You can assist in giving tours, archiving documents and photos, helping arrange special events, and being the face of the Museum greeting visitors at the reception desk. There are so many opportunities to volunteer!

If you would like to join the MVC Volunteer Family email us at: volunteer@venturamuseum.org or call (805) 653-0323 ext. 301.

MUSEUM COMMITTEES

The Museum depends on the volunteer time and talent of many dedicated community members to offer the programs and exhibits it provides each year. We welcome community members who are interested in joining our team to volunteer for one of these committees.

To learn more about who serves on your Museum’s committees, scan the QR code here.



ENDOWMENT FUNDS

CHRISTINA ALLISON FUND

Supports operational priorities as identified by the Board of Directors. Established by bequest 2019.

LILA ATKISSON FUND

Supports the cataloguing, digitization, and preservation of the Library's visual print collection. Established 2021.

BERRY RESEARCH LIBRARY FUND

Supports the acquisition, conservation, storage, display, and accessibility of historical library materials. Established 2006.

FORUM OF THE ARTS ENDOWMENT FUND

Supports art installations and projects at both Museum campuses. Established 1990.

BONITA C. MCFARLAND FUND

Supports the purchase and exhibit of fine art, promotes appreciation and awareness of art, and awards one or more scholarships annually to art students. Established 1990.

KAREN AND TOM PECHT FAMILY FUND

Supports operational priorities, as identified by the Board. Established 2018.

MIRIAM SCHWAB FUND

Supports operational priorities as identified by the Board. Established by bequest 2018.

FRED W. SMITH GALLERY FUND

Supports the purchase, maintenance, and restoration of the Museum's collection of George Stuart Historical Figures®, and/or repairs and improvements to the Fred W. Smith Gallery. Established 1992 by Barbara Barnard Smith and Helen M. Smith.

SMITH-HOBSON FAMILY COLLECTIONS MANAGER FUND

Supports the Collections Manager position. Established 2019 by Jeff Smith, Marilyn Cassidy, Barbara Stupay, and Greg Smith.

THE BARBARA BARNARD SMITH MUSEUM OF VENTURA COUNTY EXECUTIVE DIRECTOR FUND

Supports the Museum's long-term stability by providing funding for its Executive Director position. Established 2017.

HARDISON KIMBALL THILLE FAMILY FUND

Supports operational priorities as identified by the Board. Established 2017.

TOM AND ESTHER WACHTELL FAMILY FUND

Supports the exhibit of works from the permanent collection. Established 2018.

HELEN YUNKER COLLECTIONS PRESERVATION FUND

Supports the Museum Research Library and Collections Department, and exhibits materials from these areas. Established by bequest 2018.

MUSEUM OF VENTURA COUNTY ENDOWMENT FUND

Supports Museum operations. Established 2001.

MUSEUM OF VENTURA COUNTY—AGRICULTURE MUSEUM ENDOWMENT FUND

Supports the Agriculture Museum. Established 2019.

ENDOWMENT FUND CONTRIBUTORS

We thank the many generous donors who have made contributions to the Museum of Ventura County Endowment Fund:

Arthur Bliss and Toy White
Mr. & Mrs. Robert F. Brown
In memory of Bob and Betty Pfeiler
Nancy Gallagher
Nancy and Spencer Garrett
Index Fresh, Inc.
William and Elise Kearney
James Lloyd-Butler
In memory of Cynthia M. Lloyd-Butler
Patrick Lloyd-Butler

Martin V. and Martha K. Smith Foundation
Brianna McGrath
Barbara S. Meister
In memory of Larry Meister
Mr. & Mrs. John J. Menne
John and Stephanie Orr
Andrea Pfister
In memory of Edith Hobson Hoffman
Allan M. Pinkerton Family
Janice Petit Willis

The Museum of Ventura County gratefully acknowledges these individuals, foundations, organizations and businesses for their generous support of the Museum.

\$200,000+

County of Ventura
The Estate of Christina Allison
The Estate of Lila May Atkisson
Virginia Beck Davis Trust

\$50,000 to \$199,999

City of San Buenaventura

\$25,000 to \$49,999

California Small Business COVID-19
Relief Grant Program
Charles D. and Mary A. Bauer Foundation
William and Elise Kearney (B)
Martin V. & Martha K. Smith Foundation
John and Stephanie Orr
Smith-Hobson Foundation
Dorcas Thille
Esther Wachtell
Janice Willis

\$10,000 to \$24,999

Mimi and Philip Allin (DVC)
Anonymous
Elena Brokaw and Pat Miller (S)
The Estate of Ellen H. Roe
Gail and Bill Faulkner
Anthony and Edie Fowkes
Hammer-Hewson Associates
Index Fresh, Inc.
Limoneira Company
Julia Namba
Patagonia
Paul and Anne Leavens Family Fund
Richard Rush (B)
SoCalGas

\$5,000 to \$9,999

Aera Energy, LLC
James and JJ Birkenshaw
Ellen Brokaw
Peter Busch and Gabriella
Navarro-Busch (B)
E.J. Harrison & Sons, Inc.
Farm Credit West
Nancy and Spencer Garrett
Hoffman/Haley Marina Village, LLC
Jordan Laby
Leslie Leavens and John Krist (B)
Mechanics Bank
Andrea Pfister (V)
Dan and Susan Pinkerton
Gregory and Shelley Smith
Rebecca and Jeffrey Smith

Mary Stewart (DVC)
TOLD Corporation
Topa Topa Flywheelers
Union Bank
Ventura County Credit Union

\$1,000 to \$4,999

Ann Ahlstone
Dr. and Mrs. Albert Amorteguy
The Barbara Hahn Estate
David Bayer (V)
California Humanities
Patti Channer
Betsy Chess (B)
Joseph and Valerie Chrisman
Todd and Cheryl Collart
Conrad N. Hilton Foundation
Freddie Contarino
Roberta and Dan Cordell (DVC)
Marcia Donlon
Linda Dullam
Janet Dwire
Linda and John Edison
Katherine and Michael Enright
Fred and Susan Ferro
John and Diane Flynn
David and Jennifer Fukutomi (B)
Rod Gilbert
Kathy Grunewald
Linda Hadlen (V)
Jim and Tish Harris
Carolyn Hertel
Thomas and Genevieve Hinkle
Hinricher, Douglas & Porter, LLP
James Holden (DVC)
Lydia Hopps
Ellen Israel
Debbie Jackson
Dennis Jurcak
Jim and Sue King
Don and Mona King
John and Carol Lamb
Latitudes Gallery
Lloyd Properties
Dorothy Loebel
Al and Petra Lowe (B)
James and Cynthia Ludwig
Peter and Darlene Magness
Patti Magness
Bob and Della McCord
Kate McLean and Steve Stone (B)
Carolyn Menne
Gretchen and Marshall Milligan
Steve Noll

Eileen Ogle
Karen and Tom Pecht (B)
James and Linda Peddie
Jane Pidduck
Richard Pidduck
Carolyn Pidduck and Marc Soltan
Pierpont Racquet Club
Port of Hueneme - Oxnard Harbor District
Bob and Norma Privitt
Peter and Alison Ratcliffe
Sabrena Rodriguez and Andrei Bobrow
James and Maureen Scanlon (B)
David Schwabauer and Michael McMahan
Mike Sedell (B)
Sidney Stern Memorial Trust
Mike Silacci
Denise and Jim Sindelar (S)
Tim and Bethe Sullivan
Swift Family Trust
Richard and Kristin Taylor
Barbara Topping (DVC)
Craig and Sara Jane Underwood
Roz Warner and Michael Hogan
Jane and Edward Waters
Deirdre Weaver
Keith Westcott
Taylor and Tom Wolfe
Mr. and Mrs. Larry Wolfe
Whitten and Sally Yount

\$500 to \$999

Arthur Nichols Ranch
The Becker Group, Inc.
Mary Bergen
John and Cherie Brant (DVC)
Marla Brown
California Oaks Property Management
Don and Bonnie Carlton
Claire Carty
Suzanne Chadwick
James Chrismen
Eloise and Chuck Cohen
Mary Ann Cohen
Ann Cooluris
Dennis and Sybil Coyner
Dave and Jeanette Curci
Jane Delahoyde and Edwin Clark
Dullam Nursery
Jayme Fattarelli
Mr. and Mrs. Paul Friedrich
Howard Gabbert
James and Mary Galbraith
Margaret Garcia and Rhett Beavers
Jurgen and Gerry Gramckow

John and Elizabeth Grether
James Harrison
Chris and Connie Hillman
Ann Huston
Joanna B. Newton Administrative Trust
Maggie Kildee
Jeffrey Lambert and Albert Barosso
Thomas Laubacher
J. Link and Sally Leavens
Geri Levine Loe
James Lloyd-Butler
Anne Lombard
Al and Petra Lowe (B)
James Maddux
Marcia and Brad Marcus (DVC)
Laura McAvoy and Sol Chooljian
Edward McCombs
John and Gayley McConica
Barbara Meister
Donald Mills
Judith Munzig
Frank and Susan Naumann
Leanne Neilson
Gary and Vicki Nichols
Ojai Oil Company
Susan Peterson
Bill and Jane Rader
Rancho Largo LLC
Colleen Robertson
Dietrich and Valerie Schmidt
Kathleen Sisson and Michael Stephenson
(DVC)
Pam and Samuel Small
Lee Souleles
Scott and Tamara Stuart
Robert Suskind, M.D. and
Leslie Lewinter-Suskind
Terry Farms, Inc.
Tony and Anne Thacher
Judy Triem and Mitch Stone
Theresa Tyndall
Fred Van Wingerden
Carole Vanorsdol (V)
Linda Velthoen
Kelly and Robert Wilmer
Gary and Ann Wolfe
James and Alberta Word (DVC)

\$250 to \$499

Alexander's Landscapes, Inc
Anonymous
Everard and Brooke Ashworth
Joanna Axell
Cornelia Baer

Steven Bailey
Edward and Jill Banman
Yissel Barajas and Jaime Fernandez
Gary and Nancy Barber
Barbara Barraza and Alberto Ordonez
John and Kathleen Behne
Michael and Melanie Binsley
John Blanchard
Robert Bothamley
Peter Boyer
Grace Brandt
Kathleen Brokaw
Robert Brooks
Gerry Browning (DVC)
Donna Burger
Nina Butler
Faye Campbell
James Capito
Tom and Patty Carmody
Chuck Carter
Harriet Clune and Richard Stewart
Carol and Bob Cole
David Cook and Reta Tyree
Charles Covarrubias
De Colores Multicultural Folk Arts
Catherine De La Torre
Diane and Marti Dibble
Jan Dietrick
Patricia Dodds
Jim and Elaine Donovan
Nan Drake
Juanita Eastwood
Richard Esparza and Lauraine Brekke-Esparza
Richard and Marcia Fausset
Michelle Fieler
Martha and Scott Flournoy
Richard and Nancy Francis
Laura Fullilove
Richard and Mary Gallagher
Donald Grainger
Mr. and Mrs. Donald Greenberg
Linda Greene
Grether Farming Company, Inc.
Donna Hamer
Jon and Jennifer Hauss
John and Angela Hecht
Sharon Heintz
Stephen and Carolyn Hiller
Craig and Judy Hodson (DVC)
Harvard and Helen Horiuchi
Jeanne Hunt (DVC)
Maryanne Irving
Martha Jaffe
Margaret Kimball and William McPherson
Douglas and Linda Knight
Leah Lacayo
Leavens Ranches, LLC
Terri Lisagor
Dan Long and Karen Flock
June Lovell
Nelly Mac and Laiying Mac
Jacques and Erika Manset
Walter Marriott, Jr.
Ruth Maulhardt
Sharon McAlexander
Joanne McDonald
Ernie and Suzanne Melonas (DVC)
David and Carole Minkin
James Monahan and Glenda Cardona
J. Myers and Katherine Stone

John and Jessica Nava
Thomas and Mary Olson
Robert Olszewski
Oro del Norte, LLC
Maria Ortiz
Warren and Gail Paap
Kathleen Paulson and Jeff Heath
Ben and Banks Pecht
Peter and Rebecca Percy
Steven and Diane Perren
Allan Pinkerton Family
Michael Putman and Marge Karney
Richard Quint
R. A. Atmore & Sons, Inc.
Don Rodrigues
Harmony Rodriguez
Mary Lou Rusnik
Judith Russo
Jaime and Toni Santana
Bruce and Joyce Schoppe (DVC)
David Shilton
Martha Spriggs
Edward Summers
Betty Swift
Cindy Tachell
Michael Tapia
John and Caroline Thacher
Adela and Ken Trainor
Janice Turner
Ventura Downtown Lions Club
Robert Warnagieris
Sylvia Wikholm (DVC)
Gary Wolfe
Hiroko Yoshimoto

\$100 to \$249

Moustapha and Joanie Abou-Samra
Brian and Connie Aikens
Judi Allen (DVC)
Wendell and Denise Allen
Elizabeth Ammons
Betty Anear
Anonymous (2)
Jessica Arciniega and Tomas Hernandez
Kathy Asher
Association of Fundraising Professionals
Allan and Jyl Atmore
Annette and Rinaldo Baietti
Sandi Banks
Alyssa Barber
Suzanne Barkley
Penelope Barnds
Regina Barnes
Neal Barr
Alan and Katherine Batchelder
Illona Battaglia Aguayo
Brando Bautista
Vanessa and Jim Bechtel
Calvin and Gail Beeker
Bancroft Benner
Bennett's Honey Farm/Chip's Bees
Bernard and Eugenia Bernacchi
Judy Blades
Bart and Michelle Bleuel
John and Nancy Borchard
Robert and Sherrill Borrell
Caryn and Charlie Bosson
William and Joanne Bowie (DVC)
Richard Boyer
Roland Boys
Bob and Mary Braitman

Rene Briggs
Karin Brinkley
Barbara Brough
Jerry and Gail Brown
Jeffrey Brown
Mike and Nancy Brucker
Philip Brudie
Rachel Cahill
Victoria Camara
Camerata Pacifica
Liz Campos
Joyce Cantrell (DVC)
Charles and Maryrose Caspary
Susan Caughey
CAUSE
Elaine Cavaletto
Gabriel Chacon
Janice Chan
Russ and Linda Charvonja
Yvonne Cherbak
Robert and Paula Chianese
John Cinatl
Luralee Clark
Tom and Cara Cohen
James Colborn
Charles Cole
Jack and Wendy Collings
Dale Condra and Carolyn Briggs
Stephanie Coray
Lynn Creighton
Tom and Charlotte Crocker
David and Tina Cullenberg
Joy and Curran Cummings
Beverly Cunningham
Eileen Cusimano and Mary Smith
Gregg and Margaret Cutler
Julie Dahl-Nicolle and Geoffrey Nicolle
Ann Daigle
Jackie Davis
Gary and Bonnie Davis
Ivor Davis
Donald and Suzanne Deise
Paul Dentzel
Richard and Ellen Devericks
Docent Council of the
Museum of Ventura County
Steve and Caroline Doll
Ann Donlon
Robert and Linda Donovan
William and Mary Kay Doubek
Patti Douglas
Downtown Ventura Partners
Marcia Drescher
Barbara Dupree (DVC)
Marcia Edwards
El Concilio Family Services
Chuck and Cheryl Engel
Tila and Angel Estrada
JoAnn Evans
Ben Faber
Family of Helen Pidduck
Julie Feely
Ruthann and Jerry Feingold
Tamra and Jose Feito
Fine Arts Committee of the
Museum of Ventura County
Bryan Fisch and Carrie Rothstein-Fisch
Linda Fisher
Abra Flores and Edward Burnett
Follenweider+Associates
Dr. Stanley and Heidi Frochtzwaig
Carol Fujita

Johanna Gabbard and Michelle Boroski
Lucia Galgano
Doug and Nancy Garrison
Liz and Art Gaspar
Ilene and Howard Gavenman
Lynn Geller
Sandra Gelso
Andrew Gilmour
Debbie Golden
Lynn Goldsbrough
David and Jessica Goldstein
Stanley Gordon
John and Judi Gould
George and Christine Graham
Friday Gretchen and John Treur (S)
Carol Griffin
Julie Grist
Heidi Guzman
Bob and Lisa Hammond
Annie Hankinson
MB Hanrahan
Thomas Hardison
Barbara Harison
Margaret Harris
Patricia Havens
George Heavican
Cheryl Heitmann
Dave and Kathy Henri
William Herbert
Valerie Herzig
Bill and Pam Hicks
Barbara and Larry Hilburn (DVC)
Clyde and Lynne Hofflund
Stephen Holanov
Mike and Annie Hollins
Mary Sue Horgan
Dennis and Arlene Horwitz
Charlotte Hoyt
Carol Hughes
Camille Hunter
Donald and Carol Hurley
James Hurst
Zella and Hernan Ibanez
Mark and Carri Jacobs
Tony Jankowski
Stanley and Judith Johnson
Bill Joseph
Carlos and Heidi Juarez
Kathy Julian
Diane Kanne
Susan and Dan Kaufman
Josh and Mary Kay Kaufman
John Keats
Linda Kegerreis
Richard and Donna Keister
Richard Kelman and Patricia McCourt
Alan Kirschbaum
Allan Kurihara
Lucien Lacour and Carol Howe
The Richard Lagomarsino Family
Marie Lakin
Nancy Lander
Matthew Lavere
Karen Lewis
Vivian Lockard
David Loe and Tisha Longoria
Tracy Long
Patrick Loughman
Bill and Denise Magness
Patricia Maki
Patty Mallery

MUSEUM OF VENTURA COUNTY

Thank You To Our Supporters

Barbara Malley
Lawrence Manson and Delia Gorey
Kevin and Megan Marble
Lawrence Markworth and Susan Pollack
Atilano Martinez
Emma Mayer
Janet McAleney
Rosena McConica
Yolanda McCune
Sharon McGahan
John and Lisa McGee
Mary McGrath
Walter McKinny
Robert and Paula McLay
Nancy and Darren McMillan
Tom and Gerri McMillin
Neale and Sue McNutt
Michael and Linda McTigue
Beth and James Medina
Kenneth and Lynn Merideth
Jay and Jean Midgley
Robert Milazzo and Mary Stanistreet
Ines Monguio
Frances Monroe and Bruce Hardy
Judy Moore
Michael Moreau and Florence Yau
Carl Morehouse and Janna Minsk
Kioren Moss
Victor Munoz
Mr. & Mrs. Greg Nelson
Vivian and Tom Nelson (DVC)
John and Carolyn Nicholson
Barbara Niles (DVC)
Annette Nino
Merle Oberg (DVC)
Rose-Lise Obetz
Marietta O'Farrell
Linda O'Neill
Andreas Ozt
Bill and Francie Parr
Jone Pence
Catherine Penprase
Arturo and Amada Perez
Rafael Perez
Linda Peterson
Lynne Peterson
Don and Jane Pinkerton
Roberta Pittman
Pleasant Valley Historical Society

Paula Poll
David Pollock
Jeanne Pruitt (DVC)
Liisa Pynnonen (S)
Sandra Quick
William and Linda Ramelli
Steve Ramirez
Carmen Ramirez
Eleanor Rasnow
Mark and Eleanor Richman
Steve Riley
Jim Rivera and David Luna
Cliff Rodrigues
Michael Rohde
Barbara Rose
Ursula Rowe
Bonnie Roy
Sofia Rubalcava
Ric and Penny Ruffinelli
Joseph Rund and Alfonso Reta
Sallie Sanchez
Sandra Sanders (V)
Daniel Sandoval
Karen Savitt
David and Janis Schmutte
Lawrence and Cindy Schwartz
Yvonne Seabold
Edward and Linda Selby
Terry Shain
Louise and Larry Sharp (DVC)
Sherman Library & Gardens
Mary Shore
Steve and Shirley Simms
Sandy Singer
Tim Snowber and Robin Wallace
Sorooptimist International of Oxnard
Carol Spector
Dr. William J. Spellman
Charlene Spiller
Patrick and Suzanne Squires
John Stauffer
Mark Stienecker
Renee Sutton
Kerry Swift
Dr. and Mrs. Bruce Tabor
Sheila and Rick Tate
Deya Terrafranca (S)
Lawrence Terrafranca
George and Patricia Theisen

John Tiszler
Terrence and Karen Townner
Tyler and Patricia Tugwell
Marcia Turner
Susan Van Abel and Eric Oltmann
Laurie Vanoni
Ray Vargas
Roberto Vargas
Yvonne Vargas
Edward Vasquez
Ventura Council of Governments
for the City of Santa Paula
Ventura County Office of Education
Marilynn Viles
Doreen Villanueva
Diane Von Heyneman
Charles and Blake Wade
Kristi Wallace Knight
Adele Walsh
Michael Ward
Virginia and Jeffrey Weber
William Weirick
Heidi and Mike Whitcomb
Linda White
Eliane and Rick White
Jim and Janette Whitney
Jane Wilkes
John Willer and Michele Willer-Allred
Mary Eileen Williams
John Williams
Michael and Evelyn Williams
Doug and Caryn Woodburn
Camille Yannantuono
Casha Yellin
David Young and Jill Forman
Francois and Mary Zugmeyer
Wilhelmus and Johanna Zwinkels

Below \$100

Kathy Abbott-Mayer
James and Joanne Abing
George Abrams and
Martha Symes-Abrams
Neal Abramson
Jane Advani
Allen Construction
Susan Andrews
Robin Angel
Anonymous (9)

James Arellano
Judy Armstrong
Shirley Armstrong
Mary Arnold
Barbara and Donn Aron
William and Carol Aulich
Lois Bach and Greg Gohde
Elizabeth Bachman and Robert Tallyn
Marie Baez
Janet Bagby
Debra Bagley
Nick and Marina Baker
Tony Baker
Bryce and Elaine Bannatyne
Frank Barajas
Marion Baranowski
Richard Barbar
Carol Barcellos
Don and Deborah Barker
Joan and Mike Barminski
Suzanne Barnes
Toni Barnett
Steven and Denice Barr
Sue Barrera
Chris and Linda Bartelson
Marie Battle
Mary Jane and Richard Bauleke
Barbara Beach
Katherine Beattie
Christine Beirne
Steve Bennett and Leslie Ogden
Jonathan Berger
Irving Bergman
Nancy Berry
Connie Biggers
Linda Bizzelle
Janet and Jim Black
Jane Blackman (DVC)
Charlene Blalock-Carlson
Donna Blasius-Pitzler
Debbie Blount
Lynda Blue
David and Alexis Boeshaar
Sue Bolton
Diane Bovee
Jo Bowers (S)
Diana Boydston
Jean Boyer
Helen Brant

A Gift to the Museum is a Gift to the Community

Your personal gift is needed today more than ever. The increased participation we've seen since we made admission free means we want to eliminate entry fees permanently! With your support, we will make it possible for new visitors to experience a world they never imagined possible.

Please consider making a gift right now, by returning the attached remit envelope, or visit venturamuseum.org.

Your support makes a difference.



Kathleen Briggs	Carol and Larry Dawes	Larry Greene	Robin Lamar (DVC)
Carol Brock	Lorelle Dawes	Wylie and Janet Greig	Amber Landis
Jerry and Connie Brown	Marsha De la O	Richard Gritz and Barbara Mizuno	Alan and Nenifa Langville
Lisa Brown	Karen De La Pena	Margo Haas	Jeanne Larocco
Danielle Brown	George DeCotis and	Erik Haig	Law Offices of William S. Dunlevy
Karen Brown, PH.D	Elizabeth Miner Decotis	Jack and Beverly Halpin	Sheila and Herbert Lazarus
Dorothy Brunkan	Lance and Katie Deutschman	Douglas Halter and Randy Encinas	Joann Leeper
Vella Buchanan	Ron and Barbara D'Incau	Susan Hancock	Joseph Legacy and Joe D. Legacy
Sandra Buechley	The Discovery Center for	Lennie Harris	Natalie Lehman
Deborah Burns	Science and Technology	Cynthia Hashbarger	Fredda Leiter
Carol Bury	Mary Dolliver	Luisa Haskell	Heather and Steven Leonardo
Jim Bushong	Beverly Drapeau	Mike and Denise Hause	Constance Leshin
Allen and Marilyn Camp	Karen and Robert Draper	Marjorie Hawkins	Charles Levin
Douglas and Christine Campbell	Judy and Dan Dugan	Deborah Hazen	Ellen Lewis
Kevin Cannon	Walter Dunlop	Susan Hecht	Chase Lichtenstein
Mike Capesius	Keith and Linda Duval	Sanger Hedrick	Lou and Kay Liddi
Leticia Carabajal	Dennis and Jane Dwire	Craig and Denise Held	Carol Lindberg
Glenda Cardona (DVC)	E.P. Foster Library	James Heller	Pat Lindley
Linda Carson	Marisue Eastlake	Brad Helton	Pamela Lindsay
Constance Casavan and	Lauraine Effress	John and Laurel Hewson (DVC)	Timothy and Kathryn Linman
Heather Tunigold (DVC)	Joan and Bob Egbert	Kay Hill (DVC)	Victoria Lloyd
Roger Case	Norma Ekman	Marilyn Hilton (V)	Geoff and Nancy Loman
Colleen Cason-Comeaux	Myrtis Ellis	Lynnae Hitchcock	Joyce Lombard
Candace Cassidy	Frances Elson	Linda Hitt	Dennis and Jeanette Longwill
Charles Cassy, Esq	Deloris Emerson	Karen Hoffberg	Robert Lopez
Craig Chambers	LaVaughn Engblom	Lisa and Darin Hornbaker	Los Angeles Public Library
Patty Chan	Linda England	Eric Hvolboll	Rockwood and Susan Ludes
Michele Chapin	Georgianna Erskine	Rosemary Icardo	Andrew Ludlum (V)
Marisela Chavez	Nancy Escher	Tammy and Curtis Jensen	Sherry Lyons
Rosemary Chavoya	Laura and Victor Espinosa	Helen Johnson and Michael Harrison	C.B. Magallanes
Steve Chawkins	Barbara Evans	John Johnson	Kathleen and Keith Manion
Amy Cherot	Debra Eve	Lynn Johnson	Suzanne Manriquez
Karen Cherry	Todd Everett	Douglas Johnson	Jan and Abbe Marholin
William Chilcutt	Robin Faigin	Gail Johnston	Stella Marin-Denny
James Chip Fraser	Donna Fairfield	Larry and Priscilla Jones	Jo Marsh
Jim Christiansen	Margaret Fall	Lana Jones	A. Diane Martell
Muriel and George Christianson	Christine Farro	Thomas and Rose Ann Jones	Nancy Martin
Helen Chtourou	Bill and Kate Faulkner	Joanne Julian	John and Linda Martinez
Ginny Claborn	Donald Fay	Kathleen Kaiser	Diana Martinez
Erwin Clahassey	Beryl Feller	Joanne Kaplan	Betty and Al Martinez
Sharon Clark	Marge Figurski	Susan Kaplan and Michael Israel	Grace Martinez
Margaret and Delbert Clayton	Roy and Lois Fischman	Robert Karatsu	Steve Mason
Alana Coghlan	Wesley Fish	Dan and Michelle Katz	Judith Masterson
Angela Colicchio	Shirley Fitzgerald	Kris and Meenal Kelkar	Patricia Masterson (DVC)
Jean Collins	Martin and Marianne Flam	Richard and Elaine Keller	Frank and Charaline Maxim
Brigitte Colzani	Judy and Mark Fleischman	Mike and Merrie Kelley	Nancy Maxson (V)
David and Tina Comden	Geraldine Fletcher	Nancy Kellogg	Lois McCampbell
Roger Conrad	Kevin and Stephanie Flint	Denise Kelly	Sally McCormick
Andrea Contarino (S)	Shelly Foote	Michael and Linda Kelly	Thomas and Janice McCormick
Colleen Conway	Frank Foster and Julie Hedrick	Judy Kerr	Pat McCormick
Robert Cook	Donna Foster	Janet Kessler	Suzanne McGee
Joan Cook	Naomi Fowler	Taras and Lily Kiceniuk	Johanna McIntosh
Daveta Cooper	Rebecca Fox	Ann Kidson	Jonell McLain
Dr. Thomas Coultas	Mark Fox	Ruth Kilday	Carol McMullin
Doris Cowart	Kathy and Jim Franklin (V)	Jamie King	Susan Measures
Joel and Chris Crawley	Richard and Yvette Franklin	Debra King	Carol Mechanick
Daniel and Janet Crotty	Helen Fredell	Karen and Doug Kirk	Jim and Kitty Merrill
Jim and Donna Cruz	Aimee French	Jo Kirk	Forrest Merrill
CSU Channel Islands Library	Jim Friedman	James Kirkpatrick	Luke Metz
David Culton	Devlin Gandy	Karen Kirschenbaum-Reynosa	Trygve Mikkelsen
Sharon Cunningham	Jim Gardner	Lynne and Robert Klamser	Juliet Milhofer
Mary Currence	Greg Gardner	Eric and Dolly Knight (S)	Sherwood Millemann
Laurie Curtis-Abbe and Mark Abbe	John Gay	Betty Knowles	Gerald and Ana Miller
Nicole D'Amore	Ginger Gherardi	Mary and Peter Kobashikawa	Sheldon and Beth Miller
Mr. & Mrs. Milton Daily	Kay Giles and Michael Mariani	Carol Koch	Judy Miller
Duane Dammeyer	Judi Gill	Sharon Koch	Patricia Miller
Kenmere and Robert Davidson	Leyland Gillibrand	Christine Kovell (V)	Sue Mitchell
Harry Davidson	Gladney Family Trust	John Krist	Gerald Mohr
Tricia Davis	Alan Gordon	Kronkwood Fund	Curt and Jane Montague
Curt and Carolyn Davison	Scott Gordon and Sabine Dodane (S)	Elyse Kutz	Sherman Moore and
Claudia Davoli	James Graves	Marvin Kwit	Pamela Libis-Moore

MUSEUM OF VENTURA COUNTY

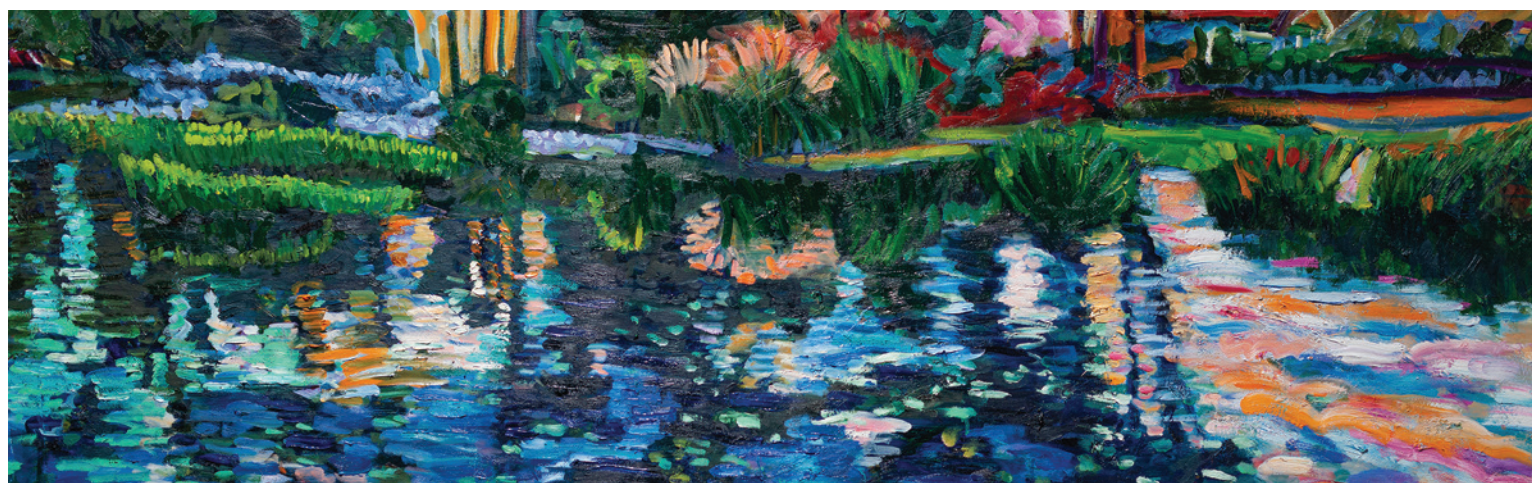
Thank You To Our Supporters

Diane Moore and Lyn Utsunomiya
Moorpark College Library
Irma Morales
Aurora Mordey
Katherine Morgan
Theodora and Jerrold Morris (DVC)
Kathleen Morris
Pamela Mortensen
Jeanette Mueller
Vivian Mullett
Burton and Irene Munger
Dr. Maria Munguia
Cliona Murphy
Margie Murray
Nan and Hal Nachenberg
Sally Narkevic
William and Carolyn Neel
Suzanne Neer
Network for Good
John Nichols
Gina and Gary Niebergall
William and Patricia Niederst
Margaret November
William and Linda Nugent
Terry and Nancy O'Brien
Michael O'Daniel and Joanne Zivich
Jeff Ohlfs
Rafael Ojeda
Leon Older and Susan Craddock
Gerald and Joan Olsen
Nicholas Orr
Tedi Patterson
Tim and Laura Pedegana
PEO Sisterhood MC
M. Pereira
Bernardo Perez
Rain Perry
Michael Peterson
Joan and Gary Phelps
Gary and Jean Phillips
Fred Phipps and Catheryn Trainer
Ron and Martha Picciotti
Bill and Michelle Piotrowski
Doris Pittman
Scott and Ginny Powell
Rick Power
Paul and Pauline Powers
Victoria Pozzi
Roanna Prell
Leslie Pruitt

Elizabeth Quinn
Virginia Randolph and Jennifer Gates
Marianne Ratcliff
Pam Reddekopp
Pat and Susana Reeder
William Reilly
Robert and Norma Rich
John and Sally Richards
Dick and Martha Richardson
Joan Roberts
George Roberts
Elizabeth Rodeno
Donna Roff
Kenneth and Martha Rogers
Helen Rolls
Hope Rosenfeld
Anne Roundy-Harter
Richard Rudman
Nils and Beverly Rueckert
Edward Russell
Michael Russell
Mary Rydberg
Judith Salazar
Luis and Lori Sanchez
Patti Savage
Camille Schaetzel
Carl Schorsch
Alan and Jean Scott
Mary and Don Scott
Susan Scott
Michael Sedano
Kevin Seelos
Ashley Seery
Katherine Seifert
Jonathan Serret
Servpro Of Camarillo / Oxnard
Shirley Shanahan
Tom and Judy Shaw
Madeleine Sifantus
Charles Sill
Lynette Sim
Ellen Sklarz
Marianne Slaughter and Dee Press
Robert and Frances Smith
Michele Smith
Andy Sobel and Anne Stehly
Jane Spiller
Charles and Linda Spink
Carol Spinner and Charlene Digman
Beth Steele

Lori Steinhauer
Karilyn Steward (DVC)
Fran Stewart
Robert Stewart
Kenneth Stock and Ann Reynolds
Elle Stockton
Margaret Strobel
Harrison Stroud
Michael Stump
Sandra Swanson
Denise Swanson
Alice Sweetland
Melvyn and Judith Swope
Constance Taft
Susan and Rob Talmadge
Ben Tapia
Carmen Taylor
Cynthia Taylor
Sharon Taylor
Sandy Tenenbaum
Arlene Tepper-Trister
Maria Teran
Greg and Debra Thayer
Sidney Tinberg
Bob and Kathie Tobias
Cassandra Tondro
Gary and Pamela Tonucci
Fernando Torres
Myra Toth
Marian Totheroh (DVC)
Sandi and Bob Tovias (DVC)
Mary Travis
Alexander Tsinondas
Donna Turner
Deby Tygell
University of California Bancroft Library
Jovita Valdez
Patricia Valenteen
Robert Valles
Ventura College Library
Ventura Downtown Lions Club
Karen and Dennis Vied
Blanca Villasenor-Russo
Rev. Audrey Vincent
Peeranut Visetsuth
Clint Vocke
Mary Volpe (DVC)
Mary Vomund
Madeleine Waddell
Donald Walker
Alix Walker

Lee and Christine Wan
Julie Ward
Katherine Warner and Pete Dibble
Robert Warner and Isabel Downs
Leslie Warren
Hal Wasserman
Maggie Watson (DVC)
Linda Watson
Timothy and Leslie Wawrzeniak
Rauleen Weckworth
Marie Weed
Tessa Weeks (DVC)
David and Tina Weinstein
Natalie Weinstein
Eugene and Patricia West
Dotty Wheeler (DVC)
Richard Wheelock
Frederick White
Paul Whitehead
Richard Wibbelmann
Joyce Wiechert
Joe Wigert
Pat Wiker
Kathryn Wilbur
Linda and Norman Wilkinson
Mel and Danielle Willis
Teri Willison
Rikke Wilson
Darrel and Beth Wilson
Karen Wilson
Maureen and Brett Wilson
Montgomery and Maio Winkler
Pat Wise
Terri Withers
Mr. and Mrs. Ed Wohlenberg
Sandie Wolfe
Cheri Wolfe
Peter Wood and Wendy Gayner (DVC)
Michael and Sushila Wood
Jackie Worden
Don and Carley Worth
Debbie and Steve Wright
Patricia Wynn
Melissa Yalinkatian
Russell and Paula Yermasek
Jean Yeto
Gerald and Cynthia Yoshitomi
Irma Zahid
Wade Zimmerman
Monda Zozos
Valerie Zwirn



IN MEMORY OF:

Arthur G. Ahlstone
Ann Ahlstone

Dr. John Peter Arnold
Betty Swift

Lila Atkisson
Elena Brokaw and Pat Miller
Philip Brudie
Luralee Clark
Ann Daigle
Linda Hadlen
Kathy Julian
Linda Kimbrough
Barbara Niles
Kathleen Sisson and
Michael Stephenson
Jane Wilkes

Esther and Lee Atmore
Eileen Cusimano
and Mary Smith

Ruth "Mousie" Barnard
William and Elise Kearney
Betty Swift

Ned Bartels
Marilynn Viles

MaryAnn Benton
Family of Helen Pidduck
Camille Hunter
William and Elise Kearney
Dorcas Thille

Kai Blanchard
Elena Brokaw and Pat Miller

Norman Blacher
Suzanne Chadwick
William and Elise Kearney

Deedee Busch
Anonymous

Bennett R. Curtis
Mike and Denise Hause
Richard Pidduck

Richard Newton Daily
Betty Swift

Ray Digulio
California Oaks Property
Management

John M. (Jack) Dickenson III
William and Elise Kearney
Kate McLean and Steve Stone
Betty Swift

David J. Donlon
Jane and Edward Waters

Henry Edward (Ed) Elson
Elena Brokaw and Pat Miller

Peter T. Fallini
Allan Pinkerton Family
Anonymous
Richard Pidduck

John "Jack" Fay
William and Elise Kearney

Joyce Ferro
William and Elise Kearney

Frances Gagola
Elena Brokaw and Pat Miller
Sylvia Wikholm

Marilyn Jeanne Gordon
Anonymous
Sabine Dodane
Scott Gordon

Anne Shilton Graumlich
Lynn Goldsbrough
David Shilton

Mary Deonne "Dede" Greene
Claire Carty
Betty Swift

Charles Griswold
Friday Gretchen and John Treur

Elaine Halter
Tracy Long

Albert Harris
William and Elise Kearney

Cynthia Clark Heffner
Claire Carty

Ed Hogan
William and Elise Kearney

Terri Holden
Docent Council of the Museum
of Ventura County
Deya Terrafranca

Geraldine "Geri" Lee Epstein Hooks
Sabine Dodane
Scott Gordon

Bob Kildee
Maggie Kildee

Lise Ann Kimball
Vanessa Bechtel
Elena Brokaw and Pat Miller
William and Elise Kearney
Jane Pidduck

Michael Lonegan
William and Elise Kearney

Susan and Edward Lacey
Kate McLean Steve Stone
William and Elise Kearney

Congressman Robert (Bob) J. Lagomarsino
Kathleen Briggs
Thomas Laubacher
The Richard Lagomarsino Family

Eva Laubacher
Mike and Nancy Brucker

Irene Level
Gerry Browning
Mary Stewart
Sylvia Wikholm

Ted Lighthizer
Kenneth and Lynn Merideth

Rosemarie Quint Magness
Bill and Denise Magness
Patti Magness

Richard Martinez
Richard Pidduck

Steve Maulhardt
Suzanne Chadwick

Rita McAllister
Kathleen Sisson and Michael Stephenson

John Jacob Menne
Allan Pinkerton Family
Elena Brokaw and Pat Miller
Mike and Nancy Brucker
Nina Butler
Suzanne Chadwick
Joseph and Valerie Chrisman
Donald and Suzanne Deise
Patricia Dodds
Linda and John Edison

Katherine and Michael Enright
Fine Arts Committee of the
Museum of Ventura County
William and Elise Kearney
Thomas Laubacher
Walter McKinny
Neale and Sue McNutt
Martha Spriggs
Scott and Tamara Stuart
Esther Wachtell

Everett DeFord Millais
William and Elise Kearney

Suz Montgomery
William and Elise Kearney

Victoria Moore
Harmony Rodriguez

Darrell Nelson
Richard Pidduck

Joanna Bard Newton
Joanna Bard Newton
Travers Newton Jr.
Georgia Newton Pulos

Thomas J. Noll
Steve Noll

Helga Ohrt
Charles Cassy, Esq
Law Offices of William S. Dunlevy
Janet McAleney
Ernie and Suzanne Melonas
Katherine Morgan
Joan and Gary Phelps
Ventura Downtown Lions Club

Jon H. Peterson
Edward Russell

David Raymond Petit
Richard Pidduck
Marilynn Viles

Ron Polito
William and Elise Kearney

Bruno Pozzi
Elena Brokaw and Pat Miller
Linda and John Edison
William and Elise Kearney
James Maddux
Kate McLean and Steve Stone

Alan Rains
William and Elise Kearney

Pasqual Ramirez
Edward Vasquez

Larry Reilley
Betty Swift

Mary Leavens Schwabauer
Whitten and Sally Yount

Frederich Michael Shore
Ann Ahlstone
Elena Brokaw and Pat Miller
Family of Helen Pidduck
William and Elise Kearney

John Sindelar
Denise and Jim Sindelar

Barbara Barnard Smith
Elena Brokaw and Pat Miller
William and Elise Kearney
Kate McLean and Steve Stone

Jim Rivera and David Luna
Gary and Ann Wolfe

Jacqueline Roberts Swan
Charles Sill

Christopher D. Taylor
Richard Pidduck

Charles Vacca
William and Elise Kearney

Gavin Vasquez
Edward Vasquez

Thomas Manning Volk
Kathleen Briggs
William and Elise Kearney

Tom Wachtell
Elena Brokaw and Pat Miller

Suzanne Chadwick
Linda and John Edison
Fine Arts Committee of the Museum
of Ventura County
William and Elise Kearney
Thomas Laubacher
Kate McLean and Steve Stone
Carolyn Menne
Susan Peterson
Martha Spriggs
Whitten and Sally Yount

Hon. Colleen Toy White
Elena Brokaw and Pat Miller
Suzanne Chadwick
William and Elise Kearney
Kate McLean and Steve Stone

Patricia Wiker
William and Elise Kearney

Nancy Pelton Worthington
William and Elise Kearney
Jane Pidduck

IN HONOR OF:

Mimi Allin
Elena Brokaw and Pat Miller

Miriam Arichea
Robin Angel
Barbara Meister
Katherine Seifert
Terri Withers

Cayden Avery
Cheryl Heitmann

Anna Bermudez
Mimi and Philip Allin

Brenda and Jerry Bodie
Mimi and Philip Allin

Jo Bowers
Mimi and Philip Allin

Elena Brokaw
Kate McLean and Steve Stone
Barbara Meister

Jim and Bambi Clark
Mimi and Philip Allin

Ivor Davis
Martha Jaffe
Barbara Meister
Katherine Seifert
Robert Suskind, M.D. and
Leslie Lewinter-Suskind
Mary Eileen Williams

Mary Distin
Mimi and Philip Allin

Laurie Dunning
Andreas Otz

Michele and Craig Floyd
Mimi and Philip Allin

Rod Gilbert
Elena Brokaw and Pat Miller

Scott Gordon
Mimi and Philip Allin
Elena Brokaw and Pat Miller

Cindy and Rick Jones' 50th Anniversary
William and Elise Kearney

Bill Kearney
Elena Brokaw and Pat Miller

Monica Loughman
Patrick Loughman

Kate Mclean
Elena Brokaw and Pat Miller

Barbara Meister
William and Elise Kearney

Jennifer and Tyson Muller
Mimi and Philip Allin

Museum Of Ventura County Staff
Patti Channer

Ben and Julia Namba
Elena Brokaw and Pat Miller
William and Elise Kearney

Lupe Ortiz' 90th birthday
John and Stephanie Orr

Susan Peterson
Edward Russell

Brian Robertson's 80th Birthday
William and Elise Kearney

Ned Clark and Benedicte Schoyen
Mimi and Philip Allin

Mike Sedell
Elena Brokaw and Pat Miller

Jim Wick and Karen Setterfield
Mimi and Philip Allin

Denise Sindelar
Linda Kimbrough

Jim Sindelar
Mimi and Philip Allin

Anne and Peter Thille
Mimi and Philip Allin

Esther Wachtell
Mark and Carri Jacobs

Esther and Tom Wachtell
Nancy and Spencer Garrett

Donald Wallace
Tim Snowber and Robin Wallace

Brittany Whipple
Mimi and Philip Allin

Lynn and Charles Whipple
Mimi and Philip Allin

Julia Wilkerson
Mimi and Philip Allin

Guy Wilson
Michele Chapin

To make a donation, please call the Development
Department at (805) 653-0323 ext. 330 or
email sgordon@venturamuseum.org.



In 2022, the Museum will honor the extended families and descendants of Isabel Winemiller and William Dewey Hobson. The Hobsons arrived in Ventura County in 1854 and the vision and drive that they had and shared with their families has forever changed the way we experience our environment. The political battles they fought, the infrastructure they built, the values they instilled in a newly growing county, have all been a vital force in shaping our community.

MVC was scheduled to throw a gala to celebrate this remarkable family in 2020. Because it was canceled due to Covid, the Museum produced a series of documentaries about the first four generations of the family, now in its seventh generation. Please visit venturamuseum.org/bbag-video-series/ to see the films.

The luncheon on July 30 will be followed by docent-led tours through the Lloyd/Hoffman house. Tickets will be available in spring 2022.



"The best kept secret in Ventura for kids!!"
— Becky Swift

"There's a new destination in California, gente."
— Michael Sedano, La Bloga



DONOR RECOGNITION / DONOR WALL OPPORTUNITIES

DONOR WALL

The Museum of Ventura County and the Agriculture Museum unveiled new donor acknowledgement installations in 2021. The Museum is proud to have this new space which displays the names of all donors with a life-time giving over \$50,000, the names of the Endowment Funds, the endowment fund supporters over \$50,000, and those who have committed to the Edith Hobson Hoffman Society planned giving program.



A COMMEMORATIVE TILE IN THE MUSEUM PLAZA

A \$1,000 gift in honor or memory of someone is recognized with installation of a commemorative tile that will remain outside the Museum for years to come.

HONORARIUMS

An Honorarium gift provides a meaningful, living tribute to a friend, relative, or colleague by commemorating a special occasion. Celebrate birthdays, anniversaries, and other special events with a Honorarium gift to the Museum in honor of your loved one.

MEMORIALS

You can also remember a loved one or express your sympathy with a Memorial gift to the Museum. A Memorial is a personal remembrance that honors a deceased friend, relative, or colleague.



COMING IN 2022

While 2022 has so far proven itself to be another year where we need to be prepared for lots of changes, MVC is planning many new exhibits, live events, and virtual programs to appeal to all our participants:

MONTHLY

UC Master Gardeners Gardening Workshops	AG
Family Fun Days	MVC/AG
Bi-Monthly Figure Drawing	MVC

SPRING (MARCH - MAY)

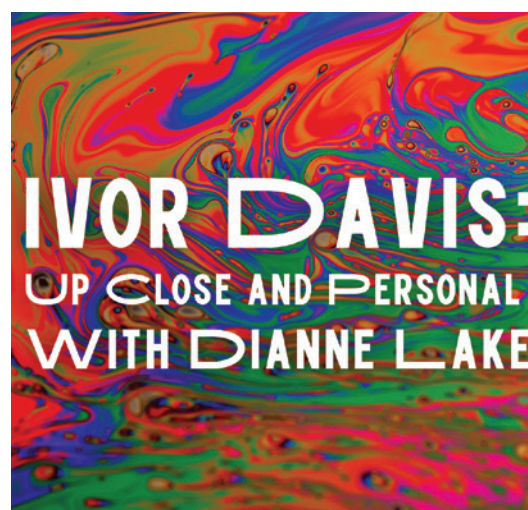
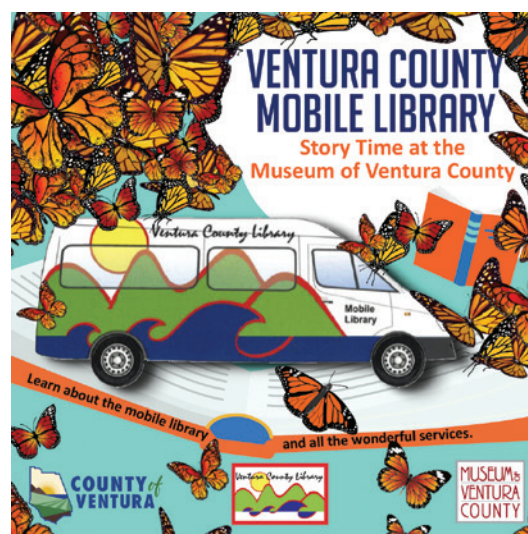
Ivor Davis: Up Close and Personal events	MVC/VIRTUAL
Weeds and Flowers Pop-Up exhibit and event	AG
What do Equity, Diversity, and Inclusion mean to You?: Ventura County Office of Education student exhibit	AG
Monarch Madness events	AG
Changemakers Panel	MVC/VIRTUAL

SUMMER (JUNE - AUGUST)

Play-Well Lego® Summer Camps	MVC/AG
Mindfulness at the Museum programs	MVC/AG
Always Keep Creating: The Resiliency of Carol Rosenak exhibit	MVC
Colorful County: A Spectrum of MVC's Permanent Collection exhibit	MVC
All That Glitters is Not Gold: Prohibition and Ventura County in the 1920s exhibit	MVC
Behind the Curtain: An Insider's Look at the George Stuart Historical Figures®	MVC
VUSD All Student Art Exhibit	MVC
Local History Happy Hour	MVC/VIRTUAL

FALL/WINTER (SEPTEMBER - DECEMBER)

Labor Day Tractor Fair	AG
Las Posadas	AG
Dia de los Muertos Celebrations and Altars	VIRTUAL/MVC/AG
De Colores Art Show	AG
Changemakers Panel	MVC/VIRTUAL





The best kept secret of Ventura County, your Museum, is fast becoming the most well-known source of history, art, fun events, educational activities and the **place to be!**

The COVID pandemic has been difficult for all of us but out of the challenges, MVC has been positively transformed. As a result of times where people could not gather in person, MVC pivoted rapidly to institute virtual, online programming which has become so successful that we

now consider it our third campus along with the main Museum in Ventura and the Santa Paula Agricultural Museum.

For example: in 2021, we had more than 112,000 web visitors, over 65,000 viewers and attendees of broadcast events and video content, and almost 2,200 children who, unable to visit the Museum for over ten months, participated in our history with interactive Zoom tours. At least once a month, regional professors, authors, and entertainers were brought straight into our living rooms, with more than 1,000 people participating via Zoom.

All of this activity has expanded the Museum's reach and impact. We on the board of directors know that online and digital programming should never go away: although it carries additional expenses, participants have been clear that virtual programs increase their opportunities to engage. As our society continues to evolve in these uncharted times, it is more important than ever for us to continue online programs so we can continue to serve all of you.

Please join me in celebrating the work of the Museum and our ever-expanding impact and reach into our community.

Warmest Regards,
Kate McLean
Chair, Board of Directors

BOARD OF DIRECTORS 2021-2022

Kate McLean, Chair
Westlake Village

William Kearney, Vice Chair
Ventura

Jessica Arciniega, Secretary
Oxnard

Mike Sedell, Treasurer
Simi Valley

Betsy Chess, *Ventura*

David Fukutomi, *Camarillo*

Leslie Leavens, *Ventura*

Al Lowe, *Camarillo*

Greg Monterrosa, *Agoura Hills*

Gabriella Navarro-Busch, *Ventura*

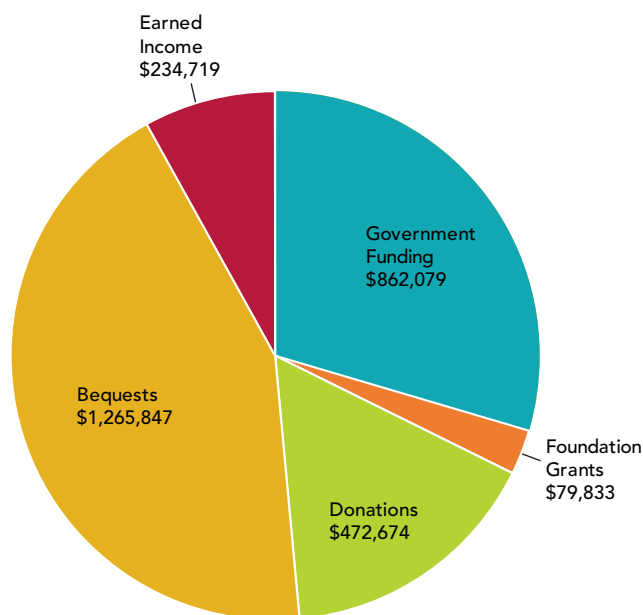
Tom Pecht, *Oxnard*

Richard Rush, *Camarillo*

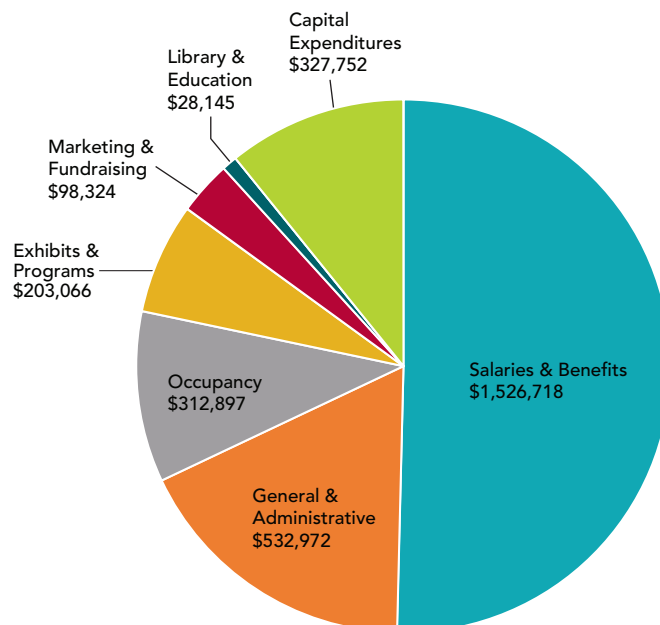
Jim Scanlon, *Santa Rosa Valley*

2021 FINANCIALS

INCOME \$2,915,151



EXPENSES \$3,029,874



Included in Government Funding is \$443,625 in Paycheck Protection Loan Funds that have been forgiven.

This financial information is prepared internally and is subject to audit adjustment.

The audited financial statements for the year ended June 30, 2021 are posted on the Museum's website.

INCREASING FINANCIAL SUSTAINABILITY

MVC has adopted a five-year strategic plan built on six pillars:

- Relevant programs
- Sustainable funding
- Compelling vision
- Robust partnerships
- Transparent governance
- Accessible collections

Without consistent and reliable funding, the Museum cannot achieve its goals. We are pleased to report that because of your help, we are on our way toward financial sustainability.

With pandemic related closures in 2021 MVC's focus has been on bolstering its endowment and maintaining prudent reserves. We have had success in both these arenas. The Museum's endowments provided distributions totaling \$321,379 and we have funded and maintained a reserve equal to three months of operating costs.

The success we have achieved thus far would not have been possible without the continued support of our government partners, Ventura County and the City of San Buenaventura. Both have pledged multi-year grants that enable MVC to forge forward by stabilizing operations and by delivering stellar programs and services. On behalf of the entire Ventura County community, we are grateful for this vital support.

MUSEUM MEMBERSHIPS SUPPORT FREE ADMISSION FOR ALL.

The Museum of Ventura County and the Agriculture Museum in Santa Paula are community hubs of art, history, entertainment, education, and more. As a member-supported organization, MVC relies on your philanthropic contributions to fulfill our mission.

As a Museum of Ventura County and Agriculture Museum member, you receive unique online and in-person experiences designed exclusively for members.

In 2022 we have a newly refreshed membership program for everyone. This new membership program offers you control over your member experience, including notifications of discounts with local businesses, alerts about new programs, and reciprocal benefits.

Feel free to contact us with any questions about membership:
(805) 653-0323 ext. 330 or membership@venturamuseum.org.

Benefits:

- Keeping art, history, education, and ideas available to everyone through free admission
- 15% discounts at Museum gift shops in Ventura, Santa Paula, and online
- Advance registration for select events
- Free or discounted admission to special events, receptions, and openings
- Annual member appreciation gift or event

Make a difference in your community by joining or renewing your membership.



MEET OUR NEW COMMUNICATIONS & MARKETING MANAGER



SANTIAGO ST. JAMES

Santiago is passionate about assisting arts organizations with compassionate missions and programming, and so has felt very much at home with the Museum of Ventura County. His work has included organizational development, social media management, donor management, and communications design. In 2021, Santiago was inducted by Ojai City Council to be on the Ojai Arts Commission. Prior to his work at MVC, Santiago helped manage Taft Gardens & Nature Preserve, where he helped lead their artist-in-residency program and renovate their online and in-person experience. Santiago received a BFA from Pratt Institute in Photography and Creative Writing.

BUSINESS CLUB & SPONSORSHIP INFORMATION



BUSINESS CLUB

Business Club members enrich the experiences of Museum visitors by allowing us to create relevant programming accessible to our community and beyond.

Demonstrate your organization's commitment to community by becoming a Business Club member, and enjoy exposure across MVC's e-newsletter distribution, our robust social media platforms, website acknowledgement, and more. We also offer benefits that your clients and employees will enjoy.

MVC offers Business Club memberships in a range of investment levels. For more information, please contact Development Director, Eric Knight at (805) 653-0323 ext. 305 or eknight@venturamuseum.org.

Thank you to our 2021 Business Club members:

- Aera Energy
- Al Lowe Construction
- Chrisman Estate, CO.
- E.J. Harrison
- Farm Credit West
- Index Fresh
- Leavens Ranches
- Limoneira
- Mechanic's Bank
- Pierpont Racquet Club
- TOLD Corporation
- Topa Topa Flywheelers
- Union Bank
- Ventura County Credit Union

SPONSORSHIPS

As a sponsor of the Museum of Ventura County and the Agriculture Museum, you help to bring acclaimed art exhibits, education programs & tours, relevant speakers and dialogues, archives accessibility, and much more.

Make a positive impact in your community now, by partnering with your Museum with a sponsorship. Opportunities to sponsor include:

- Free admission to your Museums
- Exhibits
- Educational programs
- Author talks, speaker programs, panel discussions
- Online content enjoyed by thousands of visitors every month

Sponsorships can be tailored to meet the unique needs of the individual or organization.

To inquire about sponsorship opportunities at the Museum of Ventura County please contact Development Director, Eric Knight at (805) 653-0323 ext. 305 or eknight@venturamuseum.org.

Major funding for these programs is made possible by the City of San Buenaventura, the County of Ventura, and private and community donors.



MUSEUM OF VENTURA COUNTY

100 East Main Street
Ventura, CA 93001
Phone: (805) 653-0323



THE AGRICULTURE MUSEUM

926 Railroad Avenue
Santa Paula, CA 93060
Phone: (805) 525-3100