

MUSEUM of
VENTURA
COUNTY

YEAR IN REVIEW

2019



STRENGTHEN THE FUTURE BY PRESERVING THE PAST



"We have an obligation to our members, donors, and participants that we take very seriously: to tell the truth, to tell the whole story, and to entertain as we enlighten."



Message from The Barbara Barnard Smith Executive Director Elena Brokaw



2019 was a fantastic year for your Museum.

MVC made real progress on its reinvention plan and took great strides toward ensuring its existence now and into the next century.

There is a scary reality in the world of museums: If we fail to become more attractive, more interesting, more RELEVANT, we will eventually—and probably sooner rather than later—become extinct.

That may sound like an exaggeration, but it is not. Only 16 percent of the population today is considered a “frequent cultural participant,” with “frequent” defined as going to a cultural event at least once every two years. One cultural experience in 730 days, and you are considered “frequent.” Can you imagine if Netflix had that level of customer participation?

Museums are generally considered exclusive. And there are many positive things about that label. Museums are trusted. The book *Presence of the Past* reports that museums are considered a more reliable source of historical information than books, teachers, or even relatives’ personal accounts. Museums are fantastic conservationists. There is a good reason you can’t touch things in museums—it’s so those things will be around for others to experience a thousand years from now.

But exclusivity can also mean that many people feel unwelcome and uncomfortable in museums, or that museums don’t tell stories that are relevant to them. Without new participants, museums may eventually disappear.

The team of people who develop and maintain your Museum—the Board, the volunteers, the staff, the interns—strive with everything they do to ensure that MVC thrives. One of the guideposts we use to show that we are on the right path is how many new people are visiting the Museum. I am happy to report that over the past year our events have been attracting new people we don’t know—people we have never seen nor heard from before are beginning to visit our beloved Museum!

After a November talk at the Museum, a CSUCI student wrote us to say: “I had the privilege of attending Dr. [David] Garcia’s lecture yesterday on his book. Thank you from the bottom of my heart for allowing me to see the good in the world and providing me the chance to be able to go on these experiences through Dr. Garcia’s inspirational work and words.”

This response reminds us why we do what we do, and that we have an obligation to our members, donors, and participants that we take very seriously: to tell the truth, to tell the whole story, and to entertain as we enlighten.

I hope you will find, as you read these pages, evidence that we are succeeding in meeting your goals for your Museum. And I promise 2020 will be even better.

A handwritten signature in blue ink that reads "Elena".

Elena Brokaw
The Barbara Barnard Smith Executive Director

Our Vision: Inspiring vibrant communities by connecting the past, present, and future.

Our Mission: The Museum of Ventura County, through its collections, exhibits, educational programs and publications, celebrates the history, art, and culture of Ventura County and the Channel Islands.

MUSEUM OF VENTURA COUNTY

CONNECTING CULTURE AND COMMUNITY



MVC HAS BEEN SAFEGUARDING OUR REGION'S HISTORY SINCE 1913.

Ventura County is a rare and special place. The terrain, climate, industry, and community have drawn settlers here for thousands of years, and the population continues to grow and evolve.

MVC, through exhibits, collections, education programs, publications, and events, communicates the essence of the region.

Every day, MVC works to inspire vibrant communities by connecting the past, present, and future. We look forward to sharing our efforts to achieve this vision in this Year in Review report for 2019.



RESEARCH LIBRARY AND COLLECTIONS DEPARTMENT

MVC embarked on a major accessibility project in 2019. In February, the Library completed an assessment to prioritize unprocessed collections and identify items for digitization. In June, through a partnership with California State University, Channel Islands, interns began work on digitizing photographs. Staff began work in August to overhaul the Museum's collections management policy and completed this work in December. Staff began work on unprocessed donations and has made good progress in cataloging these important community stories.

In December, the Library received a grant from *California Revealed* to digitize a portion of its historical journals, making them accessible online to the greater California research community and the world. The Library is happy to announce that over 500 photographs are now available online at photographs.venturamuseum.org and, through the work of volunteers, that number is growing every week. The Library has also been able to make important research documents available online, including the "Outland Indexes."

THE MUSEUM OF VENTURA COUNTY IN DOWNTOWN VENTURA

Since 1977, MVC has provided exhibits, classes, tours, programs, and events at its anchor site at 100 E. Main Street in downtown Ventura.

Open Tuesday through Sunday, 11 a.m. to 5 p.m. year-round, the Ventura site presents exhibits in the Fritz Huntsinger and Family Gallery, Fred W. Smith Gallery, Hoffman Gallery, Community Gallery, and the Helen Yunker Alcove. Programs and events are held in the Howard and Evelyn Burroughs Children's Garden, E.J. Harrison Family Courtyard, and the Toni Gardiner Cloister. The Martin V. and Martha K. Smith Pavilion features rotating exhibits, and private and public events. Fronting Main Street, MVC's downtown Ventura site has a large plaza that is used for community gatherings and celebrations.

Exhibits and programs here feature the art, culture, and history of our County. All of our offerings are designed to spark curiosity and encourage further learning about Ventura County and the region.



THE AGRICULTURE MUSEUM

Located in the historic Mill Building (1888) in downtown Santa Paula, the Agriculture Museum explores the region's farming and ranching history, engaging visitors with its broad collection of tractors, farming implements, a living beehive and interactive activity stations for children. These exhibits tell the story of the importance of agriculture in Ventura County and around the world.

CATALOGING NEW STORIES

While processing donations, we're learning powerful stories from artifacts that have been waiting to be cataloged, like this air raid warden helmet worn by Ojai resident Caroline Frost. Many of today's visitors think of WWII as something that happened "over there" and might not immediately think of all the ways war affected life on the home front in Ventura County.

After Pearl Harbor, the California coast was on high alert. Ojai Mayor Fred Houk created a Civilian Defense Council, appointing civilians as air raid wardens. Their job was to prepare friends and neighbors on what to do during an air raid. After a Japanese submarine entered Santa Barbara Channel and fired at a local refinery, fear and preparations intensified. During the routine blackouts that followed, air raid wardens patrolled the neighborhoods making sure all houses were pitch black and that light wasn't betraying the location of the city to enemy planes. Rather than taking shelter, wardens were on watch during the drills so helmets like this one protected the wearer from potential falling debris.



MEET OUR NEW LIBRARY, ARCHIVES, AND COLLECTIONS STAFF

KRYSTELL JIMENEZ, PROJECT ARCHIVIST

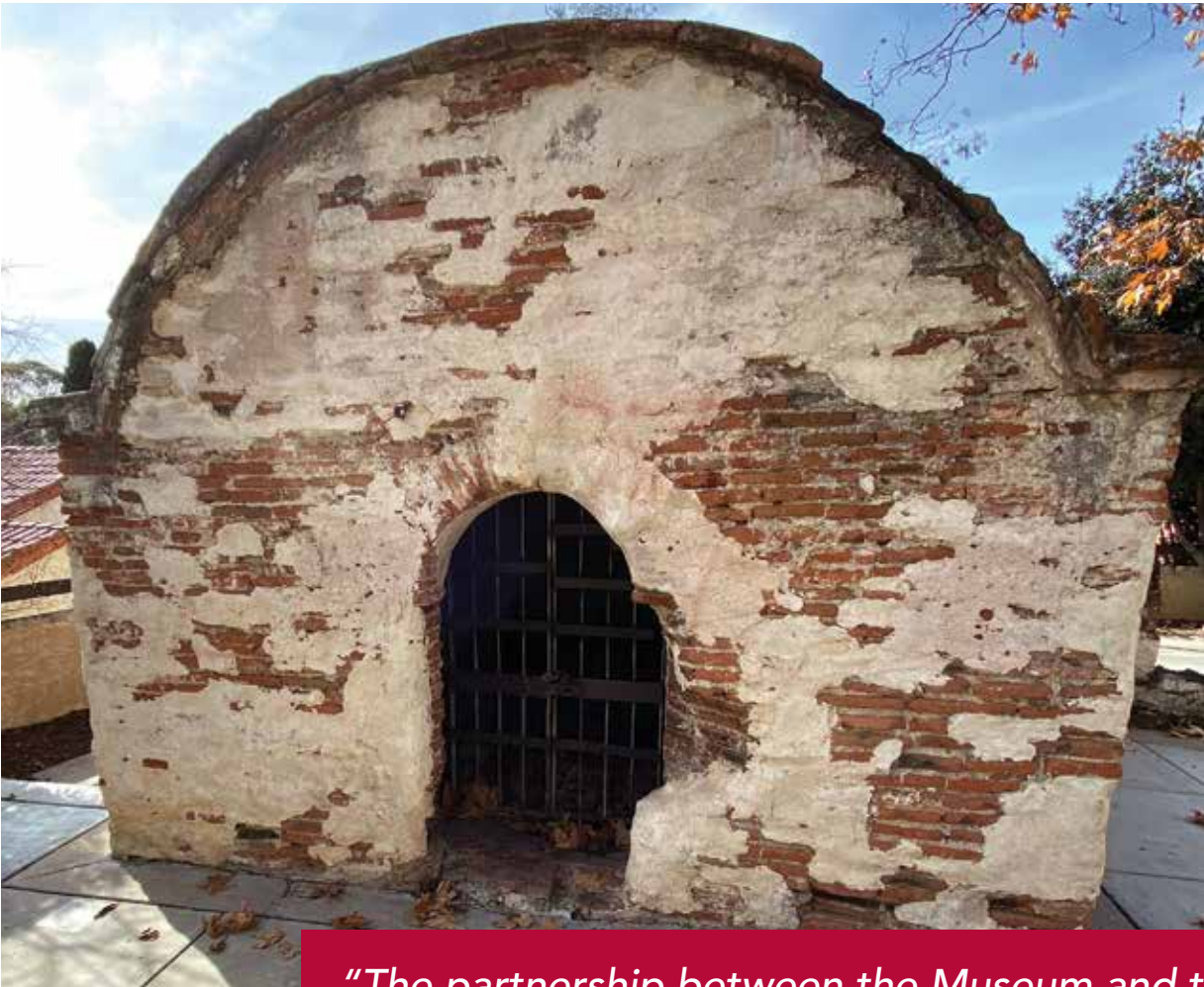
Krystell holds a master's degree in library and information science (MLIS) from the University of California, Los Angeles, and worked in special collections at UCLA before joining the Museum. While studying at UCLA, she interned with the Coalition for Human Immigrant Rights in Los Angeles.

MARCIA STOCK, CATALOGER ARCHIVIST

Marcia holds an MLIS from San José State University as well as a bachelor's degree in English from the California State University, Los Angeles. Marcia is working to make the Research Library and Archives Collection more accessible by taking on extensive digitization projects and managing the online catalogs.

RENEE TALLENT, SMITH-HOBSON FAMILY COLLECTIONS MANAGER

Renee has worked in museum collections for the past 10 years and specializes in preventative conservation and museum registration. Renee holds a bachelor's degree in history from Texas A & M University and a master's degree in museum science from Texas Tech University.



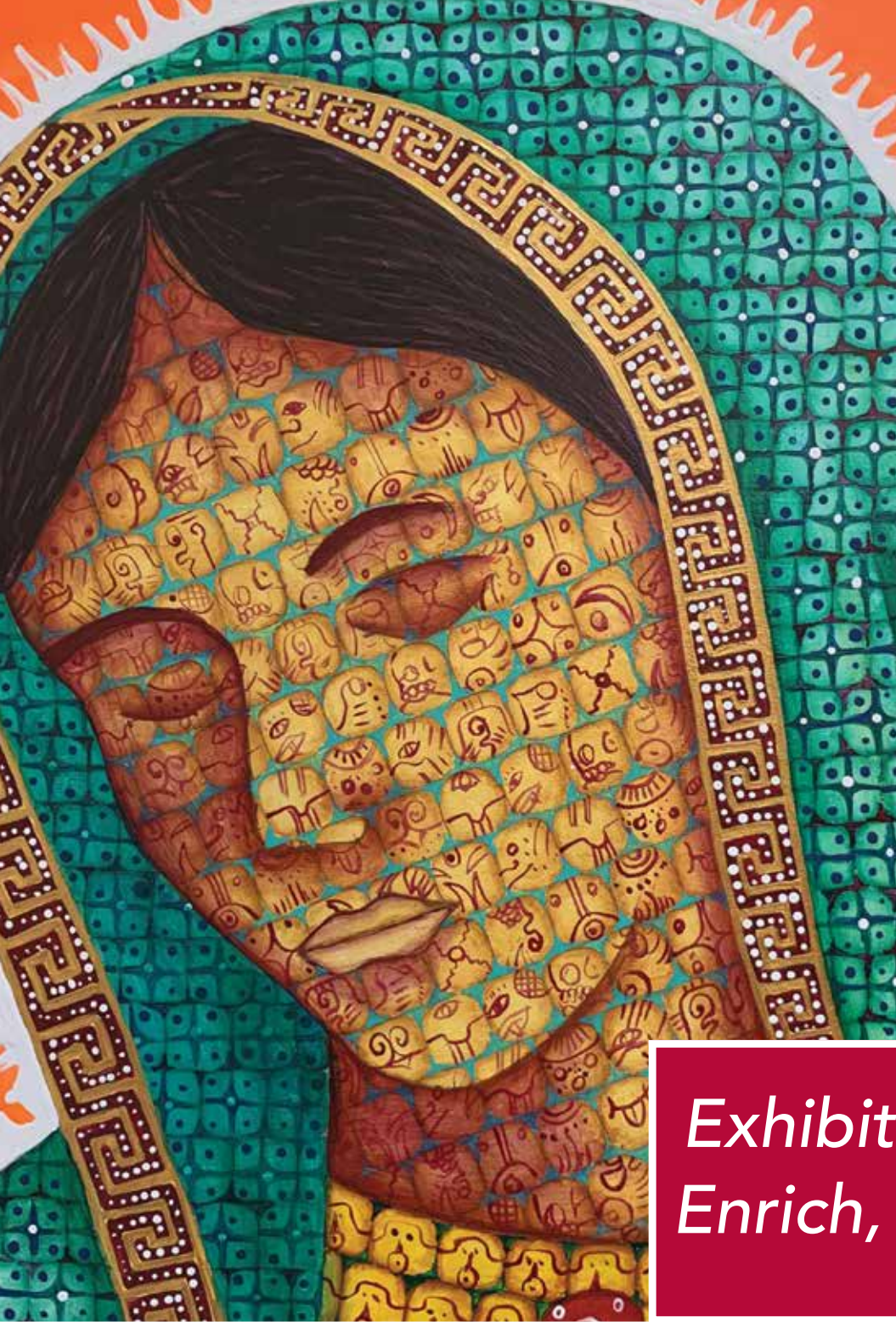
*“The partnership between the Museum and the City of Ventura to open the Albinger Archaeological Museum on a more frequent basis is an important gift for the community.”
— Councilmember Cheryl Heitmann, City of Ventura*

MVC 2019 ALBINGER ARCHAEOLOGICAL MUSEUM UPDATE

In 2019, the Museum of Ventura County partnered with the City of Ventura’s Community Partnerships Division to provide staff to expand hours and access to the Albinger Archaeological Museum. Located at 113 E. Main Street, this historic site is adjacent to Mission San Buenaventura and was once home to five different cultures spanning 3,500 years of history. In visiting the Museum, visitors learn about the Chumash Indians, Chinese immigrants and others who lived on the site by viewing displays, and archaeological objects and artifacts uncovered in 1974.

Displays of stone bowls, shell beads, arrowheads, bone whistles, crucifixes, bottles, buttons and pottery are housed inside the exhibit building. The surrounding grounds contain excavations of the foundation of the original mission church, Native American housing, a tomol (plank canoe reproduction), a water well and the oldest standing structure in Ventura County – El Caballo, the Mission’s water filtration building (pictured above).

The Albinger Museum is now open every Friday – Sunday, 11 a.m. – 4 p.m. Admission is free.



*Exhibits That Engage,
Enrich, Explore, Excite*



MUSEUM of VENTURA COUNTY

2019 EXHIBITS

THOMAS FIRE REFLECTIONS

MVC

**WRAPPED WITH CARE: THOMAS FIRE
QUILT RELIEF PROJECT**

AG

CHRIS HILLMAN: TIME BETWEEN

MVC

**THE DRAGON AWAKES: THE QING DYNASTY
GEORGE STUART HISTORICAL FIGURES®**

MVC

This exhibit showcased exquisitely detailed historical figures in elaborate costumes from Chinese history spanning centuries of leaders, dignitaries and everyday people.

**BUENAVENTURA ART ASSOCIATION
OPEN COMPETITION**

MVC

**DESIGN IN THE MAKING: VENTURA
COUNTY ARCHITECTURE**

MVC

Presented in conjunction with the American Institute of Architects Ventura County, this exhibit explored the dynamic role of architects and designers in affecting positive change in our community through the creative architectural design process.

SANTA PAULA'S TREASURED ARCHITECTURE

AG

BROKEN: A HOLOCAUST HISTORY IN FUSED GLASS

MVC

**DIVERSE AND DISTINCT: WORKS BY WOMEN
PAINTERS FROM THE MUSEUM'S PERMANENT
COLLECTION**

MVC

**VENTURA UNIFIED SCHOOL DISTRICT
ALL STUDENT EXHIBITION**

MVC

**ROTARY OF VENTURA: PERSPECTIVES
ON PEACE STUDENT SCHOLARSHIP**

MVC

WOMEN BEYOND BORDERS

MVC

**MUSIC BY THE MASTERS: VENTURA AND
OJAI MUSIC FESTIVALS**

MVC

THROWING SHADE: COASTAL LIVE OAK

AG

**IN THE FIELDS OF THE NORTH:
PHOTOGRAPHY BY DAVID BACON**

AG



FARMING YOUTH: WORKS BY LINO MARTINEZ

AG

**ACTUAL REALITY: MIXED MEDIA WORKS
BY CARLOS GRASSO AND PETER FOX**

MVC

**LOVE, WHAT'S IT TO YA? SCULPTURE BY
LYNN CREIGHTON**

MVC

**UNBRIDLED WITH THE COMPTON COWBOYS:
PHOTOGRAPHY BY COURTNEY ELLZEY**

AG

This inspired exhibit documented the work and mentorship of modern-day cowboys working with at-risk youth through the dramatic lens of Courtney Ellzey.

**CALIFORNIA COOL: MID-CENTURY
MODERNISM ON THE CENTRAL COAST**

MVC

Curated by MVC staff in conjunction with guest curators Eric Huff, Jordan Downs and Steve Aldana, this wide-ranging exhibit explored the region's popular design movement in interior and graphic design, architecture, and urban development between pivotal years 1945 and 1965.

**KALEIDOSCOPE KANDEO: BURNING MAN
INSTALLATION BY DENIZ NICOLE**

MVC

**ZEMPOALXOCHILT: MIXED MEDIA
WORKS BY LINO MARTINEZ**

AG

**BUENAVENTURA ART ASSOCIATION
COLLEGIATE EXHIBIT**

MVC

**WOVEN EARTH: CHUMASH BASKETRY
FROM THE MUSEUM'S COLLECTION**

MVC

VIRGENCITAS

AG



MUSEUM OF VENTURA COUNTY

ENGAGING COMMUNITY

2019 MUSEUM EVENTS

AGRICULTURE

- Junior Livestock Seminar
- Citrus Label Society Annual Meeting
- Agriculture Career Exploration Day
- Cesar Chavez and Farm Worker Celebration with Dr. Jose Alamillo

ART

- Modern Quilt Guild Quilting Demonstration
- Figure Drawing
- Kids Draw Architecture AIA
- First Fridays
- Women Beyond Borders Box Making Workshop
- ArtWalk Kaleidoscope Kandeo with Deniz Nicole

BOOKS/LECTURES

- *Great Forest Fires of 1917* Author Talk with Betsy J. Green
- *Ladies and Gentlemen... The Penguins* Author Talk with Ivor Davis
- *Bridges and Angels, The Story of Ruth* Author Talk with David LaBelle
- *Women's Stories from the Holocaust:* Frances Elson, Celina Biniatz, Inga Boldt and Lee Edwards
- *Archi-Vision: The Mystery, History and the Impact of the Labyrinth* Author Talk with Dr. Beverly Russell
- *What Architects Bring to Community Design* with panel moderated by Mark Di Cecco
- *Broken: A Holocaust History in Fused Glass* Artist Talk with Frances Elson
- *Spacecraft* Author Talk with Dr. Michael H. Gorn
- *Manson Exposed* Author Talk with Ivor Davis
- *The Oaks* Author Talk with Mitch Stone
- *Cheap and Thin: Neutra and Frank Lloyd Wright* Author Talk with Raymond Neutra
- *Walls that Talk: Murals of the 1930s* Author Talk with Santa Barbara Museum of Art's Lori Mohr
- *Strategies of Segregation* Author Talk with Dr. David G. Garcia
- *Uncompromised: The Lupe Anguiano Story* Author Talk with Debora Wright

GEORGE STUART HISTORICAL FIGURES® COLLECTION

Internationally renowned for their exquisite detail and historical accuracy, the George Stuart Historical Figures® represent important personalities of many historical periods. Along with American founders and patriots, groups of figures illustrate French, English, Russian, Chinese and Italian history and the conquest of the Americas. In 1979, Mr. Stuart donated 200 Historical Figures® to the Museum of Ventura County, and in 2010 the Museum commissioned him to create the Lone Woman of San Nicolas Island.



THE NIGHT OF THE NOSFERATU

The Night of the Nosferatu featured figures originally created for a staged performance in 1979 that told the fictional story about the bloodline of the original vampire, Count Dracula.



THE DRAGON AWAKES: THE QING DYNASTY

The Dragon Awakes featured leaders and dignitaries, such as Tzu-An Empress and Tao Kuang, and everyday people spanning centuries of Chinese culture.

2019 MUSEUM EVENTS

FESTIVALS AND EVENTS

- Free First Sundays Arts and Crafts
- Community Design: Thomas Fire Rebuild with David Ferrin, AIA
- Bridge Builder Award Gala honoring the Tom and Esther Wachtell family
- Mission Park Design Charrette with Nick Deitch, Main Street Architects
- Rotary of Ventura Scholarship Awards Reception
- Member Appreciation Day at the AG
- Bonita C. McFarland Scholarships Reception
- California Club
- Labor Day Vintage Tractor Fair
- Dia de los Muertos Remembrances and Fiesta
- Member Appreciation Day at MVC
- Las Posadas

FILMS

- *From the Ashes Up*: Thomas Fire Documentary
- *A Perfect Fire Storm*: Thomas Fire Documentary
- *Face of a Nation*: America's Presence in the World's Fair

MUSIC

- Chris Hillman: An Evening of Stories and Songs
- Brothers Fortune, Ag Museum Concert Series
- Ventura Unified School District Closing Reception and Student Concert
- Shaky Feelin', Ag Museum Concert Series
- MUNCH @ the Museum
- Sol Tree, Ag Museum Concert Series
- Salty Suites, Ag Museum
- Medicine Hat, Ag Museum Concert Series

POETRY

- Fire and Mud Poetry Reading curated by the Poets Laureate from Ventura County, Santa Barbara and Malibu





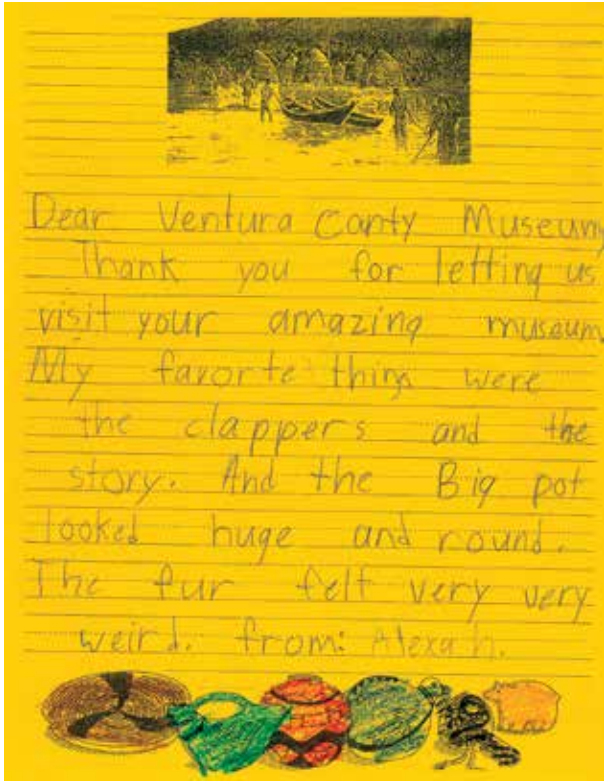
MVC COMMUNITY PARTNERS AND COLLABORATIONS

In 2019, the Museum of Ventura County sponsored more than 40 nonprofit partners in presenting programs benefiting the greater community. These diverse partner programs gave the public access to poetry, music performances, bicycle education, artist interviews, beekeeping best practices, storytelling, independent films, environmental talks and master gardening techniques. The Museum's 2019 community partners included:

- Acorn Project
- AIA Ventura County
- America in Bloom
- Camerata Pacifica
- Channel Islands Bicycle Club
- Channel Islands Chamber Orchestra
- Citrus Label Society
- City of Santa Paula
- City of Ventura
- Community Memorial Hospital
- Downtown Ventura Organization/Partners
- Fillmore Western Railway
- Focus on the Masters
- Friends of the Ventura County Library
- Future Farmers of America
- Interface Children and Family Services
- Make a Wish Foundation
- Modern Quilt Guild
- Ojai Music Festival
- Oxnard Union High School District
- Rotary of Ventura
- Rubicon Theatre Company
- Santa Clara Valley Hospice
- Santa Monica Mountains National Recreation Area
- Santa Paula Beekeepers
- Santa Paula Chamber of Commerce
- Santa Paula Historical Society
- SEEAG Ventura County
- Solo Press
- Soroptimist International of Oxnard
- Totally Local VC
- Topa Topa Flywheelers
- Townies Storytelling Project
- UC Master Gardeners
- Ventura Chamber of Commerce
- Ventura County Agriculture Commission
- Ventura County Arts Council
- Ventura County Library and Foundation
- Ventura County Office of Education
- Ventura County Star
- Ventura Film Society
- Ventura Land Trust
- Ventura Music Festival
- Ventura Unified School District

MUSEUM OF VENTURA COUNTY

2019 EDUCATION PROGRAMMING



K-12 SCHOOL AND FAMILY PROGRAMS

The Museum's education programs reached more than 7,000 children and family members in 2019. MVC provides curriculum-based and experiential programming that emphasizes art, history and STEAM content. This year, the education team of staff and docents served 4,374 low-to-moderate income K-12 students during tours, and an additional 2,792 children and family members during Free First Sunday educational events.

TEACHER TRAINING

MVC hosted a professional development workshop for 30 tenth- and eleventh-grade history teachers from Oxnard Union High School District. The workshop introduced teachers to the research library, collections, and exhibits archive while also providing training on how to integrate Museum content into history/social science standards for high school students.

INTERNSHIPS

MVC offers internships for students who want to gain professional experience in various aspects of operations and administration. In 2019, the Museum hosted interns from Ventura College, CSUCI, and Franciscan University of Steubenville, Ohio.

ARTS EDUCATION

Museum education staff provided arts and crafts activities and tours throughout the school year. Summer "Museum Kids" art programs were also offered at the Agriculture Museum and MVC.

Ventura Unified School District participated in the second all-student exhibit where artists shared their visual artwork and student musicians performed at the closing reception. Rotary of Ventura showcased student art in the Smith Pavilion and awarded \$10,000 in scholarships to local high school senior art students.

SCHOLARSHIPS

In 2019, \$4,000 in scholarships were awarded by the Museum's Fine Arts Committee to continuing high school and college students studying fine art, photography, and graphic design. The Bonita C. McFarland Endowment Fund provides this important scholarship funding.

ADULT DRAWING CLASSES

During the course of the year, over 400 people participated in free, monthly figure drawing classes led by local artist Ryan Carr.





MEET OUR NEW EDUCATION STAFF

BOB CROMWELL, EDUCATION MANAGER

Bob began his career in education as a Navy force protection trainer, then earned master's degrees in history (University of San Diego) and education (California Lutheran University). He served as an education coordinator with the National Park Service, and is now the MVC/AG education manager.



STEVEN KRISTEK, MUSEUM EDUCATOR

Originally from Southern California, Steven graduated from the University of Colorado, Colorado Springs, with a bachelor's degree in art history. An experienced informal educator, he enjoys sharing his passion for local history and agriculture as part of the Museum's education team.





BRIDGE BUILDER *Award Gala*

In 2019, the Museum presented the first annual Bridge Builder award gala. The Bridge Builder award celebrates the accomplishments of leaders who have made significant impacts on the region—those who have changed the fabric of our community, creating a new and better future.

On April 4, 2020, the Museum invites you to celebrate the amazing extended family of Isabel Winemiller and William Dewey Hobson. After arriving in Ventura in 1854, this remarkable duo and their many descendants forever changed the way we experience our environment. The accomplishments of this family are numerous and notable, including creating Ventura County in a hard-won legislative battle in 1872. This year's Bridge Builder award gala will be special and spectacular. Patron tables are available now.

For Patron table and sponsorship opportunities, please contact ebrokaw@venturamuseum.org.

On April 26, 2019, 200 guests gathered at the Museum to honor the Tom and Esther Wachtell family. The Wachtell family's commitment to philanthropy and to supporting our County's major institutions has forever changed our community's culture and environment. Guests enjoyed a reception in the Museum and galleries, dinner and the awards ceremony in the Martin V. and Martha K. Smith Pavilion, followed by dancing in the Plaza. The Bridge Builder award design was created by glass artist Frances Elson.

A LEGACY GIFT FOR THE FUTURE

PLANNED GIVING: THE EDITH HOBSON HOFFMAN SOCIETY

The Edith Hobson Hoffman planned giving program was created to enable our supporters to utilize tax-advantageous gift planning, and to give significantly to the Museum, while sustaining what they love most about the institution. The Museum of Ventura County is grateful to have received generous bequests in 2019 from Helen Yunker, Miriam Schwab, and Christina Allison.



HELEN YUNKER

Longtime Museum supporter Helen Yunker stepped up in 2016 with a financial gift and a call to action for others to help our Museum thrive.

"An institution of this importance needs financial giving from the entire community. I hope you will join me in helping to preserve our past and ensure the future of our museum."

Helen lived in and supported Ventura since 1958. She lived by the philosophy: "By helping and sharing with others, you multiply your own happiness and blessings many times over."

Helen passed away in 2018 at the age of 96, and in 2019, MVC received a major bequest from her estate, which has been used to create the Helen Yunker Collections Preservation Fund.

MIRIAM SCHWAB

Described as "unassuming," Miriam quietly left a bequest of over \$1.4 million to the Museum. Miriam, a champion of the arts, was active in Ventura music festivals and as a violinist with the Ventura College Symphony Orchestra.

The Museum of Ventura County is grateful to have received the bequest for the Miriam Schwab Fund, which supports operational priorities, as identified by the Board of Directors.



CHRISTINA ALLISON

Born in Brooklyn in 1939, Ms. Allison was a gifted soprano who trained in New York, claimed two Rockefeller grants, and sang with distinction with European opera companies for many years. In 1980, she married David N. Allison, whose mother's family, the Knapps, had long been prominent in Santa Barbara. After her husband's death in 2000, Christina continued to be active in her community, especially with the Santa Barbara Museum of Art and the Irish Historical Society, where she served as a Board member, and continued writing and performing until she passed away in 2018. In 2019 the Museum of Ventura County received a major bequest from the estate of Christina Allison which has been used to create the Christina Allison Fund.

EDITH HOBSON HOFFMAN SOCIETY MEMBERS

Lila Atkisson
Neal Barr
Mr. & Mrs. Robert F. Brown
Suzanne Chadwick
Bobbi and Donald Dufau
Linda and John Edison
Mary Anne Estes Ritchie
Gail and Bill Faulkner
James and Mary Galbraith
Nancy Hey
Pat Jump
Maggie H. Kildee
Dorothy Loebel

Laura Peck
MaryAnne Estes Ritchie
Brian and Judy Robertson
Tommy Slater
Matthew and Nancy South
Martha A. Spriggs
Thomas and Esther Wachtell

Eunice Manning Koch
Isabel Levitt
Dorothy Novatt
William L. Orcutt
Bonita Celeste McFarland
Miriam Schwab
Edith Wald
Ilse Weile
Helen M. Yunker

IN GRATEFUL MEMORY:

Christina Murphy Allison
Eleanor S. Armstead
Howard Boroughs
Lincoln and Terry Cryne
E. Louise Gooding



Edith Hobson Hoffman

If you have included the Museum of Ventura County in your will or estate plans, please let us know so that we can give you proper recognition. To explore planned giving options, please contact the Development Department at (805) 653-0323 ext. 305.

MEET OUR NEW DEVELOPMENT STAFF

ERIC KNIGHT, DEVELOPMENT DIRECTOR

Eric joined the Museum in July 2019. He comes to MVC from the Ventura County nonprofit sector, most recently managing a portfolio of new business income development at the American Cancer Society. Eric received his Bachelor of Fine Arts from Columbia College, Chicago; completed training at the Coaches Training Institute; and graduated from the Ventura County Leadership Academy in cohort XXIV.

ENDOWMENT FUNDS

THE BARBARA BARNARD SMITH MUSEUM OF VENTURA COUNTY EXECUTIVE DIRECTOR FUND

Supports the Museum's long-term stability by providing funding for its Executive Director position. Established 2017.

BERRY RESEARCH LIBRARY FUND

Supports the acquisition, conservation, storage, display, and accessibility of historical library materials. Established 2006.

BONITA C. MCFARLAND FUND

Supports the purchase and exhibit of fine art, promotes appreciation and awareness of art, and awards one or more scholarships annually to art students. Established 1990.

CHRISTINA ALLISON FUND

Supports operational priorities, as identified by the Board of Directors. Established by bequest 2019.

HARDISON KIMBALL THILLE FAMILY FUND

Supports operational priorities, as identified by the Board. Established 2017.

HELEN YUNKER COLLECTIONS PERSERVATION FUND

Supports the Museum Research Library and Collections Department, and exhibits of materials from these areas. Established by bequest 2018.

KAREN AND TOM PECHT FAMILY FUND

Supports operational priorities, as identified by the Board. Established 2018.

MIRIAM SCHWAB FUND

Supports operational priorities as identified by the Board. Established by bequest 2018.

MUSEUM OF VENTURA COUNTY—AGRICULTURE MUSEUM ENDOWMENT FUND

Supports the Agriculture Museum. Established 2019.

MUSEUM OF VENTURA COUNTY ENDOWMENT FUND

Supports Museum operations. Established 2001.

MYRA AND RONALD BANK FAMILY FUND

Supports operational priorities as identified by the Board. Established 2009.

SMITH-HOBSON FAMILY COLLECTIONS MANAGER FUND

Supports the Collections Manager position. Established 2019 by Jeff Smith, Marilyn Cassidy, Barbara Stupay, and Greg Smith.

TOM AND ESTHER WACHTELL FAMILY FUND

Supports the exhibit of works from the permanent collection. Established 2018.

VCMHA SMITH GALLERY ENDOWMENT FUND

Supports the purchase, maintenance, and restoration of the George Stuart Historical Figures® Collection, and/or repairs and improvements to the Fred W. Smith Gallery. Established 1992 by Barbara Barnard Smith and Helen M. Smith.

ENDOWMENT FUND CONTRIBUTORS

We thank the many generous donors who have made contributions to the Museum of Ventura County Endowment Fund:

Lila Atkisson

Mr. & Mrs. Robert F. Brown
In memory of Bob and Betty Pfeiler

Nancy Gallagher

Nancy and Spencer Garrett

Index Fresh, Inc.

William and Elise Kearney

James Lloyd-Butler
In memory of Cynthia M. Lloyd-Butler

Patrick Lloyd-Butler

Martin V. & Martha K. Smith Foundation

Brianne McGrath

Barbara S. Meister
In memory of Larry Meister

Mr. and Mrs. John J. Menne

John and Stephanie Orr

Tom and Karen Pecht

Andrea Pfister
In memory of Edith Hobson Hoffman

Allan M. Pinkerton Family

Barbara Barnard Smith

Dorcas H. Thille
In memory of the Hardison Kimball Thille Families

Thomas and Esther Wachtell

Janice Petit Willis

THANK YOU TO OUR SUPPORTERS

The Museum of Ventura County gratefully acknowledges the following individuals, foundations, organizations and businesses for their generous support of the Museum.

\$250,000+

City of San Buenaventura
County of Ventura
Estate of Christina Allison
Estate of Helen M. Yunker

\$75,000 to \$249,000

Martin V. and Martha K. Smith Foundation
Allan Pinkerton Family
Dorcas Thille

\$25,000 to \$74,999

Mr. and Mrs. Robert Brown
Charles D. and Mary A. Bauer Foundation
The Heritage Fund at VCCF
John and Stephanie Orr
Thomas and Esther Wachtell
Janice Willis

\$10,000 to \$24,999

Mimi and Philip Allin (DVC)
Lila Atkisson (DVC)
Baltoro Trust
California Oaks Property Management
Gail and Bill Faulkner
Finch Family Foundation
Nancy and Spencer Garrett
Index Fresh, Inc.
William and Elise Kearney (BOD)
Leavens Ranches, LLC
Oro del Norte, LLC
Tom and Karen Pecht (BOD)
Mary Schwabauer (DVC)
Smith-Hobson Foundation
The Gene Haas Foundation

\$5,000 to \$9,999

Aera Energy, LLC
James and JJ Birkenshaw
Ellen Brokaw
Family of Helen Pidduck

Fred and Susan Ferro
Rod Gilbert
Hoffman/Haley Marina Village, LLC
E.J. Harrison & Sons
Jim and Mary Harrison
Thomas and Cathryn Krause
Jordan Laby
Leslie Leavens (BOD)
Limoneira Company
John and Gayley McConica
Mechanics Bank
Gretchen and Marshall Milligan
Montecito Bank & Trust
Judith Munzig
Andrea Pfister (V)
Dan and Susan Pinkerton
Dr. Barbara Barnard Smith
Rebecca and Jeffrey Smith
Gregory and Shelley Smith
TOLD Corporation
Ventura County Community Foundation
Whitten and Sally Yount

\$1,000 to \$4,999

Casey Appel and Tracy Albert
Jessica Arciniega and Tomas Hernandez (BOD)
Barney and Kate Barnhart
Arthur Bliss and Toy White
Elena Brokaw and Pat Miller (S)
Peter and Gabriella Busch
Nina Butler
California Resources Corporation, LLC
Claire Carty
Betsy Chess (BOD)
Christopher P. Fowkes Memorial Fund
Todd and Cheryl Collart
Conrad N. Hilton Foundation
Andrea Contarino (S)
Freddie Contarino
Jorge Corralejo
CSU Channel Islands Foundation
Mr. and Mrs. Milton Daily

Docent Council of the Museum of Ventura County
Mrs. Marcia Donlon
Bobbi and Donald Dufau
Linda and John Edison
Katherine and Michael Enright
John and Diane Flynn
Nancy Gallagher (DVC)
Jurgen and Gerry Gramckow
Linda Hadlen (DVC)
Jim and Tish Harris
Carolyn Hertel
Chris and Connie Hillman
Thomas and Genevieve Hinkle
James and Teresa Holden (DVC)
Lydia and Tommy Hopps
Thomas Hutchinson
Debbie Jackson
Linda Kimbrough (DVC)
John and Carol Lamb
J. Link and Sally Leavens
Lloyd Properties
James Lloyd-Butler
Dorothy Loebel
Al and Petra Lowe (BOD)
Laura McAvoy and Sol Chooljian
Kate McLean and Steve Stone (BOD)
Margaret and George Melton
Jane Meyer
J. Roger Myers and Katherine Stone
Gary and Vicki Nichols
Maria Ortiz
Laura Peck
Susan Petty
Ron and Linda Phillips
Carolyn Pidduck and Marc Soltan
Pierpont Racquet Club
Bruno and Victoria Pozzi
Elaine and Larry Rasmussen
Rasmussen & Associates
Brian and Judy Robertson
John and Dianne Ruby
Richard and Jane Rush (BOD)
James and Maureen Scanlon (BOD)
Dietrich and Valerie Schmidt
Barton and Pamela Schuman
David Schwabauer and Michael McMahan
Mike Sedell (BOD)
Bill and Jill Shanbrom
Sidney Stern Memorial Trust
Mike Silacci
Denise and Jim Sindelar (S)
Pam and Samuel Small
Mary Stewart (DVC)

Betty Swift
The Benevity Community Impact Fund
The Sence Foundation
Topa Topa Flywheelers
Barbara Topping (DVC)
Judith Triem and Mitch Stone
Janice Turner
Theresa Tyndall
Craig and Sara Jane Underwood
Union Bank
University of Southern California –
The Center on Philanthropy
and Public Policy
Susan Van Abel and Eric Oltmann
Linda Velthoen (DVC)
Ventura County Credit Union
Ventura Rental Party Center
Wendy Wachtell
Roz Warner and Michael Hogan
Keith Westcott
Jonathan and Monica White
Miriam Wille
Taylor and Tom Wolfe
Hiroko Yoshimoto
Peter Zierhut (BOD)

\$500 to \$999

Arthur Nichols Ranch
Dr. and Mrs. Albert Amorteguy
Allan and Jyl Atmore
Edward and Jill Banman
Yissel Barajas and
Jaime Fernandez (BOD)
Don and Deborah Barker
James and Carolyn Bennett
Mary Bergen
William and Joanne Bowie (DVC)
Peter Boyer
Grace Brandt
Brokaw Nursery, Inc.
California Lutheran University
Don and Bonnie Carlton
Patti Channer
Joseph and Valerie Chrisman
Coast Reprographic Co, Inc.
Charles and Eloise Cohen
Community Memorial
Health System
David Cook and Reta Tyree
Daniel and Janet Crotty
Lucinda Daley
Jane Delahoyde and
Edwin Clark
Jayme Dwyer
Richard Esparza and
Lauraine Brekke-Esparza
James and Kris Finch
David Fukutomi and
Jennifer Lynch (BOD)
James and Mary Galbraith
John and Margaret Given

Ross Goodman and Ilse Lang (DVC)
Linda Greene
Margo Haas
Hinricher, Douglas & Porter, LLP
Harvard and Helen Horiuchi
Ellen Israel and Norman Flam
Lawrence Janss
Dennis Jurcak
William Lenox
Geri Levine Loe
James and Cynthia Ludwig
James Maddux
Mary McGrath
Roz McGrath
James Monahan and
Glenda Cardona (DVC)
Frank and Susan Naumann
Vivian and Tom Nelson (DVC)
Ojai Oil Company
Robert Olszewski
James and Linda Peddie
Jane Pidduck
Richard Pidduck
Judi and Ron Polito
Bob and Norma Privitt
Rotary Club of Moorpark
Jaime and Toni Santana
Don and Ann Scanlin
Kathleen Sisson (DVC)
Staples Construction Company
Tony and Anne Thacher
The Becker Group, Inc.
Edward and Jane Waters
Phil and Suzanne White
James and Alberta Word (DVC)

\$250 to \$499

Moustapha and Joanie Abou-Samra
Susan Adamich
Ashley & Vance Engineering, Inc.
Everard and Brooke Ashworth
Richard and Bonnie Atmore
Cornelia Baer
Bryce and Elaine Bannatyne
Barbara Barraza and Alberto Ordonez
Paul Belmont
Supervisor Steve Bennett
Michael Binsley
John and Kai Blanchard
Buz Bonsall and Marcia Morehart
John and Cherie Brant (DVC)
Rene Briggs
Gerry Browning (DVC)
Michelle and Jim Butterbaugh
James Capito
Tom and Patty Carmody
Charles and Maryrose Caspary
Suzanne Chadwick
James Chrismen
Harriet Clune and Richard Stewart

Matthew Cook
Ann Cooluris
Dennis and Sybil Coyner
Dave and Jeanette Curci
Duane Dammeyer
Nan Drake
Dullam Nursery
Estate of Eleanor S. Armstead
Edward and Frances Elson
Bill and Karen Evenden
Michelle Fieler
Bryan Fisch and Carrie Rothstein-Fisch
Anthony and Edie Fowkes
Richard Francis
David and Faith Friedlander
Howard Gabbert
Richard and Mary Gallagher
Liz and Art Gaspar
Donald and Virginia Grainger
Grether Farming Company, Inc.
Thomas Hardison
Barbara and Larry Hilburn (DVC)
Clyde and Lynne Hofflund (V)
Doug and Julie Kays
Joan Kemper
Margaret Kimball and William McPheron
Jim and Sue King
Patricia Kong-Slater
Lake Casitas Boat Rentals
Thomas and Barbara Laubacher
Dan Long and Karen Flock
Craig and Nancy Marcus
Lawrence Markworth and Susan Pollack
Ruth Maulhardt
Edward McCombs
Rosena McConica
Bob and Della McCord
Sharon McGahan
Debra McKillop
Walter McKinny
Barbara Meister
Ernie and Suzanne Melonas (DVC)
Donald and Rena Mills
Carl Morehouse and Janna Minsk
Burton and Irene Munger
Brenda Nakagawa
Neel Lighting & Controls, Inc.
Oxnard Lemon Company
Peter and Rebecca Percy
Steven and Diane Perren
Susan Peterson
Ron and Martha Picciotti
Michael Putman and Marge Karney
Richard Quint
Roxie Ray
Lois Rice
Barbara Rose
Stephanie Roth
Nils and Beverly Rueckert

MUSEUM OF VENTURA COUNTY
Thank You To Our Supporters

Mary Lou Rusnik
Michael and Mary Shore
Martha Spriggs
John Thacher
Adela and Ken Trainor
Tyler and Patricia Tugwell
Ventura College Foundation
Carol Wharmby
Douglas Wied
Sylvia and Duane Wikholm (DVC)
Kelly and Robert Wilmer
Larry and Elizabeth Wolfe
Jack Wood
Wilhelmus and Johanna Zwinkels

\$100 to \$249

Brian Aikens
Judi Allen (DVC)
Wendell and Denise Allen
John Allred and Michele Willer-Allred
Marta Alvarez
Victoria Ammons and Elizabeth Ammons
Annette and Rinaldo Baietti
Gary and Nancy Barber
Penelope Barnds
Suzanne Barnes
Regina Barnes
Neal Barr
Illona Battaglia Aguayo
Barbara Beach
Denise Beckendorf
Calvin and Gail Beeker
Daniel Begalla
John and Kathleen Behne
Carolyn Berenson
Eric and Kathleen Bergh
Raoul Berke
Bernard and Eugenia Bernacchi
Ken and Sue Birdsall
Jane Blackman (DVC)
John and Nancy Borchard
Dolores Borchard and Family
Caryn and Charlie Bosson
Robert Bothamley
Jo Bowers (S)
Diana Boydston
Ralph Brand
Berkeley Brandt and Sharon Heintz
Marni Brook
Robert Brooks
Barbara Brough
Jerry and Gail Brown
Marla Brown
Elizabeth Bugg
Donna Burger
Jim and Janet Bushong
Rachel Cahill
Victoria Camara
Jesus and Virginia Camarillo
Joyce Cantrell and Caryl Cantrell (DVC)

Mike Capesius
Linda Carson
Constance Casavan (DVC)
Candace Cassidy
Elaine Cavaletto
John Cinatl
Jill Coffan
James Colborn
Charles Cole
Carol Cole
Angela Colicchio
Roberta and Dan Cordell (DVC)
Tracy Cortez
Lynn Creighton
CSU Channel Islands Library
Curran and Joy Cummings
Gregg and Margaret Cutler
Kenmere and Robert Davidson
Carol and Larry Dawes
Catherine De La Torre
Paul Dentzel
Richard and Ellen Devericks
Jim and Elaine Donovan
Robert and Linda Donovan
Patti Douglas
Mrs. Philip Drescher
Robert Dudley
Barbara Dupree (DVC)
Pamela Duty
Paul and Joann Dwork
E.P. Foster Library
Ebell Club of Santa Paula
Marcia Edwards
Ann and Chuck Elliott
Diane Ellis
Nancy Escher
Joann Evans
Ben Faber
Facebook
Donna Fairfield
Farm Credit West
Martha and Scott Flournoy
Harold and Harriet Friedman
Paul Friedrich
Dr. Stanley and Heidi Frochtzawajg
Johanna Gabbard and
Michelle Boroski
Doug and Nancy Garrison
Lynn Geller
Sandra Gelso
Andrew Gilmour
Lynn Goldsbrough
David and Jessica Goldstein
Jim and Kelle Green
Donald and Sandra Greenberg
Wylie and Janet Greig
Michael and Beverly Grojean
Kathryn and Grant Gullickson
Virginia Gunderson

Jack and Beverly Halpin
Sheryl Hamlin and Marshall Roath
Annie Hankinson
Linda Haque
Barbara Harison
James and Mary Harrison
Cynthia and Tom Hashbarger
Craig and Denise Held
James Heller
Marvin Hellwitz
Mary Alice Henderson
Dave and Kathy Henri
William Herbert
Valerie and Eric Herzig
Jessica Hibbs
Kay Hill (DVC)
Stephen and Carolyn Hiller
Richard and Alice Holst
Mary Sue Horgan
Philip Horowitz
Dennis and Arlene Horwitz
Charlotte Hoyt
Wayne and Nancy Huff
Jeanne Hunt (DVC)
Donald and Carol Hurley
James Hurst
Stephanie Imhoff
Gosta and Mary Iwasiuk
Mark and Carri Jacobs
Marilyn Renee Johnson
Larry and Priscilla Jones
Bill Joseph
Carlos and Heidi Juarez (V)
Josh and Mary Kay Kaufman
Mike and Merrie Kelley
Michael and Linda Kelly
Maggie Kildee
Don and Mona King
Alan Kirschbaum
Karen Kirschenbaum-Reynosa
Suzanne Kitchens
William and RoseAnn Klope
Eunice Koch
John Krist
Panda Kroll
Allan Kurihara
Lucien Lacour and Carol Howe
Marie and Douglas Lakin
Carol Lamb
Jeffrey Lambert and Albert Barosso
Nancy Lander
Amber Landis and Jon Stover
Anita and Haady Lashkari
Chase Lichtenstein
Lightning Ridge
Carol Lindberg
Janet Lindgren
Timothy and Kathryn Linman
David Loe and Tisha Longoria

Lois and James Lovins
Rockwood Ludes
Nelly Mac and Paul Edwards
George Magana
Rosemarie Magness (DVC)
Frances Mahan
Eileen and Jim Maher
Marcia and Brad Marcus (DVC)
Edward and Mimi Maring
Walter Marriott, Jr. and Peggy Guinn
Lisa Skyheart Marshall
Maulhardt Properties Company
Joanne McDonald
John and Lisa McGee
Phil and Joanne McGrath
Tom and Gerri McMillin
Neale and Sue McNutt
Michael and Linda McTigue
Mr. and Mrs. John Menne
Kenneth and Lynn Merideth
Jay and Jean Midgley
Robert Milazzo and Mary Stanistreet
Sheldon and Beth Miller
David and Carole Minkin
Leo Molitor
Judy Moore
Lorenzo and Connie Moraza
Susan Morgan
Kioren Moss
Dale and Ted Muegenburg
Neva and Victor Munoz
Ben Namba and Julia Campbell Namba
Joanna Newton
Barbara Niles (DVC)
David and Margaret Noble
Gina Norstedt
James and Cathy Nye

Marietta O'Farrell
Thomas and Mary Olson
Ann Oppenheimer
Warren and Gail Paap
Bill and Francie Parr
Catherine Penprase
Arturo and Amada Perez
Arlene Pinkerton
Don and Jane Pinkerton
Roberta Pittman
Pleasant Valley Historical Society
Terry Poland
William and Linda Ramelli
Robb Randall
Virginia Randolph
Eleanor Rasnow
Robert and Norma Rich
Mary and Tom Robinson
Cliff Rodrigues
Sabrena Rodriguez and Andrei Bobrow
Michael Rohde
Larry and Lisa Rose
Lynn Ross
Ursula Rowe
Ric and Penny Ruffinelli
Joseph Rund and Alfonso Reta
Edward Russell
Lisa and John Sachs
Sandra Sanders (DVC)
Joyce and Bruce Schoppe (DVC)
Lawrence and Cindy Schwartz
Yvonne Seabold
Seasons Catering, Inc.
Louise Sharp (DVC)
Bonnie Shelton
David Shilton

Gale Shoemaker
Eco and Dirk Shumaker
Steve and Shirley Simms
John and Debbie Simpson
Marta Smith
Dr. William S. Spellman
James and Faith Stevens
Edward Summers
Eric and Lori Swanson
Bruce and Tobey Tabor
Connie Taft
Sheila and Rick Tate
Robert Thompson
Thousand Oaks - Library Serials/AC
Timeless Floor Company
Marian Totheroh (DVC)
Terrence and Karen Towner (V)
Margaret Travers
University of California - Bancroft
Library Acquisitions
Ray Vargas
Patty and Michael Velthoen
Ventura Unified School District
Retirees' Committee
Louis and Rosemary Vigorita
Mary Volpe (DVC)
Madeleine Waddell
Charles and Blake Wade
Bruce Walker
Adele Walsh
Michael Ward
Robert Warnagieris
Jeanne Warren
Tessa Weeks (DVC)
Joyce Wiechert
Pat Wiker



BECOME A MEMBER TODAY

Become a member of the Museum of Ventura County and discover the rich heritage of our region at two of Ventura County's most vibrant cultural sites—the Agriculture Museum in Santa Paula and the downtown Ventura campus.

Member benefits include free Museum admission, free or discounted admission to events, lectures, and classes. Membership also supports Museum education programs, maintenance of the collection and facilities, and the Research Library. And you will be making a vital investment in your community.

For more information and to become a member, please contact the Membership Department at (805) 653-0323 ext. 330 or visit venturamuseum.org.

MUSEUM OF VENTURA COUNTY
Thank You To Our Supporters

Michael and Evelyn Williams
Leah Willis
Gary and Ann Wolfe
Gerald and Cynthia Yoshitomi
David Young and Jill Forman
Kathleen Zahniser
Francois and Mary Zugmeyer

Under \$100

Greg Abbott
Kathy Abbott-Mayer
James and Joanne Abing
George Abrams and
Martha Symes-Abrams
Neal Abramson
Jane Advani
Jose Alamillo
Mark Allen
Kerri Anderson
Arne Anderson
Susan Andrews
Betty Anear
Lupe Anguiano
Darlene and Patrick Arcadi
James Arellano
Judy Armstrong
Shirley Armstrong
Mary Arnold
Kathy Asher
Shawn Atin
William and Carol Aulich
Randall and Joanna Axell
Mary Ayers
Lois Bach
Elizabeth Bachman and Robert Tallyn
Marie Baez
Janet Bagby
Steven Bailey
Nick Baker
Tony Baker
Sandi Banks
Eleanor and Michael Banner
Marion Baranowski
Richard Barbar
Jeff Barber
Joan and Mike Barminski
Steven and Denice Barr
Sue Barrera
Chris and Linda Bartelson
Lauren Bassing
Marie Battle
Mary Jane and Richard Bauleke
David Bayer (V)
Virginia Beale
Barbara Bean (DVC)
Ben and Megan Beatie
Katherine Beattie
Nancy Bejune
Bancroft and Esther Benner
Steve Bennett and Leslie Ogden

George and Joy Berger
Irving and Arlene Bergman
Nancy Berry
Sharon Best
Wayne and Pauline Biesecker
Dr. and Mrs. Amir Biniaz
Norman Blacher
Jeanne Black
Judy Blades
Donna Blasius-Pitzler
Lynda Blue
David and Alexis Boeshaar
Sue Bolton
Clark Bond
Mark Boogren
John Borneman and Linda O'Neill
Diane Bovee
Bonnie Bowen
Bill Boyd
Jean Boyer
Roland Boys
Drew and Marcia Brahos
Bob and Mary Braitman
Geffrey and Alice Braun
Kathleen Briggs
Karin Brinkley
Jerry Brown
Karen Brown, Ph.D.
Mike Brucker
Vella Buchanan
Sandra Buechley
William and Patricia Bullough
Deborah and Vincent Burns
Carol Bury
Patricia Butler
Ernest and Rosalee Calvillo (DVC)
Allen and Marilyn Camp
Douglas and Christine Campbell
Faye Campbell
Leticia Carabajal
Glenda Cardona (DVC)
Danny Carmichael
Chuck Carter
Bernard and Madeleine Carteron
Van and Vicki Carver
Roger Case
Cynthia Cavazos
Virginia and Pete Celeste
Gabriel Chacon
Craig Chambers
Janice Chan
Patty Chan
Pamela Chan
Joshua Chancer
Russ and Linda Charvonina
Amy Cherot
Karen Cherry
William Chilcutt
Erwin Clahassey

Tyson and Kim Cline
Nova Clite and Neal Schleimer
Alana Coghlan
Barbara Colavito
Susan and Robert Colla
Jean Collins
Helen Collins
Brigitte Colzani
David Combe and George Medeiros
Mary Comstock
Dale Condra and Carolyn Briggs
Roger Conrad
Colleen Conway
Joan Cook
Linda Corrigan
Charles Covarrubias
Doris Cowart
Camille Crawford
Jim and Donna Cruz
Wesley Cullins
Steve and Debra Cummings
Sharon Cunningham
Eileen Cusimano and Mary Smith
Nicole D'Amore
Julie Dahl-Nicolle
Noel Daily
Ivor Davis
Gary and Bonnie Davis
Jackie Davis
Curt and Carolyn Davison
Deborah Dawson
Adriana De Haan
Rich and Ginny Deppe
Diane and Marti Dibble
Mary and Joseph DiCesare
Ron and Barbara D'Incau
Patricia Clark Doerner and
John Williams
Steve and Caroline Doll
Mary Dolliver
Teresa Donegan
Ann Donlon
William and Mary Kay Doubek
Joanna Dovalis
Beverly Drapeau
Karen and Robert Draper
Lee and Cheryl Draughon
Judy and Dan Dugan
Judith Dumas
Keith Duval
Dennis and Jane Dwire
Marisue Eastlake
David and Teri Edsall
Elaine Edwards
Lauraine Effress
Joan and Bob Egbert
Norma Ekman
Carrie Eller
Carol Eller

Florence Elwell and Diane Martinez
Deloris Emerson
LaVaughn Engblom
Charles and Cheryl Engel
Linda England
Adolfo Escoto
Laura and Victor Espinosa
Barbara Evans
Todd Everett
Peter and Patricia Fallini
Tom and Joan Faragher
Christine Farro
Bill and Kate Faulkner
Richard and Marcia Fausset
Donald Fay
Beryl Feller
Joanne Fields
Marge Figurski
Roy and Lois Fischman
Linda Fisher
Shirley Fitzgerald
Judy Fleischman
Geraldine Fletcher
Kevin and Stephanie Flint
Mary Follenweider
Shelly Foote (V)
Frank Foster and Julie Hedrick
Sheila Fountain
Naomi Fowler
Rebecca Fox
Emily Fox
Mark Fox
Richard and Yvette Franklin
Kathy and Jim Franklin (V)
Gwendolyn Fraser
Helen Fredell
Lois Freeman-Fox
Jim Friedman
Laura Gallardo
Sonia Garcia Ramirez
Greg Gardner
Jim Gardner
Ilene and Howard Gavenman
Dr. George and
 Marcia Gemmingen
Ginger Gherardi
Judi Gill
Leyland Gillibrand
Tina Gorelik
John and Judi Gould
Julie Grant
James Graves
John and Carolyn Gray
Friday Gretchen and
 John Treur (S)
Carol Griffin
Cindy Gstettenbauer
M. Laura Gulovsen
Jimmie and Patricia Guzik

Karin and Joshua Haggmark
Pickens Halt
Douglas Halter and Randy Encinas
Patricia Halverson-Henas
Donna Hamer
Jaclyn Hamer
Susan Hancock
Tracy Hanna
John Hansen
Dan and Sue Harding
William and Diane Harkins
Margaret Harris
Lennie Harris
Ruth Hartman
Luisa Haskell
Jon and Jennifer Hauss
Patricia Havens
Angela Heald (DVC)
Angie Hecht
Jean Hefter and Dana Park (V)
Julie Henszey
Kim Herren
Sasha Heslip
John and Laurel Hewson (DVC)
Bill and Pam Hicks
Barbara Hill
Robert Hindle
Lynnae Hitchcock
Linda Hitt
Kathleen C. Hobson
Karen Hoffberg
Margaret Holanov
Mike and Annie Hollins
Lisa and Darin Hornbaker
Silvia Huerta-Wetherbee
Michael and Laurie Hurst
Ann Huston
Eric Hvolboll
John and Roberta Hydar
Zella and Hernan Ibanez
Rosemary Icardo
Maryanne Irving
Nancy Israel
Martha Jaffe
Tony Jankowski
Janette Jauregui
Si and Karen Jenkins
Tammy Jensen
David and Tina Johnson
Stanley and Judith Johnson
Helen Johnson and
 Michael Harrison
Lynn Johnson
John Johnson
Gail Johnston
Thomas and Rose Ann Jones
Jim Jordan
Mady Julian
Joanne Julian

Kathy Julian
Susan Kaplan
Joanne Kaplan
Debbie Kaskus
Dan and Michelle Katz
Teri and Bob Keenan
Richard and Donna Keister
Kris and Meenal Kelkar
Richard and Elaine Keller
Nancy Kellogg
Patty Kennedy
Janet Kessler
Taras and Lily Kiceniuk
Andria Kidd
Ann Kidson
Ruth Kilday
Norman and Jo Kirk
James Kirkpatrick
Karen Kitchel
Lynne and Robert Klamser
Eric and Dolly Knight (S)
Linda Knight
Derek and Sawsan Knobel
Betty Knowles
Gerd Koch
Sonia Kroth
Thomas Kutrosky
Elyse Kutz
Marvin Kwit
Gervase Kyle
Ed and Susan Lacey
Robin Lamar (DVC)
Susanne Lammot, MD
Kate Larsen
Donald Latham
Matt LaVere
Sheila and Herbert Lazarus
Joseph Legacy and Joe D. Legacy
Fredda Leiter
Constance Leshin
Craig and Karen Lewis
Lou and Kay Liddi
Janet Lincoln
Pat Lindley
Pamela Lindsay
Marsha Lisak
Victoria Lloyd
Patrick Lloyd-Butler
Vivian Lockard
Gloria Lockwood
Geoff and Nancy Loman
Joyce Lombard
Tracy Long
Dennis and Jeanette Longwill
Robert Lopez
Los Angeles Public Library
Pat Lowthorp
Andrew Ludlum (DVC)
Sherry Lyons

MUSEUM OF VENTURA COUNTY
Thank You To Our Supporters

Mr. C.B. Magallanes
Victor and Carmen Magana
Patricia Maki
Kaye Mand
Kathleen and Keith Manion
Lawrence Manson and Delia Gorey
Steve Marella
Carol Marsh
Jo Marsh
Rev. John Martin
Nancy Martin
Paul and Grace Martinez
John and Linda Martinez
Rosemary and Don Martino
Steve Mason
Richard Masters
Judith Masterson
Patricia Masterson (DVC)
Janet and Richard Maulhardt, Jr.
Frank and Charaline Maxim
Emma Mayer
Sharon McAlexander
Lois McCampbell
Sheila McCarthy Gourley
Sally McCormick
Pat McCormick
Thomas and Janice McCormick
Erendira McCormick and
Angelina McCormick-Soli
Suzanne McGee
Katy McGinnis
Johanna McIntosh
Jonell McLain
Nancy McMillan
Carol McMullin
Susan Measures
Carol Mechanick
Beth and James Medina
Mary Meeker
Jim and Kitty Merrill
Cathy and Gary Metelak
Tsvein Mikkelsen
Sherwood Milleman
Philip Miller
Gerald and Ana Miller
Donna Miller
Patricia Miller
Judy Miller
Shirley Milligan
Rosemary Molloy
Ines Monguio
Frances Monroe and Bruce Hardy
Curt and Jane Montague
Lelia Montemorra
Suz Montgomery
Elizabeth and David Montoya
Sherman Moore
Diane Moore and Lyn Utsunomiya
Moorpark College Library
I. Morales

Rita Moran
Michael Moreau and Florence Yau
Theodora and Jerrold Morris (DVC)
Kathleen Morris
Pamela Mortensen
Shaun Mueller
Jeanette Mueller
Vivian Mullett
Donita Mullins
Dr. Maria Munguia
Cliona Murphy
Michael Musser and Cindy Mulhollen
Nan and Hal Nachenberg
Trina Nagele
Sally Narkevic
Steven Nasker and Charlotte Stone
John and Jessica Nava
Norman and Naz Nebroski
William and Carolyn Neel
Paul Newman and Teresa Savi
Richard Newsham
John Nichols
John andCarolynn Nicholson
Jean Nickel
William and Patricia Niederst
C. Martin Noren
Marta Norkin
Michelle Nosco
Patricia Novak
Margaret November
William and Linda Nugent
Merle and Pat Oberg (DVC)
Rose-Lise Obetz
Michael O'Daniel and Joanne Zivich
Eileen Ogle
Jeff Ohlfs
Leon Older
Gerald and Joan Olsen
Helga Ono
Joan O'Reilly
Bob Becci Orlando
Carrie Palmquist
Susan Part
Paypal Charitable Giving Fund
Jones Pence
Rain Perry
Michael Peterson
Lynne Peterson
Jane Peterson
David Petit
Mike Pettit
Melinda Pettit
Dorothea Phelan
Gary and Jean Phillips
Fred Phipps
Gail Pidduck
Emperatriz Pinedo and Sabelle Rapson
Bill and Michelle Piotrowski
Ann Polise

Paula Poll
Stephanie Pope
Scott and Ginny Powell
Rick Power
Paul and Pauline Powers
Peggy Pownall
Roanna Prell
Kathryn and Lee Price
Chris Provenzano-Chernof and
Dr. David Chernof
Jeanne Pruitt (DVC)
Michael Pulido and Van Pftzing
Nancy Quam
Sandra and Douglas Quick
Marieanne Quiroz
Moises Ramirez and Maria Zapata
Pascual and Sylvia Ramirez
Marianne Ratcliff
Pat and Susana Reeder
Dick and Martha Richardson
Mark and Eleanor Richman
Road Scholar
George Roberts
Don Rodrigues
Ronald Rodriguez
Andrea Rodriguez
Donna Roff
Betty Roina
Helen Rolls
Paul and Judith Rood
Anne Roundy-Harter
Beverly Russell
Judith Russo
Dawn Russum
Mary Rydberg
Cynthia Saenz and Wilson Hago
Janet Sager-Knott
Zaki and Ann Salahuddin
George Sandoval
Daniel Sandoval
Karen Savitt
Robert and Alison Sawyer
Camille Schaetzel
Mary Lou Schill
David and Janis Schmutte
Carl and Anna Schorsch
Ruth Schwartz
Gary Schwartz
Alan and Jean Scott
Mary Scott
Susan Scott
Gary and Dianne Seacord
Kevin Seelos
Edward and Linda Selby
Mohammed Seraj
Terry Shain
Shirley Shanahan
Tom and Judy Shaw
Stephen and Jana Shaw
Rick and Joyce Sherwood

Sondra Short
Frank and Nancy Sieh
Madeleine Sifantus
Simi Valley Public Library
Robert and JoAnne Simmons
Elizabeth Simpson
Marianne Slaughter and Dee Press
Robert and Frances Smith
Michele Smith
Tim Snowber and Robin Wallace
Robert and Kathryn Soares
Andy Sobel and Anne Stehly
Lisa and Chris Soldo
Suzanne Soprano and
Joaquin De Los Santos (S)
Carol Spector
Bill Spicer and Lynda Gruber
Jane Spiller
Charles and Linda Spink
Carol Spinner and Charlene Digman
Patrick and Suzanne Squires
Sara Stauffer
John Stauffer
Beth and Garry Steele
Peter Stefany
Lori Steinhauer
Karilyn Steward (DVC)
Robert Stewart
Fran Stewart
Joanne Stone
Virginia Stout
Harrison Stroud
Michael Stump
Jeri and Bill Sutherland
Renee Sutton
Sandra and Paul Swanson
Alice Sweetland
Laura Swenson
Rebecca Swift
Kerry Swift
Melvyn and Judith Swope
Susan and Rob Talmadge
Michael Tapia
Ben Tapia
Carmen Taylor
Cynthia Taylor
Arline Tepper-Trister
Maria Teran
Greg and Debra Thayer
Jeanne Thompson
Janice Tieken
Kaarina Tienhaara
Jennifer Tomaneng
Cassandra Tondro
Sandi and Bob Tovias (DVC)
Mary Travis
Caroline Tupper
Thomas and Kathleen Turner
Marcia Turner

Donna Turner
Mark and Lysa Urban
Steve Vacca
Ana Maria Valle Villa
Robert Valles
Steve Van Denburgh
Janet Van Duinwyk
Carole Van Orsdol (V)
Wendy Vanhorn
Roberto Vargas
Yvonne Vargas
Edward Vasquez
Ventura College Library
Doreen Villanueva
Jeanette Villanueva
Blanca Villasenor-Russo
Rev. Audrey and Richard Vincent
Mary Vomund
Diane Von Heyneman
Thomas and Jane Vujovich
Roger and Kathy Wachtell
Jeana Wacker
Joshua and Anita Wagner
Charlean Wakefield
Donald Walker
Lee and Christine Wan
Robert Warner and Isabel Downs
Katherine Warner and Pete Dibble
Leslie Warren
Hal Wasserman
Maggie Watson (DVC)
Timothy and Leslie Wawrzeniak
Rauleen Weckworth
Jo Ann Wedding
Marie Weed
Paula and Marvin Wegner
John Weigle
David and Tina Weinstein
Irving and Natalie Weinstein
Barbara Weiss
Robert and Sheila Wenzel
Patricia West
Susan Westbrook
Yvonne Westervelt
Gary Wetzel and Shirley D. Vivion
Trish Whalen
Estrella Whaley
Dotty Wheeler (DVC)
Richard Wheelock
Elynor Whitaker
Eliane and Rick White
Frederick White
Paul Whitehead
Jim and Janette Whitney
Richard Wibbelmann
Connie Wiens
Kathryn Wilbur
Shelah Wilgus
Linda and Norman Wilkinson

Germaine Williams
John Williams
Mel and Danielle Willis
Teri Willison
Darrel Wilson
Rikke Wilson
Linda Windsor
Pat Wise
Ed and Gail Wohlenberg
Cheri Wolfe
Sandra Wolfe
Bill Wong
Peter Wood and Wendy Gayner (DVC)
Deborah Wooden
Roberta Woods
Jackie Worden
Marie Wren
Debbie and Steve Wright
Melissa Yalinkatian
Casha Yellin
Russell and Paula Yermasek
Jean Yeto
Zeke and Irma Zahid
Kay Zetmaier
Wade Zimmerman
Valerie Zwirn

IN-KIND

Agromin
Axxess Ventura
Beach House Fish
Beach House Tacos
Cajun Kitchen Cafe
Chicago Architecture Center
Eight O Five Detail Shop
Fast Signs
For Your Home Furniture
Garman's Irish Pub
Hathaway Dream Vacations
La Cabana Restaurant
Li Mor Cakes
Marie Callendar's Restaurant
Miner's Ace Hardware
Oakmont of Riverpark
Palmer House - a Hilton Hotel
Passion Flowers
Pizza Man Dan's
Rabalais Bistro
Reves de Sabine
RP Equipment and Tool Rentals
Santa Paula Materials
Snapper Jack's Taco Shack
Swift Chip
Topa Mountain Winery
Trader Joe's
Vom Fass Ventura
Yolanda's Mexican Cafe

MUSEUM OF VENTURA COUNTY TRIBUTE DONATIONS

CONSIDER A TRIBUTE DONATION

In Honor Of

Celebrate birthdays, anniversaries, and other special events with an honorarium gift to the Museum as a tribute to your loved one.

In Memory Of

Create a legacy or express sympathy by commemorating a loved one with a memorial gift to the Museum—a personal remembrance that honors a deceased friend, relative, or colleague in a very meaningful way.

To make a donation, please call the Development Department at (805) 653-0323 ext. 330 or email sgordon@venturamuseum.org.

While tribute donations may be made in any amount, a \$1,000 gift in honor or memory of someone is recognized with installation of a commemorative tile that will remain outside the Museum for years to come.



IN HONOR OF:

Penny Barns

Lydia and Tommy Hopps

Citizen of the Year Recipient

—Elena Brokaw

Barbara Meister

Hardison, Kimball, and

Thille Families

Dorcas Thille

Ariane Karakalos

Kathleen Sisson

Andy Meyer

Anonymous

Dr. and Mrs. P. Schofield

Lydia and Tommy Hopps

Mayor's Awards Arts Leader

Recipient—Denise Sindelar

Elena Brokaw and Pat Miller

Ventura City Firefighters

California Oaks Property
Management

Thomas and Esther Wachtell

Mimi and Philip Allin
Dr. and Mrs. Albert Amorteguy
Casey Appel and Tracy Albert
Everard and Brooke Ashworth
Allan and Jyl Atmore
Don and Deborah Barker

Barney and Kate Barnhart

James and Carolyn Bennett

Supervisor Steve Bennett

James and JJ Birkenshaw

Diana Boydston

Elena Brokaw and Pat Miller

Mr. and Mrs. Robert Brown

Claire Carty

Suzanne Chadwick

Betsy Chess

Charles and Eloise Cohen

Community Memorial Health System

CSU Channel Islands Foundation

Mr. and Mrs. Milton Daily

Lucinda Daley

Mrs. Marcia Donlon

Bobbi and Donald Dufau

Linda and John Edison

Edward and Frances Elson

Finch Family Foundation

Richard and Mary Gallagher

Nancy and Spencer Garrett

Rod Gilbert

John and Margaret Given

Carolyn Hertel

Lydia and Tommy Hopps

Lawrence Janss

David and Tina Johnson

William and Elise Kearney

Joan Kemper

Jim and Sue King

Thomas and Cathryn Krause

Carol Lamb

Anita and Haady Lashkari

Thomas and Barbara Laubacher

Leslie Leavens

Debra McKillop

Kate McLean and Steve Stone

Mechanics Bank

Barbara Meister

Margaret and George Melton

Gretchen and Marshall Milligan

James Monahan and Glenda Cardona

Montecito Bank & Trust

Judith Munzig

Gary and Vicki Nichols

Ann Oppenheimer

John and Stephanie Orr

Maria Ortiz

Tom and Karen Pecht

Laura Peck

Susan Petty

Andrea Pfister

Ron and Linda Phillips
Pierpont Racquet Club
Judi and Ron Polito
Bruno and Victoria Pozzi
Elaine and Larry Rasmussen
Lois Rice
Brian and Judy Robertson
Richard and Jane Rush
Richard Pidduck
Don and Ann Scanlin
David Schwabauer and
Michael McMahan
Mike Sedell
Bill and Jill Shanbrom
Michael and Mary Shore
Rebecca and Jeffrey Smith
Martha Spriggs
Tony and Anne Thacher
Dorcas Thille
University of Southern California-
The Center on Philanthropy and
Public Policy
Ventura College Foundation
Ventura County Community Foundation
Ventura County Credit Union
Ventura Rental Party Center
Wendy Wachtell
Jonathan and Monica White
Janice Willis
Hiroko Yoshimoto
Whitten and Sally Yount

Alberta Word's Birthday

Carol and Larry Dawes

IN MEMORY OF:

Neal Andrews

William and Elise Kearney

Henry "Bud" Brigham

William and Elise Kearney

Dr. William Burger

Rosena McConica

John Buzzell

Edward Russell

John B. Colla

Michelle and Jim Butterbaugh
Susan and Robert Colla
Gale Shoemaker
Leah Willis
Kathleen Zahniser

Alfred V. Contarino

Andrea Contarino
Freddie Contarino

Dr. Priscilla Patridge De Garcia

William and Elise Kearney

David J. Donlon

The Donlon Family

Philip Drescher

Michelle and Jim Butterbaugh
Suzanne Chadwick
William and Elise Kearney

Rosena McConica
Mr. and Mrs. John Menne

Loretta DuBois

Barbara Dupree
Joyce and Bruce Schoppe
Sylvia and Duane Wikholm

Lorraine H. Finch

Elena Brokaw and Pat Miller
Craig and Denise Held
Mark and Carri Jacobs
William and Elise Kearney
Walter Marriott Jr. and Peggy Guinn
John and Gayley McConica
Richard Pidduck
Allan Pinkerton Family
Dorcas Thille
Thomas and Esther Wachtell

Edward Friel, Jr.

Dolores Borchard and Family
Farm Credit West
Walter McKinny
Betty Swift and Family

Don Gloisten

William and Elise Kearney

William M. Grant

Dorcas Thille

Anne Graumlich

Lynn Goldsbrough
David Shilton
Kathleen Sisson

Gerry Hair

Mr. and Mrs. Robert Brown
John and Stephanie Orr

Charles "Chuck" Hair

William and Elise Kearney

David W. Hill

Kay Hill

Edith Hobson Hoffman

Andrea Pfister

Carolyn Huntsinger

John and Stephanie Orr
William and Elise Kearney

Nancy Kropf

Jeanne Hunt

Lawrence T. Lindgren

Dr. and Mrs. Amir Biniaz
Mark Boogren
William and Joanne Bowie
Elena Brokaw and Pat Miller
Mr. and Mrs. Robert Brown
Camille Crawford
Paul and Joann Dwork
Carol Eller
Tom and Joan Faragher
Jim and Kelle Green
Michael and Beverly Grojean
Craig and Denise Held
Dave and Kathy Henri
Marilyn Renee Johnson

William and Elise Kearney
Suzanne Kitchens
Walter Marriott, Jr. and Peggy Guinn
Laura McAvoy and Sol Chooljian
John and Gayley McConica
Neale and Sue McNutt
David and Margaret Noble
John and Stephanie Orr
Susan Peterson
Fred Phipps
Richard Pidduck
Robert and Norma Rich
Betty Roina
Edward Russell
James and Faith Stevens
Dorcas Thille
Jeanne Thompson
Craig and Sara Jane Underwood

Maxine Lindsay

Jane Pidduck

Ambrose Little

Roz McGrath

Robert Mahan

Susan Peterson
Edward Russell

Anna Mary Naumann

Family of Helen Pidduck

Jon Peterson

Edward Russell

Roxy Ray

William and Elise Kearney

Frank Sandall

William and Elise Kearney

George Short

Gerry Browning
Linda Hadlen
Kathleen Sisson
Ventura Unified School District
Retirees' Committee
Sylvia and Duane Wikholm

Raymond E. Swift

Betty Swift and Family

George Tillquist

William and Elise Kearney

Fred Ulery

Edward Russell

Hilda Warren

William and Elise Kearney

Guy Webster

William and Elise Kearney

James W. Williams III

Oxnard Lemon Company
Richard Pidduck

William and Eileen Workman

Lynn Ross

MUSEUM OF VENTURA COUNTY

2020/2021 EXHIBITS

MUSEUM OF VENTURA COUNTY IN VENTURA

HUNTSINGER GALLERY A:

March 6, 2020 – April 26, 2020

Legacy: Seven Decades of Ventura College Art

May 7, 2020 – June 7, 2020

Ventura Unified School District:
All Student Show

June 20, 2020 – September 27, 2020

A Ticket to Ride: How Transportation
Transformed Ventura County

October 9, 2020 – January 31, 2021

Margaret Garcia: Arte Para La Gente

HOFFMAN GALLERY:

May 7, 2020 – September 27, 2020

Crossing Borders: Immigrant
Artists in Ventura County

October 9, 2020 – January 31, 2021

Beyond the Studio: Plein Air Painters
of Ventura and Los Angeles

HUNTSINGER GALLERY B:

March 14, 2020 – April 26, 2020

Huelga! Photographs from the
Frontlines by Jorge Corralejo

October 9, 2020 – January 31, 2021

Mural, Mural, on the Wall:
The Legacy of Millard Sheets

COMMUNITY GALLERY:

May 1, 2020 – July 1, 2020

I Count!: Census 2020 in Ventura County

SMITH GALLERY:

March 6, 2020 – June 15, 2020

Nordic Myths and Legends: George
Stuart Historical Figures®

July 2, 2020 – October 11, 2020

American Revolution! George Stuart
Historical Figures®

October 16, 2020 – January 17, 2021

Curiouser and Curiouser: Mounted
Oddities from the Collection

MARTIN V. AND MARTHA K.

SMITH PAVILION:

January 25, 2020 – February 22, 2020

Buenaventura Art Association Open Competition

February 29, 2020 – April 11, 2020

Ojai Studio Artists: Mending the Divide

April 24, 2020 – May 24, 2020

Focus on the Masters: Learning to See

AGRICULTURE MUSEUM IN SANTA PAULA

LIMONEIRA HALL

June 1, 2020 – June 1, 2021

A Ticket to Ride: How Transportation
Transformed Ventura County

FINCH GALLERY

January 24, 2020 – March 7, 2020

Patterns on the Land

March 14, 2020 – August 2, 2020

Huelga! Photographs from the
Frontlines by Jorge Corralejo

August 15, 2020 – January 18, 2021

Agricultural Art from the Permanent Collection

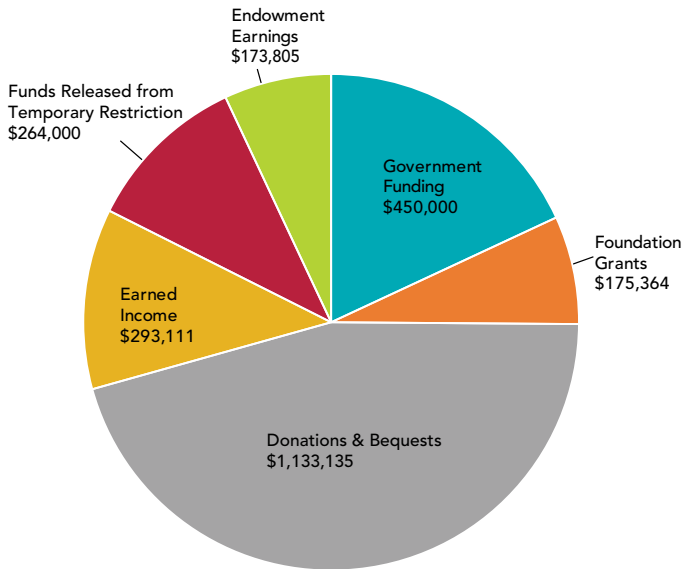
CALAVO HALL EDUCATION GALLERY

August 2020 – August 2021

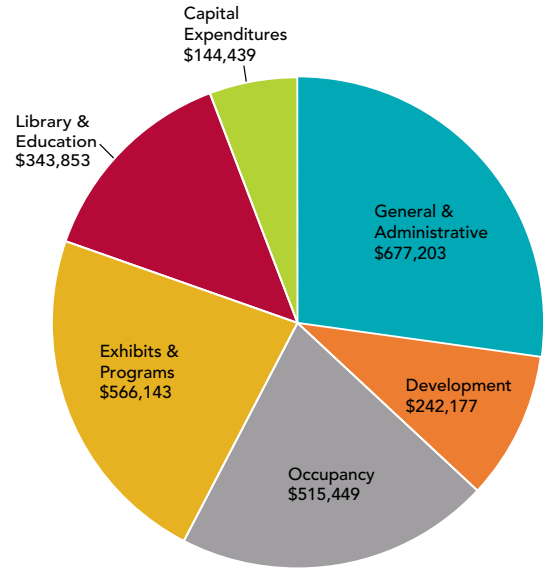
Farmer's Almanac – Forecast for the Future

MUSEUM OF VENTURA COUNTY 2019 FINANCIALS

INCOME \$2,489,415



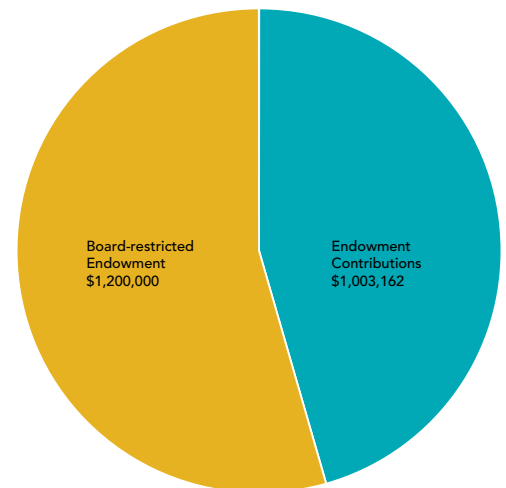
EXPENSES \$2,489,264



This financial information is prepared internally and is subject to audit adjustment.

The audited financial statements for the year ended June 30, 2019 will be posted on the Museum's website when issued by the Board of Directors.

ENDOWMENT \$2,203,162



INCREASING FINANCIAL SUSTAINABILITY

MVC has adopted a five-year strategic plan built on six pillars:

- Relevant programs
- Robust partnerships
- Compelling vision
- Accessible collections
- Transparent governance
- Sustainable funding

Without consistent and reliable funding, the Museum cannot achieve its goals. We are pleased to report that because of your help, we are on our way toward financial sustainability.

MVC's focus over the last two years has been to bolster its endowment, increase earned revenue from admissions, store sales, venue rental, etc., and create prudent reserves. We have had initial success in all these arenas, but we still have much to achieve toward our goals, which are to earn 20 percent of our revenues from endowment earnings, 20 percent from earned income, and have reserves equal to three months of operating costs.

The success we have achieved thus far would not have been possible without the continued support of our government partners, Ventura County and the City of Ventura. Both have pledged multi-year grants that enable MVC to forge forward by stabilizing operations and by delivering stellar programs and services. On behalf of the entire Ventura County community, we are grateful for this vital support.

VOLUNTEERS—THE HEART OF OUR MUSEUM!

MAKE A DIFFERENCE AND VOLUNTEER AT YOUR MUSEUM



MVC has a vibrant staff and volunteer culture, with a range of volunteer opportunities from which to choose. When you decide to join the volunteer team at MVC, there are options in Visitor Services, the Research Library and Archives, Event Services, Administrative Support, Education Tours, MVC Ambassadorship, and our Docent program.

To apply for a volunteer position online, visit www.VenturaMuseum.org.

Museum volunteers gain satisfaction out of doing something unique in giving back to our community. Our volunteers support the preservation of Ventura County heritage and continue learning about our County's history and art through service and research.

We give our heartfelt thanks to all of the dedicated loyal docents and volunteers who make the Museum what it is today; without them we could not exist. For 45 years, the docents and volunteers have supported the Museum's goals of preservation through library archiving, educational tours, exhibits, and engaging with the community. Because of their efforts we better celebrate our history and educate our community. These goals are part of the Museum's plan to maintain our importance in history and our community, gain membership and make sure everyone who comes to the museum leaves feeling enriched by their experience. We need volunteers to continue reaching our goals.

*"You will get satisfaction out of doing something to give back to your community that you never get in any other way."
—Ruth Bader Ginsburg*

The Museum is a place where families, schools and community come together to celebrate art, music, lectures, film and to have fun. Our volunteers make this possible. The Museum thanks everyone who has given their time to volunteer. We wouldn't be where we are today without their service!

Liisa Pynnonen, Volunteer Coordinator
lpynnonen@venturamuseum.org
(805) 653-0323 Ext. 310

MUSEUM of VENTURA COUNTY

2019 MUSEUM COMMITTEES

COMMITTEES OF THE BOARD

Audit ensures that the Museum's financial systems are audited regularly by a qualified entity so that they are accurate and meet professional standards.

Development oversees fundraising activities to ensure that the Museum has the financial resources to reach and support its mission and annual programs.

Finance and Investment ensures that the Museum acts as a responsible steward in managing its financial resources to accomplish its mission in an effective and efficient manner. It ensures that the Museum adheres to all legal requirements and accounting principles to ensure fiscal responsibility and build public trust.

Governance reviews the Museum's leadership and management infrastructure and refines the policies, procedures and legal documents that support best practices for nonprofit organizations. It ensures that MVC moves into the future with the strongest building blocks.

ADVISORY COMMITTEES

Accessions considers potential collection and deaccession of history-related materials.

Agriculture Advisory and Farm Implements advises on the operation of the Agriculture Museum and provides for the development and maintenance of the farm implement collection.

Docent Volunteer Council provides volunteer support to library operations, school tours, curatorial efforts, and exhibition preparation and construction.

Endowment creates a strong and stable base of continued financial support for the Museum through increasing endowment funds.

Fine Arts promotes interest, appreciation, education and research in art through exhibits, collection, conservation and preservation of the Museum's fine and decorative arts collection.

Innovation explores opportunities for audience expansion through the development of new programming, diverse exhibits, expanded education programs and the Museum's use of technology.

Latino Advisory advises the Museum on programs and exhibits that reflect and involve Latino and Chicano culture and history.



The Museum of Ventura County appointed three new members to its Board of Directors in July 2019.

Jessica Arciniega – Oxnard

Formerly an associate at Wasserman, Comden, Casselman and Esenten, LLP, Jessica has now been assistant general counsel at the Agricultural Labor Relations Board since 2012. Jessica is also formerly a Board member of MICOP, the Mixteco Indígena Community Organizing Project.

David Fukutomi – Camarillo

David is a prominent government and private sector consultant specializing in security and emergency management. His government service has included stints with the Federal Emergency Management Agency, the U.S. Department of Homeland Security and the California Governor's Office of Emergency Services. He has served as a consultant to various government agencies including the U.S. Department of Defense, U.S. Department of Veterans Affairs and State of California.

Tom Pecht – Oxnard

Tom is the co-owner and operator of Pecht Ranch, a family business that grows avocados and citrus. He is part of a multi-generational County family. Tom is involved with numerous other regional nonprofits. He serves on the Board of Directors for Livingston Memorial Visiting Nurse Association and the Leadership Advisory Council for Interface Children & Family Services.

A MESSAGE FROM THE BOARD CHAIR



BOARD OF DIRECTORS 2019—2020

Kate McLean, Chair
Westlake Village

William Kearney, Vice Chair
Ventura

Mike Sedell, Treasurer
Simi Valley

Al Lowe, Secretary
Camarillo

Jessica Arciniega, *Oxnard*

Yissel Barajas, *Camarillo*

Betsy Chess, *Ventura*

David Fukutomi, *Camarillo*

Leslie Leavens, *Ojai*

Tom Pecht, *Oxnard*

Richard Rush, *Camarillo*

Jim Scanlon, *Santa Rosa Valley*

Peter Zierhut, *Camarillo*

What an exciting year! As you learned in earlier pages, among the many positive happenings that the Museum had this past year, was the unexpected receipt of two generous estate gifts that came at a key time. The Main Street and Santa Paula Museums were suffering from significant deferred maintenance—the roof on the Main Street Museum needed replacement at a cost of \$105,000, and we had no funds in the budget for it. These estate gifts made the roof possible. Over the years, I have found that estate gifts come at the perfect time, and the time to plan for these types of gifts is now.

Planned gifts or bequests can be as simple as including the Museum in your estate plans by naming the Museum as a beneficiary in your will, a life insurance policy, a charitable trust or annuity, or other deferred gift opportunity. *These types of gifts are a significant resource for the strength, growth and sustainability of the Museum, ensuring that our treasured history will continue.*

In the early 2000s, the Museum developed a program to encourage and recognize those visionary community members who remember the Museum in their estate planning. The program, The Edith Hobson Hoffman Society, is named for Edith's long legacy of generosity and community-minded spirit and provides special benefits to its members, which include anyone who specifies a planned gift to the Museum.

Our Museum friends who have included planned gifts/benefits inspire confidence in the Museum's mission and empower our community to pursue the ideas and dreams that move our Museum forward. Additionally, gifts to our endowment fortify the Museum's overall health, sustaining it as it continues to evolve and expand.

We are truly grateful to all who have generously included the Museum in their estate plans and hope that our work is inspiring even more people to include the Museum in their planning.

Kate McLean
Board Chair

BUSINESS CLUB & SPONSORSHIP INFORMATION



BUSINESS CLUB

In 2019, business leaders from around Ventura County came together with the Museum to create the Business Club. Ranging from small businesses to global, publicly traded corporations, these members are actively stewarding the Museum’s mission and vision.

For more information, please contact Development Director Eric Knight at eknight@venturamuseum.org.

- Aera Energy
- California Oaks Property Management
- California Resources Corporation
- E.J. Harrison & Sons Corporation
- Haas Automation
- Leavens Ranches
- Limoneira
- Pierpont Racquet Club
- TOLD Corporation
- Ventura County Credit Union

SPONSORSHIPS

The Museum of Ventura County relies on sponsorships to present our exhibits, programs, and more. MVC offers sponsor opportunities for any size business, from \$500 to \$10,000 and above.

For more information, please contact Development Director Eric Knight at eknight@venturamuseum.org.

Sponsor opportunities include:

- Free First Sundays
- Exhibit Openings
- Panel Discussions
- Special Events
- Exhibits
- Lectures
- Music Series
- Custom Opportunities

BOARD AND STAFF ACHIEVEMENTS

Many MVC Board members and staff were recognized for accomplishments in 2019:

Anna Bermudez, Chief Curator, was selected to collaborate with the Smithsonian Latino Center on a 2021 exhibit at the Smithsonian Latin American History Museum.

Elena Brokaw, The Barbara Barnard Smith Executive Director, was one of the Pacific Coast Business Times’ Top 50 Women in Business, voted Citizen of the Year by the Ventura Chamber of Commerce, and named as one of the top 50 most influential people in the tri-county region by the Pacific Coast Business Times.

Kate McLean, Board Chair, was the inaugural recipient of the Kate McLean Award for Exemplary Leadership, awarded by the Center for Nonprofit Leadership at California Lutheran University.

Tom Pecht, Board Member, with his wife Karen, was recognized by the Association of Fundraising Professionals as Philanthropist of the Year.

Dick Rush, Board Member, was named as one of the top 50 most influential people in the tri-county region by the Pacific Coast Business Times.

Denise Sindelar, Deputy Director, was voted Arts Leader by Mayor Matt LaVere in the Ventura Mayor’s Arts Awards.

Major funding for these programs is made possible by the City of San Buenaventura, the County of Ventura, and private and community donors.



MUSEUM OF VENTURA COUNTY

100 East Main Street
Ventura, CA 93001
Phone: 805.653.0323



THE AGRICULTURE MUSEUM

926 Railroad Avenue
Santa Paula, CA 93060
Phone: 805.525.3100